



WENDY'S COMBO RANGE

model **STW286A**

PARTS LIST

Toll Free Phone, (US & Canada): (800) 427-6668

Toll Free Fax, (US & Canada): (800) 361-7745

<http://www.Garland-Group.com>



WENDY'S COMBO RANGE

model **STW286A**

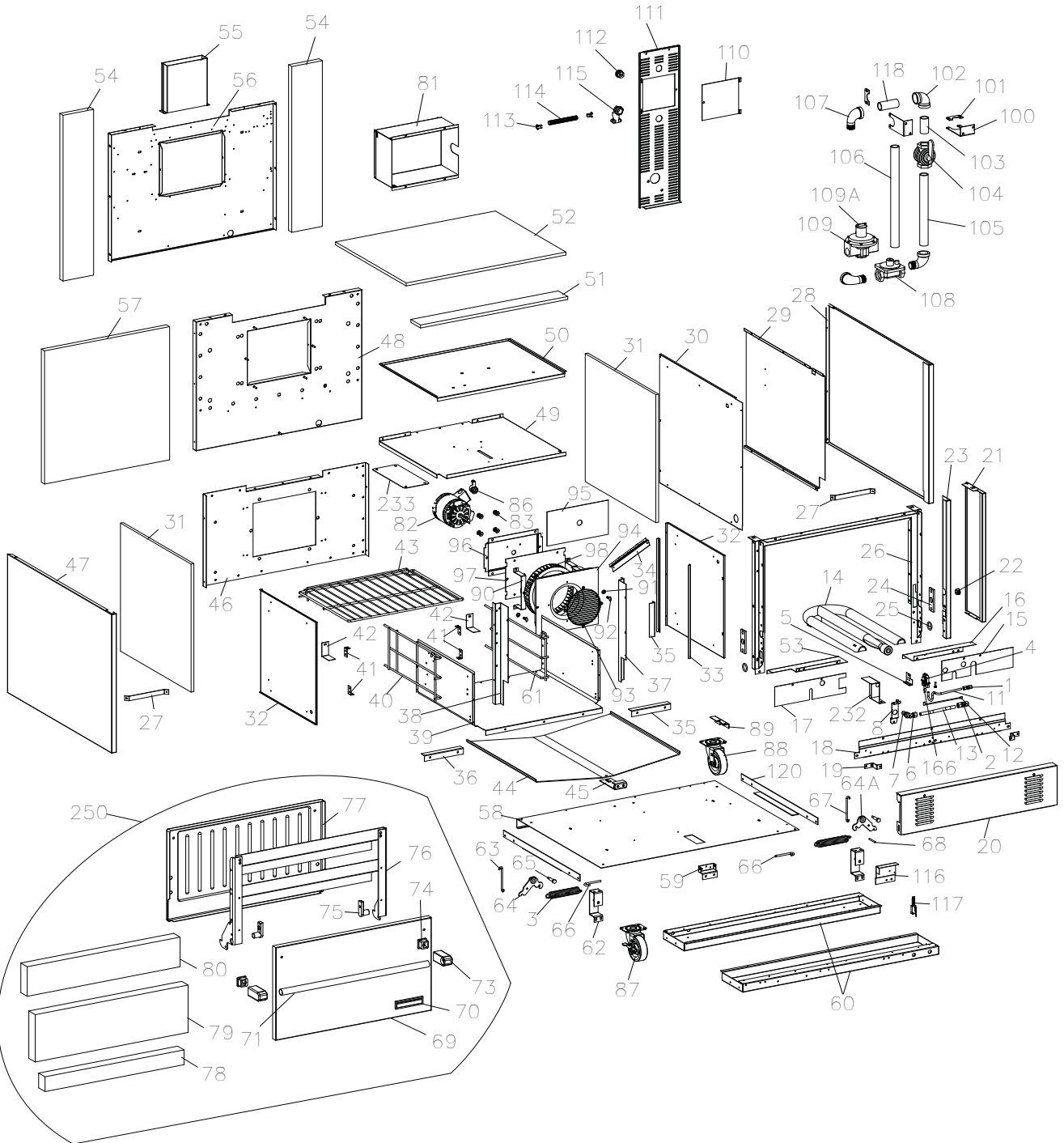
Contents

Wendy's Combo Range Components (Part 1)	4
Wendy's Combo Range Components (Part 2)	8
Related Bulletins	12
Revision History	13



NOTE: Information on the First Unit Manufactured

date **June 16, 2005**
model **STW286A-0002**
serial# **0506100124006**



GARLAND PARTS IDENTIFICATION
WENDY'S COMBO RANGE model STW286A
COMPONENTS

ITEM	PART #	DESCRIPTION	QTY	CRITICAL
1	076050-87	¼ Compression Union	1	
2	076050-88	7/16 Compression Union	1	
3	1005800	Door Spring	2	C
4	2206513	Oven Spark Ignition Pilot NAT	1	C
	2206512	Oven Spark Ignition Pilot PRO	1	C
5	4518183	Pilot Bracket, Oven	1	
6	22701XX	Oven Orifice Fitting	3	
7	M9-XX	Oven Orifice Hood (Specify Gas)	1	
8	2635100	Oven Orifice Support Bracket	1	
11	2624900	Tube ¼ - Oven Pilot to ¼ Compression Union	1	
12	2642800	Sensor Wire	3	C
13	2624800	Tube 7/16 - 7/16 Oven Orifice to Compression Union	1	
14	4518182	Oven Burner	1	
15	1390702	RH Roll Out Shield	1	
16	1391100	Roll Out Shield Support	1	
17	4518184	LH Roll Out Shield	1	
18	2512700	Lower Front Plate	1	
19	2628699	Kick Panel Bracket	2	
20	4517059	Kick Panel	1	
21	2622200	Front Support	1	
22	G01487-8	Heyco Bushing	1	
23	2604400	RH Door Filler	1	
24	1083001	Trunion Support	2	
25	1082700	Harness Ring	2	
26	1730296	Front Frame Assy	1	
27	2621300	Body Side Support	2	
28	2614100	Body Side R/H	1	
29	2642000	Wall Shield	1	
30	2604200	Inner Liner	1	
31	4527368	Insulation - 1/2" with foil	2	
32	3020000	Side Insulation Pan	2	
33	3019900	Flue Spacer Angle	6	
34	G02905-01-8E	Capillary Guard Assy	1	
35	1402400	Casing Support Angle	4	
37	1411302	Casing Support RH	1	
38	1411303	Casing Support LH	1	
39	3019701	Casing Bottom	1	
40	1311100	Rack Guide Assy - LH	1	
41	1356600	Rack Guide Clip	4	
42	1411700	Insulation Support	2	
43	2301200	Oven Rack	2	
	4519087	Divided Oven Rack	1	
44	1357702	Fire Plate	1	
45	1412098	Fire Plate Front Support Bracket Assembly	1	
46	3019601	Casing Back	1	
47	2614101	Body Side LH	1	
48	3014099	Main Back Insulation Pan Assy	1	
49	3019898	Casing Top	1	
50	3020199	Top Insulation Pan Assy	1	

* NOT ILLUSTRATED

RECOMMENDED STOCK PARTS

GARLAND PARTS IDENTIFICATION
WENDY'S COMBO RANGE model STW286A
COMPONENTS

ITEM	PART #	DESCRIPTION	QTY	CRITICAL
51	4527370	Insulation - Oven Cavity Top Front	1	
52	4527369	Insulation - Oven Cavity Top Rear	1	
53	2677600	LH Roll Out Shield Support	1	
54	1472202	Insulation - Oven Cavity Rear Sides	2	
55	2621199	Flue Riser Assy	1	
56	3013900	Main Back	1	
57	1472200	Insulation - Cavity Back	1	
58	2620800	Main Bottom	1	
59	2301300	Door Spring Support	1	
60	2620900	Main Bottom Support Channel	2	
61	1311101	Rack Guide Assy - RH	1	
62	1386100	Bell Crank Support	2	
63	1082803	Oven Door Hinge Link LH	1	
64	1082198	LH Bell Crank	1	
64A	1082199	RH Bell Crank	1	
65	1082200	Bell Crank Bolt	2	
66	9004701	Oven Door Spring Hook	2	
67	1082802	Oven Door Hinge Link RH	1	
68	G01503-16	Weld Stud ¼-20 x 1.75	1	
69	1080723	Oven Door Panel	1	
70	4529724	Garland Nameplate	1	
70A*	F640	Pal Nut for Garland Nameplate	2	
71	3017000	Handle	1	
72	4516836	Cooling Fan Assembly 120V	1	C
	4517669	Cooling Fan Assembly 230V	1	C
73	3007300	Handle End	2	
74	3010000	Handle End Plastic Insert	2	
75	1082500	Oven Door Trunion	2	
76	G03984-06-8	Oven Door Insert Assy	1	
77	1439796	Oven Door Lining	1	
78	1472303	Insulation - Oven Door Interior Lower Section	1	
79	1472301	Insulation - Oven Door Interior Middle Section	1	
80	1472302	Insulation - Oven Door Interior Upper Section	1	
81	2519799	Motor Guard Assy	1	
82	2485801	Motor 115V	1	C
	2485800	Motor 208/240V	1	C
83	G01503-3	Ohio Weld Nut ¼-20	8	
86	G01497-1	BX Connector Straight	2	
87	4519840	Caster, Swivel, Locking	2	
88	4519839	Caster, Swivel	2	
89	1748701	Restraint Attachment Bracket	1	
90	1361299	Air Baffle Support Assy	2	
91	F542	Aluminum Padded Washer	2	
92	F543	Stainless Steel Wing Screw	2	
93	2520100	Fan Protector Screen	1	
94	2395999	Air Baffle Assy	1	
95	1669101	Motor Pocket Insulation Board	1	
96	3013301	Motor Mount Pocket	1	
97	3013401	Motor Mount Plate	1	
98	G02952-01P	Blower Wheel	1	C

* NOT ILLUSTRATED

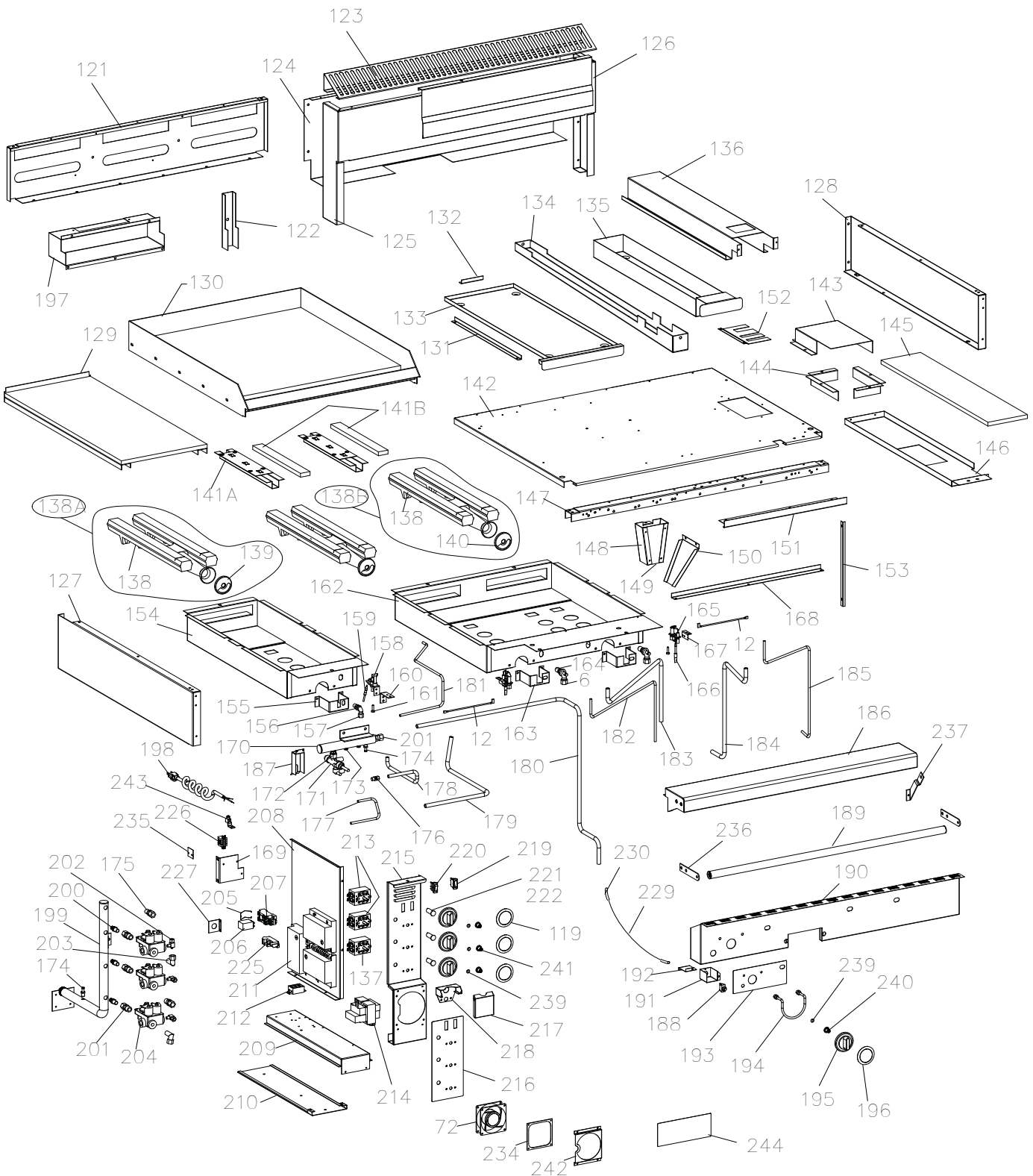
RECOMMENDED STOCK PARTS

GARLAND PARTS IDENTIFICATION
WENDY'S COMBO RANGE model STW286A
COMPONENTS

ITEM	PART #	DESCRIPTION	QTY	CRITICAL
100	2640700	Manifold Support Bracket	2	
101	2640800	Manifold Support Clamp	2	
102	G01474-5	¾" NPT Elbow	1	
103	G01738-14	Nipple 3/4" NPT X 2" (Domestic Model)	1	
104	G01518-1	Valve-Swing Type Shut Off Gas (Domestic Model)	1	
105	G01738-9	Nipple 3/4" NPT X 9.5" (Domestic Model)	1	
106	G01738-13	Nipple 3/4" NPT X 13.5" (Export Model)	1	
107	G01475-2	3/4" NPT 90 Deg. Street Elbow	3	
108	2127502	Gas Regulator (NAT) (Domestic Model)	1	C
	2127500	Gas Regulator (PRO) (Domestic Model)	1	C
109	2525200	Jeavons Regulator (NAT) (Export Model)	1	C
109A	2525300*	Regulator Spring (PRO)	1	
110	2622400	Wiring Access Cover	1	
111	4517369	Control Compartment Back	1	
112	2490500	Straight Thru Relief Bushing (Domestic Model)	1	
113	1029600	Antishorts	2	
114	1029400	3/8" BX Cable	1	
115	1028500	BX Connector - 90 Deg.	2	
116	4517402	Door Switch Bracket/Heat Shield	1	
117	2628000	Door Switch	1	C
117A	3096100*	Door Switch Wiring Harness	1	
118	G01738-4	Nipple 2.5"	1	
119	2621400	Oven/Griddle Dial Insert Fahrenheit	3	
	2621401	Oven/Griddle Dial Insert Celsius	3	
120	2620700	Lifting Angle	2	
121	2615900	Burner Box Back	1	
122	1414600	Burner Box Back Support	1	
123	2374301	Backguard Top 36"	1	
124	2614200	Backguard Back	1	
125	2374101	Backguard Front	1	
126	2629400	Griddle Splash Shield	1	
127	2614398	Burner Box Side Assy LH	1	
128	2614399	Burner Box Side Assy RH	1	
129	2604799	Hot Top Assy	1	
130	4517072	Griddle Assy	1	
131	2616100	Drip Tray Guide	1	
132	2616000	Drip Tray Stop	1	
133	4516888	Drip Tray	1	
134	2618000	Grease Trough	1	
135	4517076	Grease Drawer Assy	1	
136	4516887	Grease Sleeve	1	
137	4517610	Thermostat - Oven	1	C
138	1014900	Cast Iron H-Burner	3	
138A	4525462	Burner Fully Ported w/Shutter Small	1	
138B	4525461	Burner Fully Ported w/Shutter Large	2	
139	1028002	Air Shutter (Hot Top Burner) - Used w/M8 Hoods (item 156)	1	

* NOT ILLUSTRATED

RECOMMENDED STOCK PARTS



SK3894A

GARLAND PARTS IDENTIFICATION
WENDY'S COMBO RANGE model STW286A
COMPONENTS

ITEM	PART #	DESCRIPTION	QTY	CRITICAL
140	2512100	Air Shutter (Griddle Burner) - use with M9 Hoods (item 164 & 7)	2	
141A	4523469	Bulb Clamp Assembly with Insulation (Includes Item 141B) NOTE: Implemented From Date Nov 22, 2007 / Serial# 0711100176562	2	
141B	1472324	Insulation 2" x 16" x 1-1/4" (Bulb not included)	2	
142	2614500	Burner Box Bottom	1	
143	4517373	Heat Shield-Tubing	1	
144	2619400	Insulation Shield	2	
145	2642100	Control Compartment Top Insulation	1	
146	2608100	Insulation Retainer	1	
147	1085000	Burner Box Front Channel 36"	1	
148	4517408	Grease Chute Front	1	
149	4522121	Grease Chute Rear	1	
150	2618100	Grease Deflector	1	
151	4516890	False Handle	1	
152	4516884	Heat Shield - Upper Tubing	1	
153	2615700	Panel Stop	1	
154	2614698	Hot Top Burner Box Assy	1	
155	2617500	Orifice Support Hot Top	1	
156	M8-XX	Orifice Hood - Hot Top (Specify Gas)	1	
157	G02486-00	Orifice Fitting less Hood (Hot Top)	1	
158	2200700	SIT Pilot RH	1	
158A	2200704	3/16" Comp Nut	1	
158B	2200705	Olive Ball Sleeve	1	
158C	2200706	Nut Thermo Retaining	1	
158D	2200707	Nut Electrode	1	C
158E	2200708	Electrode	1	C
159	2200600	18" Thermocouple - Hot Top	1	C
160	2614900	Bracket - Hot Top Pilot	1	
161	2200702	Orifice - Hot Top Pilot #32 (NAT)	1	
	2200703	Orifice - Hot Top Pilot #23 (PRO)	1	
162	4516665	Griddle Burner Box Assy	1	
163	2617400	Orifice Support -Griddle	2	
164	M9-XX	Orifice Hood - Griddle (Specify Gas)	2	
165	2206514	Griddle Spark Ignition Pilot (PRO)	2	C
	2206515	Griddle Spark Ignition Pilot (NAT)	2	C
166	1466100	Flame Sensor	3	C
167	2614800	Griddle Pilot Bracket	2	
168	4517038	Heat Shield - Griddle Burner Box	1	
169	2617000	Main Manifold Retainer Bracket	1	
170	2612399	Sub-Manifold Assembly	1	
171	2200199	Valve (Hot Top)	1	
172	2198102	Valve Connector Fitting 10mm	1	
173	2203400	1/8" NPT Plug	2	
174	G02251-1	Pressure Test Spigot	2	
175	G01243-1	Fitting 68-7B	1	
176	1086597	Gum Valve - 3/16" Pilot	1	
177	4517599	Tube (1/4") - Hot Top Valve to Hot Top Orifice Fitting	1	
178	2625000	Tube (3/16") - Hot Top Valve to Hot Top Pilot	1	
179	2624700	Tube (7/16") -Oven Solenoid Valve to 7/16 Compression Coupling	1	

* NOT ILLUSTRATED

RECOMMENDED STOCK PARTS

GARLAND PARTS IDENTIFICATION
WENDY'S COMBO RANGE model STW286A
COMPONENTS

ITEM	PART #	DESCRIPTION	QTY	CRITICAL
180	2619100	Tube (7/16") –Manifold to Sub Manifold	1	
181	2624600	Tube (¼") -Oven Solenoid Valve to (¼) Compression Coupling	1	
182	4517601	Tube (¼") –Solenoid Valve to Griddle Pilot LH	1	
183	4517602	Tube (7/16") –Solenoid Valve to Griddle Burner Orifice LH	1	
184	4517603	Tube (7/16") –Solenoid Valve to Griddle Burner Orifice RH	1	
185	4517600	Tube (¼") –Solenoid Valve to Griddle Pilot RH	1	
186	4517062	Front Rail	1	
187	4517039	Heat Shield - Hot Top Valve	1	
188	G03053-1	Momentary Pushbutton Switch NOTE: Use Service Kit 4530075.	1	
	4530075	Kit - Momentary Switch NOTE: Kit includes a momentary switch, insulators, terminal tabs, and installation instructions. See Bulletin# GAR-05-11-AIC .	1	C
188A	3064800*	Decorative Dress Nut APEM#A540	1	
189	4516937	Handle Assy	1	
190	4517048	Valve Panel	1	
191	4517416	Switch Box	1	
192	4517417	Switch Box Cover	1	
193	4517061	Hot Top Overlay	1	
194	G0728-1-9	Thermostat Guard	1	
195	3043100	Valve Knob	4	C
196	2310000	Dial Insert (Hot Top)	1	
197	2615802	Flue Box	1	
198	2642200	Coiled Cord (Domestic Model)	1	
199	2612299	Main Manifold	1	
200	2621500	Valve Connector Fitting (7/16")	3	
201	1095499	3/8 NPT to 7/16 Comp Fitting	5	
202	G03674-3	Valve -Pilot ¼" Angle 90Deg	3	
203	G02352-1	Elbow 3/8 NPT to 7/16cc Male	2	
204	2619500	Solenoid Valve 24v	3	C
205	2475700	Relay Clip	1	
206	2672200	Relay	1	C
207	2475600	Relay Base	1	
208	2617300	Component Side Support	1	
209	2613300	Component Support	1	
210	2613400	Component Slide	1	
211A	2619600	Pilot Ignition Control Module 24V (Robertshaw) NOTE: Used UP TO 4-OCT-2005.	3	C
211B	4517608	Pilot Ignition Control Module (Johnson) NOTE: Used FROM serial# 0510100130790 (STW286A-0002) and UPTO serial# 0903100100822. NOTE: A unit manufactured between 5-OCT-2005 to 23-MAR-2009 with a Johnson Ignition Control will require Service Kit 4526834 (Johnson to Robertshaw Ignition Control Conversion Kit) .	3	C
211C	2619600	Pilot Ignition Control Module 24V (Robertshaw) NOTE: Used FROM serial# 0903100100823 (STW286A - 0009)	3	C
212	2573000	Terminal Block 3 Circuit	2	

* NOT ILLUSTRATED

RECOMMENDED STOCK PARTS

GARLAND PARTS IDENTIFICATION
WENDY'S COMBO RANGE *model* STW286A
COMPONENTS

ITEM	PART #	DESCRIPTION	QTY	CRITICAL
213	4517609	Thermostat - Griddle	2	C
214	2652401	75VA Transformer (120V)	1	C
	2652402	75VA Transformer (208/240V)	1	C
215	4516857	Control Panel	1	
216	4517060	Overlay - Control Panel	1	
217	2629000	Oven Control Cover	1	
218	2628700	Oven Control Cover Support	1	
219	2630200	Switch SPDT ON-OFF-ON	1	C
220	2146800	Illuminated Power Switch	1	C
221	2667200	Pilot Assy Amber	3	
222	4517756*	Extra 7/16" c.c. Hardware	1	
225	4514749	Spark Generator - 230V, 4 outlet (For Top Section)	1	C
	4514750	Spark Generator - 120V, 4 outlet (For Top Section)	1	C
226	3050401	Terminal Block (230V)	1	
227	4517052	BX-Connector Retainer	1	
229	G03883R	Thermoflex Insulating Sleeve	1	
230	2200203	High Tension Wire Lead 64"	1	C
232	4520038	Oven Pilot Shield	1	
233	4520028	Vent Cover	1	
234	4516839	Exhaust Fan Filter	1	
235	4517051	Capillary Heat Shield	1	
236	4516938	Handle End	2	
237	4517424	Front Rail Support Bracket - RH	1	
239	3043300	Spring Retainer	4	
240	3043202	Hot Top Valve Knob Hub	1	
241	3043207	Griddle/Oven Valve Knob Hub	3	
242	4520024	Filter Cover	1	
243	G01500-1	Ground Terminal (230V)	1	
244	4520454	Label Filter Replacement	1	
245*	2667000	Lighting / Shut-Down Instruction Label	1	
STW286A RELATED KITS				
250	CK137A	Complete Door Assembly (Round) Kit includes items 69, 70, 71, 73, 74, 75, 76, 77, 78, 79, & 80.	1	
251*	4529734	Conversion Kit (for Natural Gas Unit Only) to Increase oven BTU to 38,000. See Bulletin# GAR-03-11-A .	1	

* NOT ILLUSTRATED
RECOMMENDED STOCK PARTS

GARLAND PARTS IDENTIFICATION
WENDY'S COMBO RANGE *model* STW286A

RELATED BULLETINS

BULLETIN #	SUBJECT	DATE
GAR-03-11-A	Wendy's Range, Kit to increase oven BTU.	May 13, 2011
GAR-05-11-AIC	Service Kit for Momentary Switch Part# 4527834 & G03053-1	September 13, 2011

GARLAND PARTS IDENTIFICATION
WENDY'S COMBO RANGE model STW286A

REVISION HISTORY

REV.	PAGE#	ITEM#	NOTES	DATE
0			New part list released	June 28/05
1	8,11	244	New part number added	Aug 25/05
2	4,5	4A	Item# deleted	Oct 17/05
	8,9	165A	Item# deleted	
	10	194	Part number correction - was G0728-1-8	
		211A	Description changed & up to date added	
		211B	New part number added	
11	245	New part number added - not shown		
3	10	211A, 211B	Description changed	March 27/06
		225		
4	4		Drawing updated - Item 250 added	May 26/06
	6	69	Part number changed - was 1439901	
		76	Part number changed - was G03984-03-8	
	11	250	Complete Door Kit Added	
5	9	149	Part # changed - was #4517409 (Grease Chute Rear)	Jan 22/07
6	7	135	Part # changed - was #4516885	Feb 21/07
7	9	141	Part # changed - was 4517190 (Bulb Clamp/Shield Assy)	Nov 27/07
		141A	New part number added	
		141B		
			Critical column added	
8	10	211C	New part number added	June 1/09
9	8		New Drawing	Aug 6/09
	7	138A,138B	New part number added	
	7,9	139, 140	Description changed	
10	10	211A,211B	Note deleted - was (For Oven Section)	Sept 28/09
11	10	188	Momentary Switch Kit 4530075 replaces part G03053-1 (Momentary Switch).	Oct 13/11
	6	70, 70A	New Garland Nameplate 4529724 and fasteners F640 replace old design 3077100 and fasteners F95.	
	5	35, 36	Qty of Casing Support Angle 1402400 changed from 2 to 4. Item 36 is no longer needed (Fire Plate Rear Support 1325900).	
	11	251	Added Kit 4529734 (BTU conversion kit) and related bulletin#.	
12	5, 6	31, 51, 52	New insulation parts replaced the old ones: 4527368 replaced 1309021; 4527370 replaced 1309025; 4527369 replaced 1309022.	Nov 21/11

 **Garland**[®]

 **Manitowoc**