



MASTER SERIES
XG36-XPRESS GRILL GAS
XG36-S2L (SONIC GRILL)

PARTS LIST

Toll Free Phone, (US & Canada): (800) 427-6668

Toll Free Fax, (US & Canada): (800) 361-7745

<http://www.garland-group.com>


Garland
MASTER SERIES XG36-XPRESS GRILL GAS
XG36-S2L (SONIC GRILL)

Contents:

Gas Xpress Grill Complete View Page 4

Actuator Assembly Page 8

Platen Assembly Page 10

Burner Assembly Page 12

Component Bracket Assembly Page 14

Heat Sink Assembly Page 16

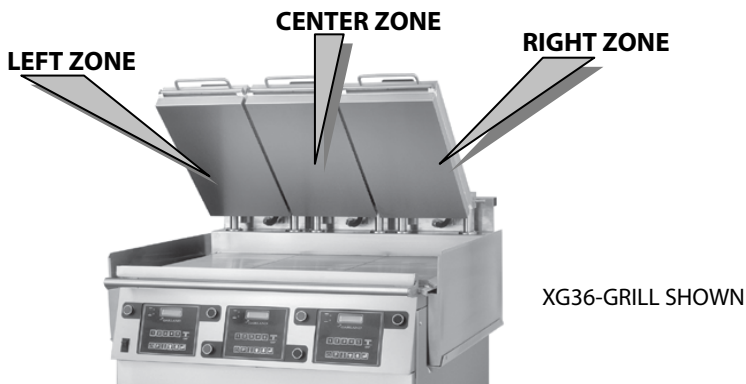
Wiring Harness And Description Where Used Page 18

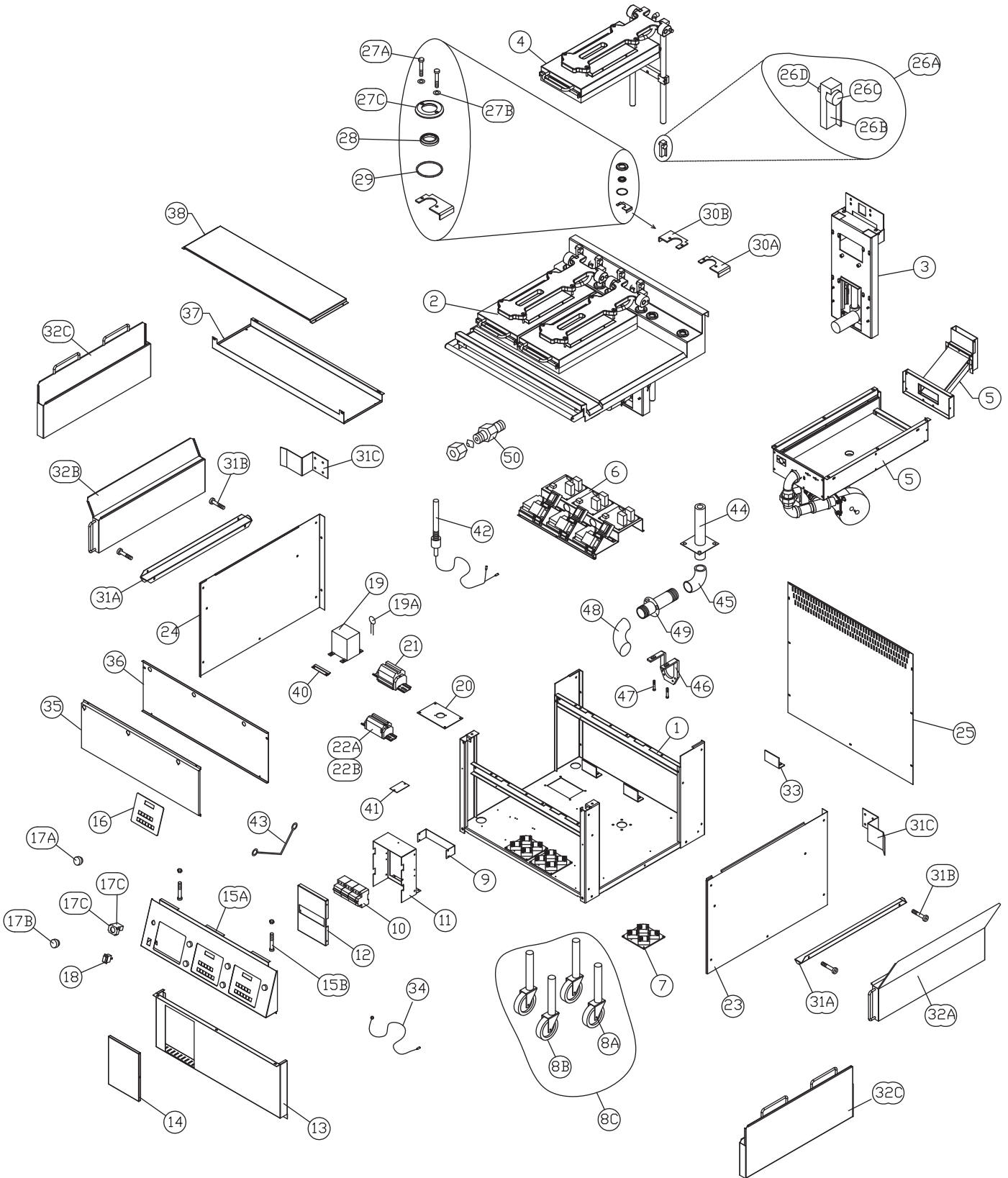
Accessories And Tools Page 19

Gas Tubing Page 20

Part Digital Photos Page 21

Revision History Page 22





XG36-#1

GARLAND PARTS IDENTIFICATION

Gas - Xpress Grill Models: XG36 & XG36-S2L - Complete Exploded View

ITEM	PART #	DESCRIPTION	XG36 (3 PLATENS)	XG36-S2L (2 PLATENS)	CRITICAL
1	4516058	Body Base Weld Assembly	1	1	
2	4517657	Plate Weld Assembly	1	1	
3	Page 8	Actuator Assembly	3	2	
4	Page 10	Platen Assembly	3	2	
5	Page 12	Burner Assembly	1 per zone	1 per zone	
6	Page 14	Component Bracket Assembly	1	1	
7	Page 16	Heat Sink Assembly	1 per zone	1 per zone	
8A	4516978	Caster, Nonlocking	2	2	
8B	4517563	Caster, Locking	2	2	
8C	4520678	Caster Kit - Locking & Nonlocking	1	1	
9	4516113	Circuit Support	1	1	
10	4517814	Circuit Brkr, 3 Pole	1	1	C
11	4516111	Circuit Box	1	1	
12	4516112	Circuit Cover	1	1	
13	4516109	Front Panel Lower	1	1	
14	4516110	Access Door	1	1	
15A	4516108	Front Panel Upper	1	1	
15B	8003219	MSCR-PH-PHIL 8-32 X 1/2 STL ZP	4	4	
	8001203	Nut - Hex - STL 8-32	4	4	
	8000202	LKWSHR - SPL-STL 8X1 9/64X3/64	4	4	
16A^	4516983	Fast Control (5 Button w/Gapkey)	1 per zone		C
16B^	4524774	Controller, Quick Pick, Sonic, 8 Button	1 per zone	1 per zone	C
17A	1859604	Push Button (Black)	1 per zone	1 per zone	
17B	1859605	Push Button (Green)	1 per zone	1 per zone	
17C	1859606	Contact Block	2 per zone	2 per zone	C
17D	1859607	Mounting Latch	2 per zone	2 per zone	
18	1872404	Power Switch	1	1	C
19	1864001	Main Transformer	1	1	C
19A	4518382	Surge Supressor Required for 380/400/415 Volts Only	1	1	
20	1868901	Power Cord Plate Domestic	1	1	
21	4525397	Terminal Block, 10Mm	1	1	C
22A	4516981	Terminal Block, 120V	1	1	C
22B	4522739	Fuse, 5 Amp 125 VAC 5mm X 20mm		1	C
23	4516105	Body Side, Right	1	1	
24	4516106	Body Side, Left	1	1	
25	4517658	Back	1	1	
26A	4520463	Arm Pivot Block Assembly	6	4	
26B	1856802	Arm Pivot Block	6	4	
26C	1854902	Cam Follower	6	4	
26D	1854903	Jam Nut	6	4	
27A	8003437	MSCR - HH 8/32 x 1 Stl	12	8	
27B	1874301	#8-32 O-Ring	12	8	
27C	4516098	Seal Cap	6	4	
28	4526315	Shaft Wiper, Split, Black w/Orange Dot,Viton,1.50 Dia	6	4	C
29	4525256	Seal Cap O-Ring - Xpress	6	4	C
30A	4520408	Seal Cap Bracket Lt	3	2	
30B	4520407	Seal Cap Bracket Rt	3	2	
31A	4516976	Grease Bucket Support	2	2	
31B	8000213	Lock Washer - SPL #10X0.334X.047 SS	4	4	
	8000338	Washer-FLT, 7/32 X 1/2, SS	4	4	
	8003143	MSCR-TH-PHIL 10-24 X 1-1/4 18-8	4	4	
31C	4526931	Grease Bucket Clip	2	2	

* NOT ILLUSTRATED

^ DIGITAL PHOTO AT THE END

RECOMMENDED STOCK PARTS

GARLAND PARTS IDENTIFICATION

Gas - Xpress Grill Models: XG36 & XG36-S2L - Complete Exploded View

ITEM	PART #	DESCRIPTION	XG36 (3 PLATENS)	XG36-S2L (2 PLATENS)	CRITICAL
32A	4524822	Grease Bucket BA Rt - (Optional) (Sonic)	1	1	
32B	5424823	Grease Bucket BA Lt - (Optional) (Sonic)	1	1	
32C	4516308	Grease Bucket BA (Straight) (Standard)	2	2	
33	4516977	Actuator Base Brace	3	2	
34	1866101	Ground Wire 24"	1	1	
35	4517593	Front Heat Shield, Outer	1	1	
36	4517594	Front Heat Shield, Inner	1	1	
37	4517654	Burner Heat Shield, Lower	1	1	
38	4517655	Burner Heat Shield, Upper	1	1	
40	1869301	Transformer Bracket	1	1	
41	4516114	Circuit Brace	1	1	
42	4520578	Grill Plate Thermocouple	1 per zone	1 per zone	C
43	1866103	Strain Relief Wire 12.5"	2	2	
44	4517394	Gas Inlet	1	1	
45	1026715	1" x 3/4" 90deg Reduction Elbow	1	1	
46	4525493	Manifold Support Bracket	1	1	
47	8003210	Mscr - Ph - Phil8-32x3/8 Slft Pstlzp	4	4	
48	1026704	3/4" x 90 Deg Elbow	1	1	
49	4525494	Nipple Assembly	1	1	
52	1095499	7/16CC Straight Connector 3/8NPT	3	3	

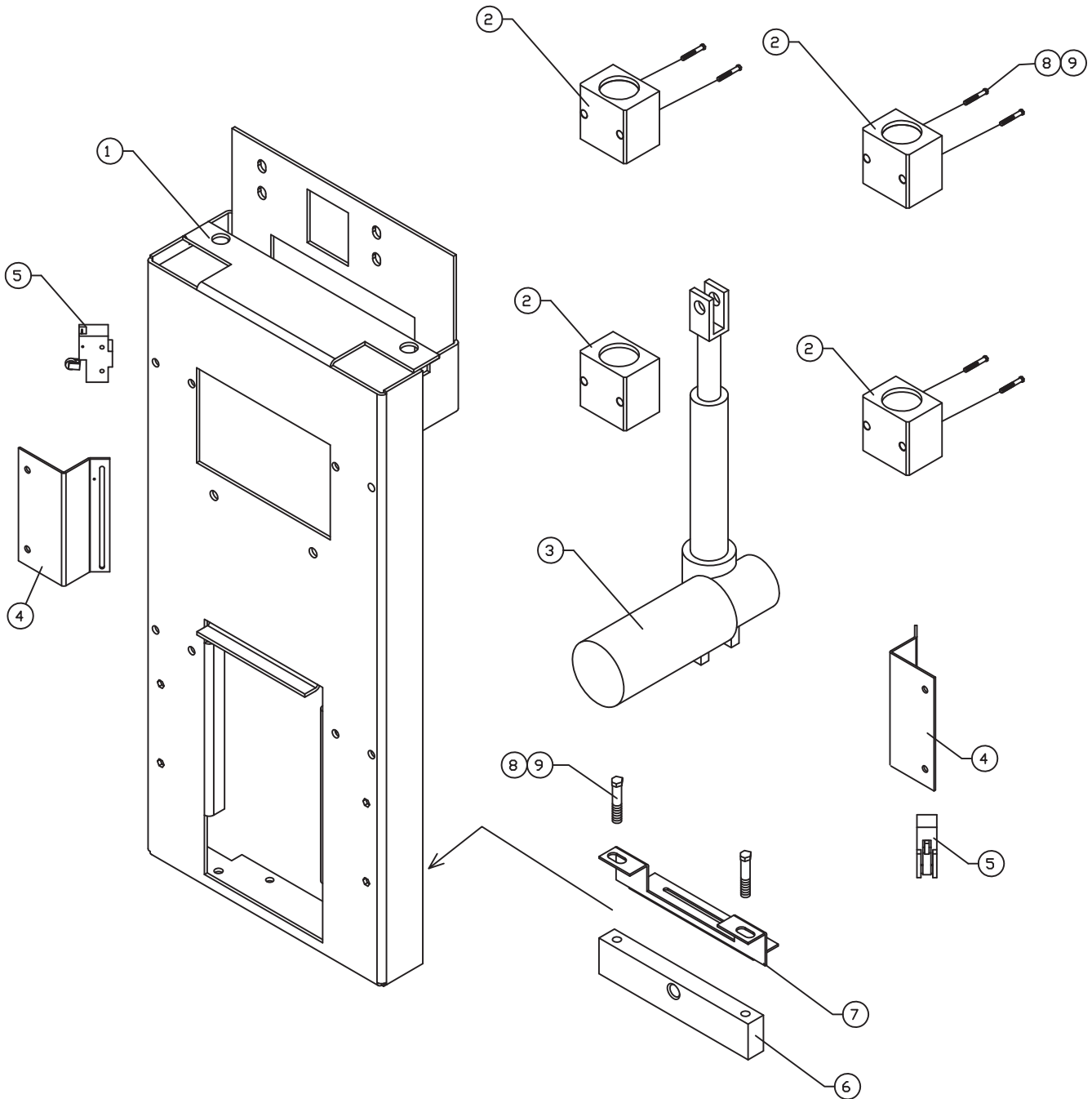
* NOT ILLUSTRATED

^ DIGITAL PHOTO AT THE END

RECOMMENDED STOCK PARTS

NOTES

(ONE ACTUATOR PER PLATEN)



XG36 - #2

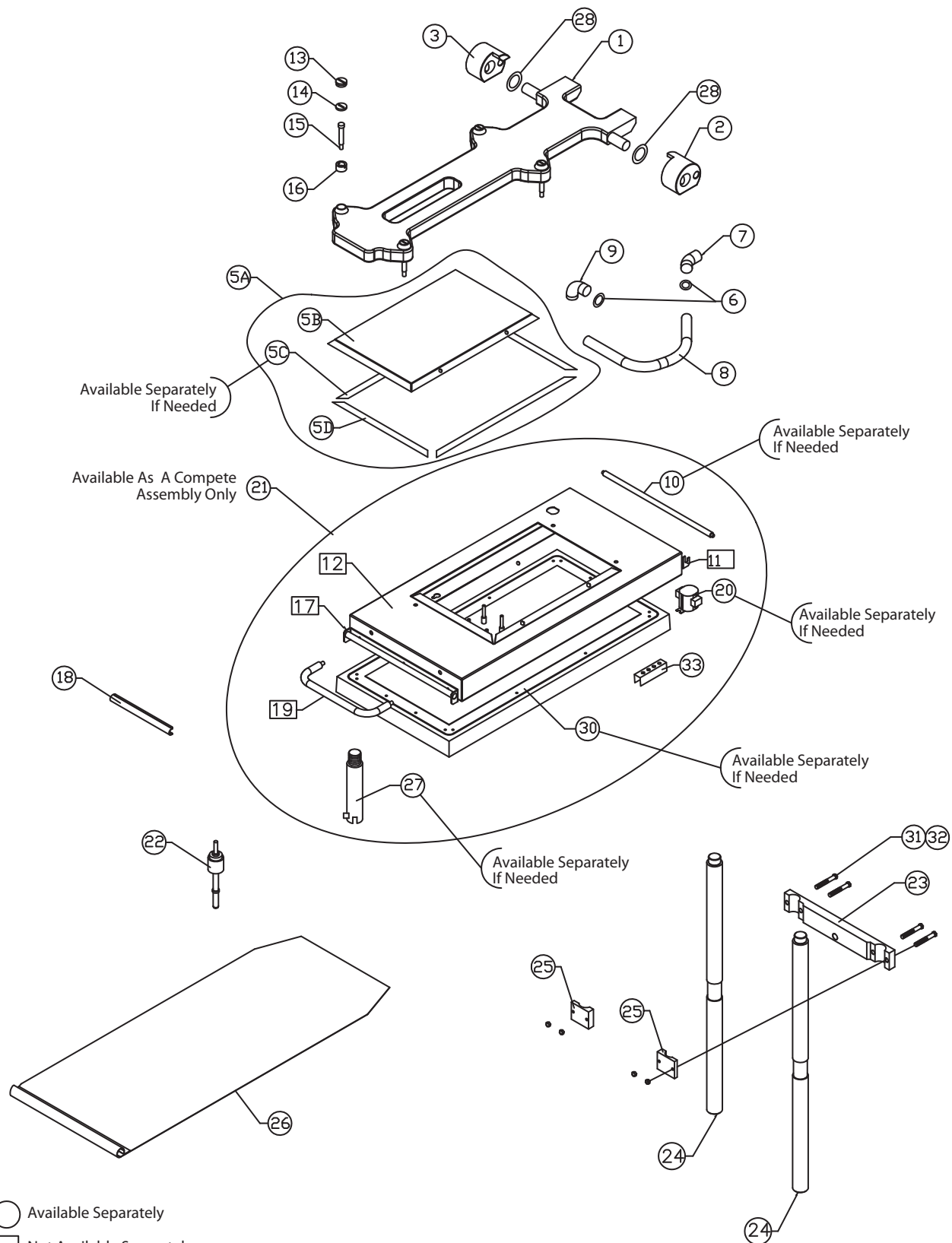
GARLAND PARTS IDENTIFICATION

Gas - Xpress Grill - Models: XG36 & XG26-S2L - Actuator Assembly View

ITEM	PART #	DESCRIPTION	QUANTITY FOR ONE ACTUATOR		CRITICAL
			XG36	XG36-S2L	
1	4516080	Actuator Frame Wa	1	1	
2	4518156	Pillow Block Assembly	4	4	
3	4525541	Linear Actuator	1	1	C
4	1857601	Switch Bracket	2	2	
5	1855601	Upper/Lower Platen Limit Switch	2	2	C
6	4518787	Actuator Mount Block (Painted)	1	1	
7	4516097	Actuator Base Bracket	1	1	
8	8003424	1/4" - 20 x 2.250" Shoulder Bolts	8	8	
9	8000206	1/4" Lock Washer	8	8	

* NOT ILLUSTRATED

RECOMMENDED STOCK PARTS



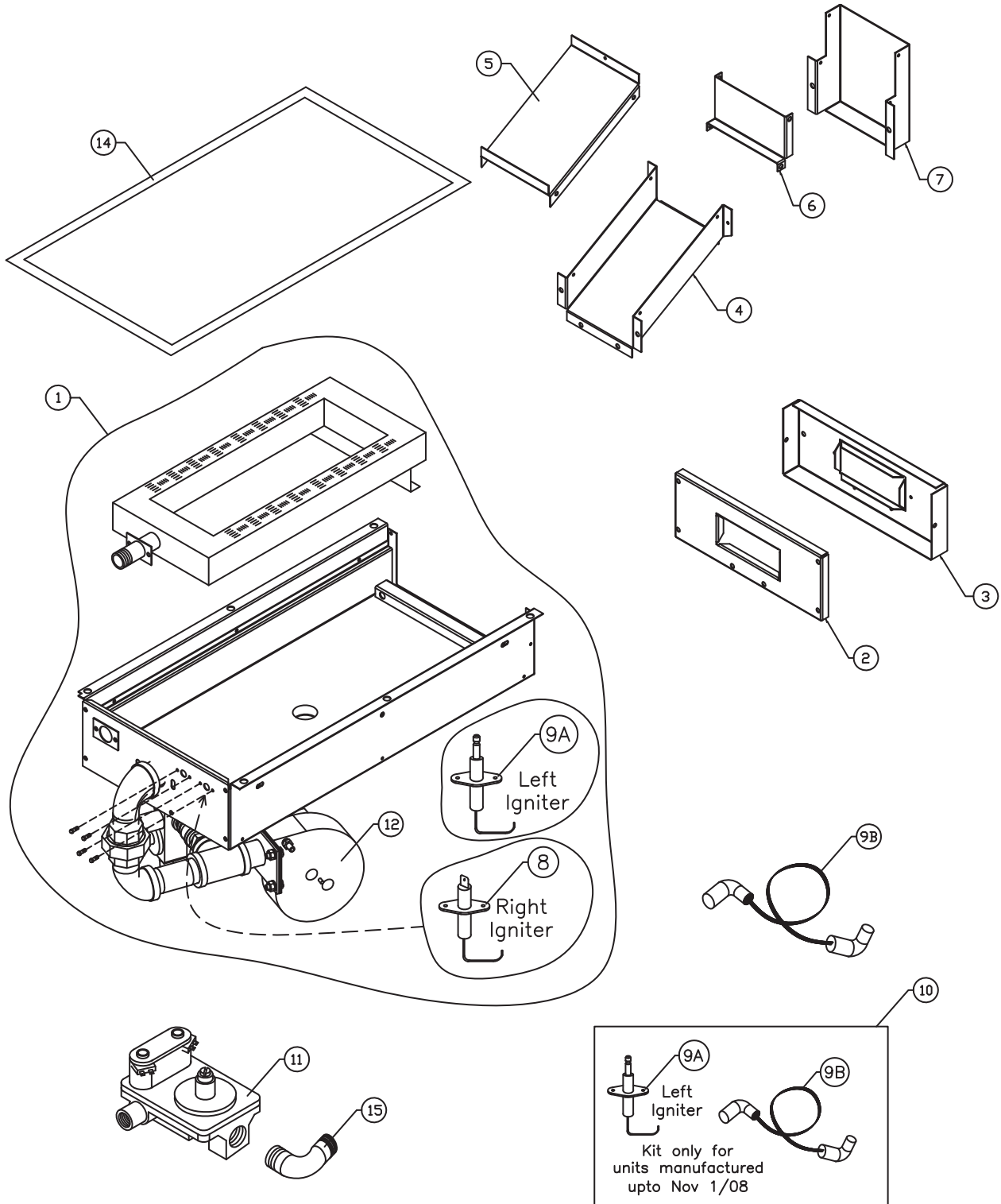
GARLAND PARTS IDENTIFICATION

Gas - Xpress Grill Models: XG36 & XG36-S2L - Platen Assembly View

ITEM	PART #	DESCRIPTION	QUANTITY FOR ONE PLATEN		CRITICAL
			XG36	XG36-S2L	
1	4516085	Platen Arm	1	1	
2	4520422	Carriage Block, Assembly, Rt	1	1	
3	4520423	Carriage Block, Assembly, Lt	1	1	
5A	4527090	Platen Lid / Silicon Gasket Assembly	1	1	
5B	4516092	Platen Lid	1	1	
5C	4527091-01	1/16" Silicone Gasket Cut to 8-3/8"- 45deg ends	2	2	
5D	4527091-2	1/16" Silicone Gasket Cut to 12-3/8"- 45deg ends	2	2	
6	4525542	Seal, Coretex, Conduit	2	2	
7	4517021	3/8" Connector, 45 Deg	1	1	
	1854504	1/2" x 45 Deg Liquid Tight	1	1	
8	4517022	Platen Conduit - 3/8" Dia	1	1	
	4526857	1/2"Dia ATX-11 Conduit Cut To 13"	1	1	
9	4517020	3/8" Connector, 90 Deg	1	1	
	4521709	1/2" Connector 90 Deg	1	1	
10	4517008	Teflon Bar, Rear	1	1	
11	4516094	Teflon Holder, Rear (Not Available Separately) Note: Not Field Replaceable	1	1	
12	4516091	Platen Cowl (Not Available Separately)	1	1	
13	1859102	Platen Adjuster Cap	4	4	C
14	1859103	Platen Lock Nut	4	4	C
15	8005401	Shoulder Bolt	4	4	C
16	1859101	Platen Adjuster Nut	4	4	C
17	4516093	Teflon Holder, Front (Not Available Separately) Note: Not Field Replaceable	1	1	
18	1851301	Teflon Clip	1	1	C
19	1859501	Upper Platen Handle (Not Available Separately)	1	1	
20	1781301	Hi Limit - Auto Reset	1	1	C
21	4519753	Platen Assembly Complete 220V	1	1	C
	4519752	Platen Assembly Complete 208V	1	1	
	4519755	Platen Assembly Complete 240V	1	1	
22	1859401	Platen Thermocouple	1	1	C
23	4516089	Cross Member	1	1	
24	4516084	Actuator Shaft	2	2	
25	4516090	Cross Member Bracket	2	2	
26	1799303	Teflon Sheet	2	2	C
27	1859402	Grill Plate/Platen Bayonet Adapter	1	1	
28	1855903	Teflon Washer Small	2	2	
30	1937701	Goretex GSKT Tape .75W .065T	5.5 Ft	5.5 Ft	
31	8003423	Mscr-HH-Grd5 1/4-20x1-1/4Stl 2 (to attach #23 & #25)	4	4	
32	8000203	Lkwshr - SPL 1/4 x 1/2 x 1/16 Stl 2P (to attach #23 & #25)	4	4	
33	1865801	Hi Limit Switch Bracket	1	1	

* NOT ILLUSTRATED

RECOMMENDED STOCK PARTS



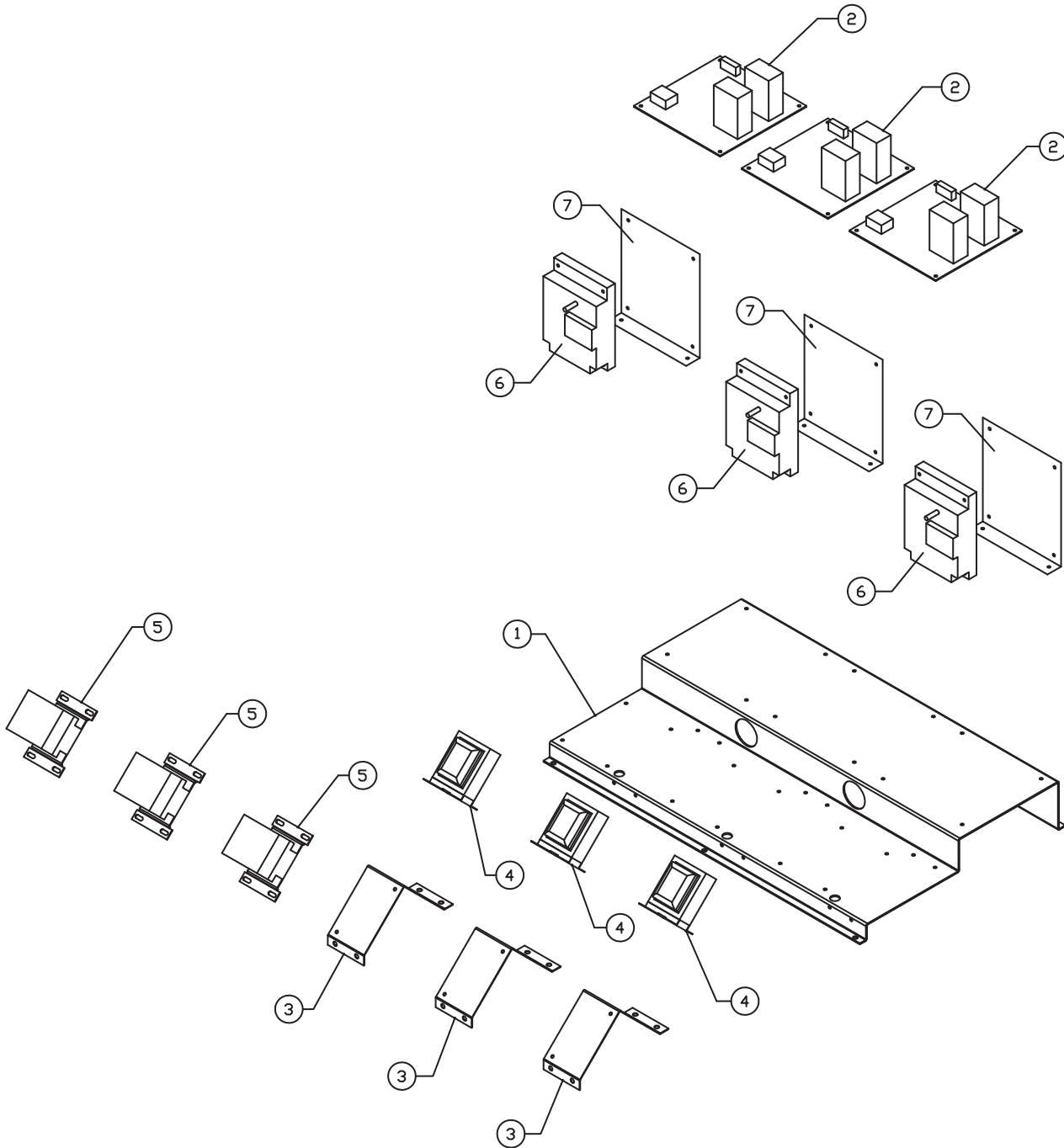
GARLAND PARTS IDENTIFICATION

Gas - Xpress Grill Models: XG36 & XG36-S2L - Grill Burner Assembly View

ITEM	PART #	DESCRIPTION	QUANTITY FOR ONE BURNER		UP TO	FROM	CRITICAL
			XG36	XG36-S2L			
1	4517403	Burner Assembly, Lp	1	1			
	4517462	Burner Assembly, Nat	1	1			
2	4517396	Flue Box, Inner	1	1			
3	4517397	Flue Box, Outer	1	1			
4	4517398	Flue Bottom	1	1			
5	4517399	Flue Top	1	1			
6	4517401	Flue Riser, Inner	1	1			
7	4517400	Flue Riser, Outer	1	1			
8	4524066	Igniter	2	2	1-Nov-08		C
		<i>Note: If Left Igniter Needs Replacement - Order Kit Item# 10</i>	(see note)	(see note)			
9A	4525537	Electrode Igniter - Rajah	1	1		2-Nov-08	C
9B	1864803	Ignition Cable	1	1		2-Nov-08	C
10	4525538	Service Kit Igniter & Igniter Cable - Spark Plug Type Included Item # 9A & 9B. Units Manufactured Up To Nov 1/08 Will Required Kit	1	1	1-Nov-08		
11	1864701	Gas Valve - Nat	1	1			C
12	4525845	Blower / Motor 120V	1	1			
14	WFT125750	1/8 x 3/4 Woven FG Tape W/PSA	5.5 Ft	5.5 Ft			
15	1027499	7/16CC Male Connector Ass'y 3/8NPT	1	1			

* NOT ILLUSTRATED

RECOMMENDED STOCK PARTS



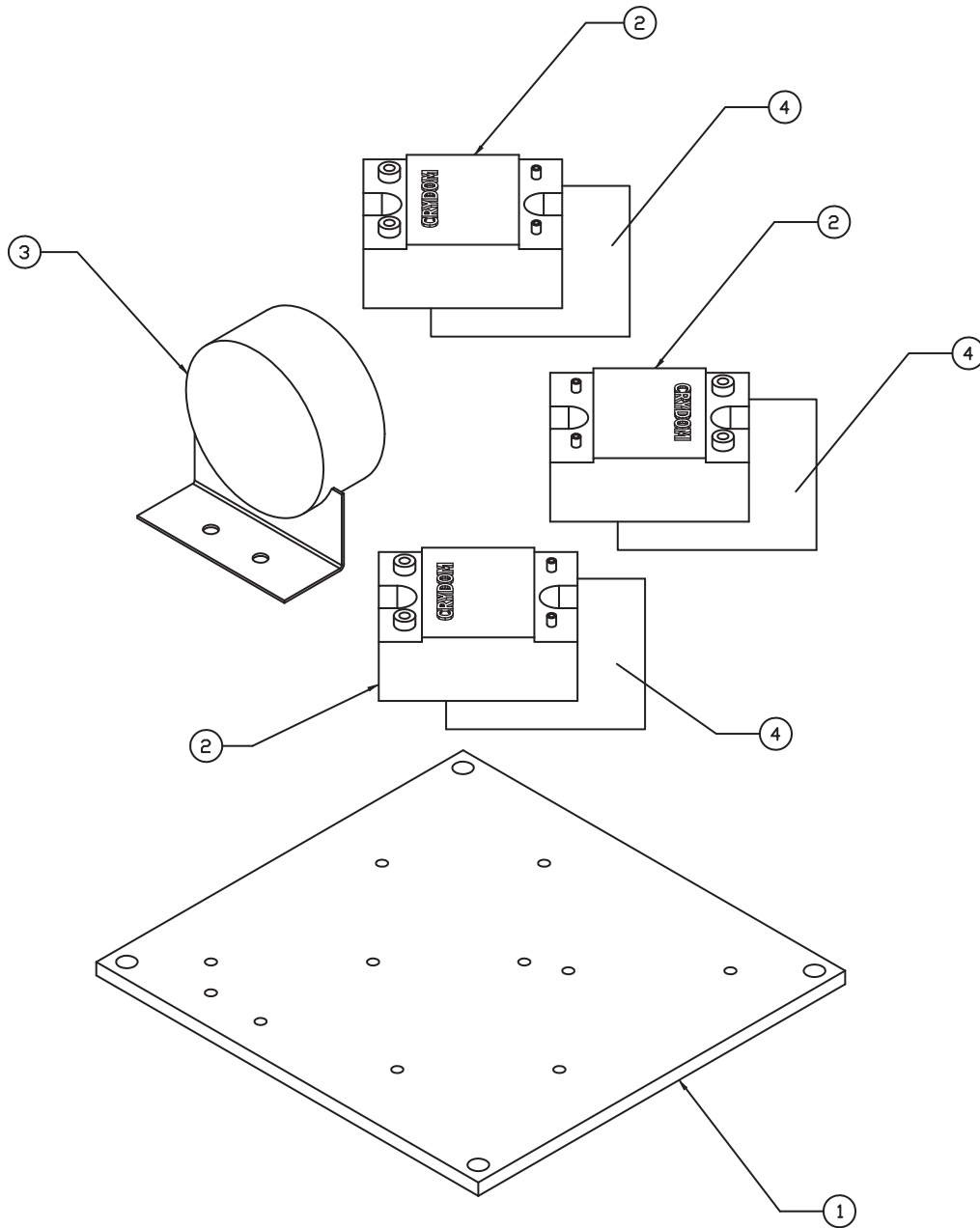
GARLAND PARTS IDENTIFICATION

Gas - Xpress Grill Models: XG36 & XG36-S2L - Grill Bracket Assembly View

ITEM	PART #	DESCRIPTION	QUANTITY FOR ALL ZONES		CRITICAL
			XG36	XG36-S2L	
1	4516078	Component Mounting Bracket	1	1	
2	4516989	Motor Speed Control	3	3	C
3	4516079	Contactoer Bracket	3	3	
4	1269800	24 Volt Transformer	3	3	C
5	1637001	Contactoer	3	3	C
6	1864901	Ignition Module	3	3	C
7	1865901	Ignition Module Bracket	3	3	

* NOT ILLUSTRATED

RECOMMENDED STOCK PARTS



GARLAND PARTS IDENTIFICATION

Gas - Xpress Grill Models: XG36 & XG36-S2L Heat Sink Assembly View

ITEM	PART #	DESCRIPTION	QUANTITY FOR ONE ZONE		CRITICAL
			XG36	XG36-S2L	
1	4516116	Heat Sink	1 per zone	1 per zone	
2	4516988	Relay	3	3	C
3	4517392	Pressure Switch	1	1	
4	1811903	Thermal Interface MAT	3	3	

* NOT ILLUSTRATED

RECOMMENDED STOCK PARTS

GARLAND PARTS IDENTIFICATION

Gas - Xpress Grill Wire Harness And Description Where Used - Model: XG36 & XG36-S2L

ITEM	PART #	DESCRIPTION & LOCATION	XG36	XG36-S2L	CRITICAL
1*	1859850	Description: 120V Harness Location: Motor Speed Control, 120 volt side of 120/24 volts transformer, Power to Actuator, 120 volts terminal block.	1	1	C
2*	1859851	Description: CB Contactor Harness Location: Circuit Breakers, Contactors, high Voltage side of SSR's for Platens, 120 volt terminal block.	1	1	C
3*	1859852	Description: XMFR Harness Location: Main Power Circuit Breaker, Main Power Switch, 240/1 20 volt Transformer, 120 volt Terminal Block, Main Terminal block	1	1	C
4*	1859853	Description: Control Harness Location: Low Voltage side of SSR's, 24 volt out put on 120/24 volt transformer, encoder, upper/lower Limit Switches, Main Control, Motor Speed Control, Green and Black push Buttons	3	3	C
5*	1859854	Description: Ignition Harness Location: Pressure Switch, Ignition Module, Gas Valve, Main Control, Blower Motor, 120 volt Terminal Block.	1	1	C
6A*	1859855	Description: Platen Harness P1 Connector to the Platen Elements.	3	3	C
6B*	0007500FS	Fiberglass Sleeving Must replace with item 6A	3	3	C
7*	1859860	Description: Switch Harness Green and Black button Harness one per zone.	3	3	C
8*	1859829	Description: Contactor Jumper Harness Straight leads from terminal Block to Circuit Breakers	1	1	C
9*	1859810	Description: Power Switch Harness Location: Main Power Switch to Connector S3.	1	1	C

* NOT ILLUSTRATED

RECOMMENDED STOCK PARTS

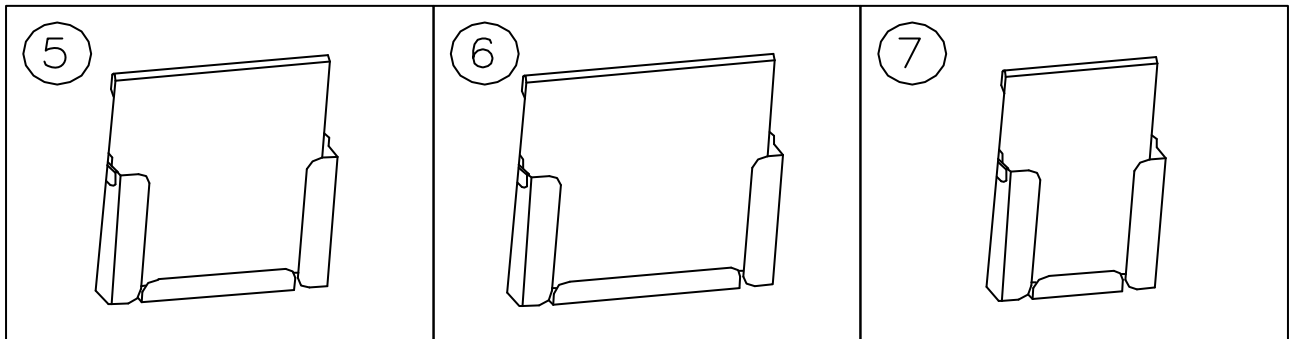
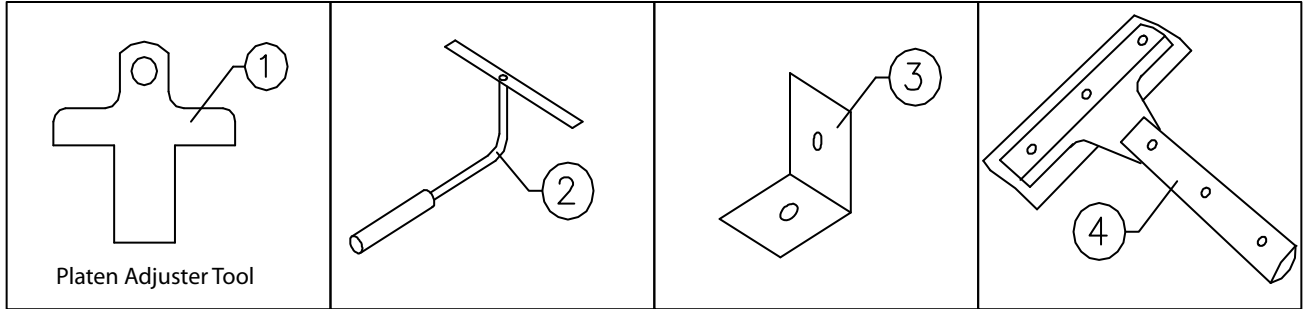
GARLAND PARTS IDENTIFICATION

Gas - Xpress Grill Accessories And Tools - Model: XG36 & XG36-S2L

ITEM	PART #	DESCRIPTION	QUANTITY	CRITICAL
1	4523323	Platen Adjuster Tool		
2	4525560	Teflon Tool		
3	1838701	Platen Leveling Tool CK		
4	1868201	Grill Wiper		
5	4526114	Tool Holder for Scraper		
6	4526115	Tool Holder for Wiper		
7	4526113	Tool Holder for Spatula		

* NOT ILLUSTRATED

RECOMMENDED STOCK PARTS



Note: Tool Holders Require The Flared Design Grease Buckets Found in Page 4, Items 32A & 32B

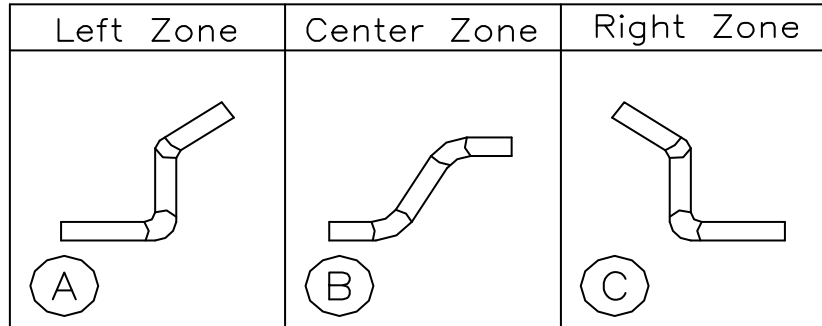
GARLAND PARTS IDENTIFICATION

Gas - Xpress Grill Gas Tubing - Model: XG36 & XG36-S2L

ITEM	PART #	DESCRIPTION	XG36	XG36-S2L	CRITICAL
A	4517378	Tubing, Left - (Location, Left Zone)	1	1	
B	4517377	Tubing, Center - (Location, Center Zone)	1	1	
C	4517376	Tubing, Right - (Location, Right Zone)	1	1	

* NOT ILLUSTRATED

RECOMMENDED STOCK PARTS

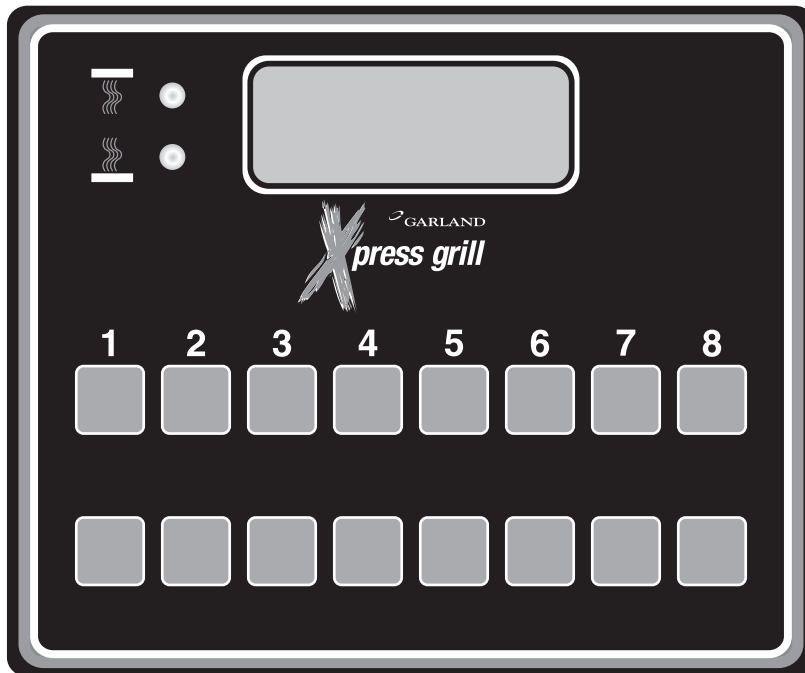


GARLAND PARTS IDENTIFICATION

Gas - Xpress Digital Photos - Model: XG36 & XG36-S2L



Part Number	Description	Location
4516983	Fast Control	Page 5 Item 16A



Part Number	Description	Location
4524774	Quick Pick Control Generic	Page 5 Item 16B

GARLAND PARTS IDENTIFICATION

Revision History

REV. #	PAGE #	ITEM #	NOTE	DATE	
			XG36 XPRESS GRILL (GAS) Part List Book Released	Feb 24/09	
1	21		New Page Added w/two Digital Photos	Feb 27/09	
	Index		Part Digital Photo Row Added		
	5	16	Foot Note Added & Symbols On the Item Number		
2			New Model Added - XG36-S2L Sonic	Oct 30/09	
	4		New Drawing		
	5	16A			Description Changed - (5 Button W/Gapkey) Added
		16B			Description Changed - Was Controller, Generic Express
		22A			Was Item 22
		19A,22B,31C			New Part Number Added
		27A,27B			Item Number Changed 27A Was 46 & 27B Was 45
		27C			Was Item 27
		28			New Part Number Added
		29			Description Changed
	6	32A,32B			Description Changed - (Optional) (Sonic) Added
		32C			Description Changed
		34			Item Number Changed 34 Was 44
		44			Item Number Changed 44 Was 34
		50			Item Number Changed (Was Item 47)
		45,46,47, 48,49			New Part Number Added
	10		New Drawing		
	11	7,8,9			New Part Number Added - (1854504, 4526857, 4521709)
		8			Description changed
		5A,33			New Part Number Added
		5			Item Number 5 Replace By 5C And 5D
		5B			Was Item 6
		6			New Part Number
18	10		Item removed - was (4525505 : Cord and Plug Assy, NEMA 15-50)		

Notes

