



GX Series Gas Step Up Hot Plate

Item: _____

Quantity: _____

Project: _____

Approval: _____

Date: _____

Models:

GXHP2

GXHP3

GXHP4



Model GXHP3

Standard Features:

- Stainless steel front, landing ledge and sides
- 24" (610mm) - 48" (1219mm) widths with four to eight open burners
- Heavy duty removable drip pan
- Standing pilot for instant lighting
- Bowl style grate configuration
- 20,000 BTU/hr per burner - natural gas

- 17,500 BTU/hr per burner - propane gas
- Individual burner control
- 4" (102mm) legs with adjustable feet
- 3/4" rear gas connection
- 3/4" gas regulator
- One year parts and labor warranty

Optional Features:

- Stainless steel stand with intermediate shelf
- Swivel casters on stand

Specification:

Shall be Garland GX series Step Up Hot Plate. Model _____ with a total BTU/hr rating of _____ when used with natural/propane gas. Finish is to be stainless steel front and sides.



Model	Description (W xD)	Total BTU Natural Gas	Total BTU Propane Gas
GXHP2	4 Open Burners 24"(605mm) x 27-1/4"(794mm)	80,000	70,000
GXHP3	6 Open Burners 36"(914mm) x 27-1/4"(794mm)	120,000	105,000
GXHP4	8 Open Burners 48"(1219mm) x 27-1/4"(794mm)	160,000	140,000

GX Series Gas Step Up Hot Plate

Garland Commercial Industries, LLC
185 East South Street
Freeland, PA 18224
Phone: (570) 636-1000
Fax: (570) 636-3903

Garland Commercial Ranges Ltd
1177 Kamato Road,
Mississauga, Ontario
L4W 1X4 CANADA
Phone: 905-624-0260
Fax: 905-624-5669

Enodis UK LTD
Swallowfield Way,
Hayes, Middlesex
UB3 1DQ ENGLAND
Telephone: 081-561-0433
Fax: 081-848-0041

Enodis®

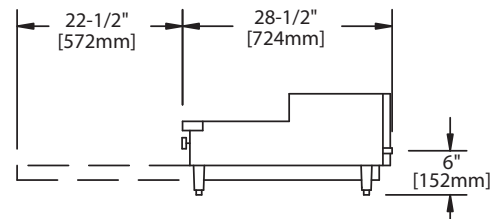
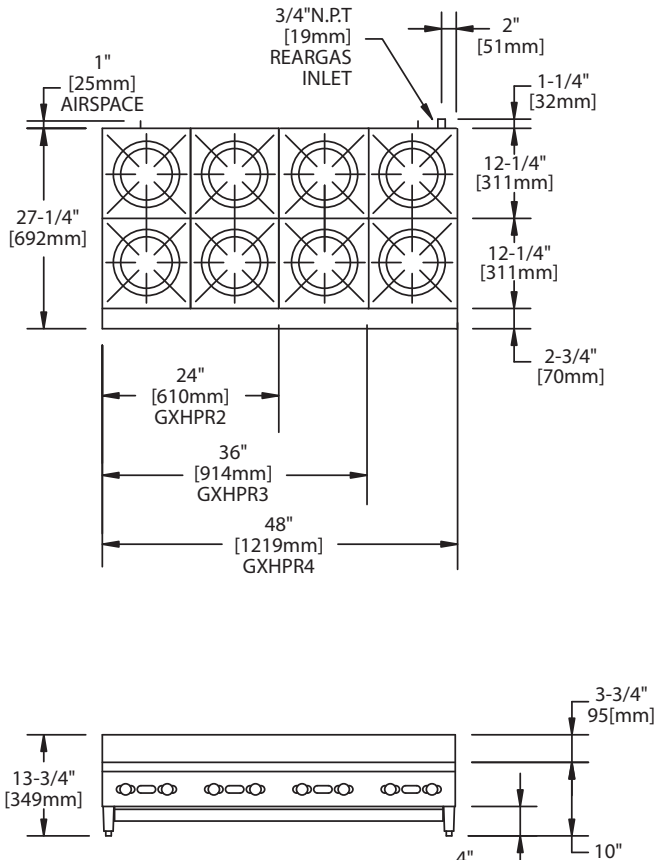
Specifications					Total BTU	
Model #	Dimensions: In. (mm)			No. of Burners	Natural Gas	Propane Gas
	Width	Depth	Height			
GXHPR2	24(605)	27-1/4(794)	13(330)	4	80,000	70,000
GXHPR3	36(914)	27-1/4(794)	13(330)	6	120,000	105,000
GXHPR4	48(1219)	27-1/4(794)	13(330)	8	160,000	140,000

Many local codes exist and it is the responsibility of the owner and installer to comply with those codes.

Garland/U.S. Range products are not approved or authorized for home or residential use, but are intended for commercial applications only. Garland / U.S. Range will not provide service, warranty, maintenance or support of any kind other than in commercial applications.

Shipping Information		
Model#	Weight Lb/Kg	Cu Ft
GXHPR2	138/61	8.0
GXHPR3	191/87	25.0
GXHPR4	247/112	33.0

Manifold Operating Pressure All Models			
Natural Gas		Propane	
"WC	Mbar	"WC	Mbar
5	12.5	10	25



Form# GXHPX (06/07)