



Item #: _____
 Models: CG- __RFB Series (24,36,48,60)
 Product Name: Master Production Griddle
 Gas Type: Natural Propane

GARLAND® GAS Master Production Griddle Models: CG-__RFB, (24,36,48,60)



*Model CG-48RFB
 (shown w/optional stand & casters)*

Specification:

Heavy duty gas griddles (available in four sizes, 24", 36", 48", and 60"). High performance volume production with even, consistent, controlled temperatures. 1"(25mm) thick griddle plate. Electronic thermostat with imbedded sensor and efficient 'U' shaped burner every 12"(205mm) of griddle width. All stainless steel exterior. Full width front rail. 6" (152mm) legs standard or optional stand available.

Standard Features:

- Rear grease trough with front rail
- 1" (25mm) polished finish steel plate
- One "U" shaped 30,000 BTU (8.8kW) burner every 12" (305mm) of griddle width
- Controls 120V, 60Hz
- Electric main on/off power switch w/indicator light
- Electric on/off switch for each thermostat burner system, also has indicator light
- Electronic thermostat 150°F (101°C) to 450°F (268°C) for each burner every 12" (305mm)
- Gas pilot ignition indicator light
- Stainless steel sides
- Stainless steel valve panel
- Stainless steel backguard
- Stainless steel grease trough
- Stainless steel side griddle splashguards
- Stainless steel 6" (152mm) deep, sloped grease drawers with integral grease baffle
- 6" (152mm) high stainless steel adjustable legs
- Nickel plated thermostat guards
- Gas regulator valve
- 8" (203mm) high back splash
- Contoured grease chute opening

Optional Features: (No additional charge)

- 10-1/2" (267mm) deep grease drawers (Stand Models Only)

Optional Features: (Additional charge)

- Stainless steel open stand, 30.292" (769mm) high with stainless steel bottom shelf on adjustable legs
- Set of (4) casters, all swivel, front locking, for the stand
- Protective shield for controls

NOTE: Griddles supplied with casters must be installed with an approved restraining device.



Garland Commercial Industries, Inc.
 185 East South Street
 Freeland, Pennsylvania 18224
 Phone: (570) 636-1000
 Fax: (570) 636-3903

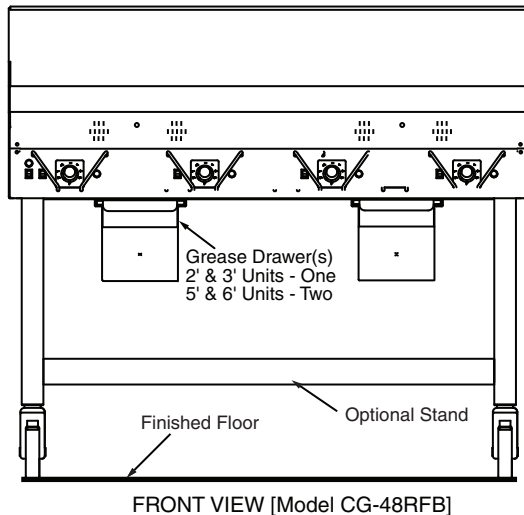
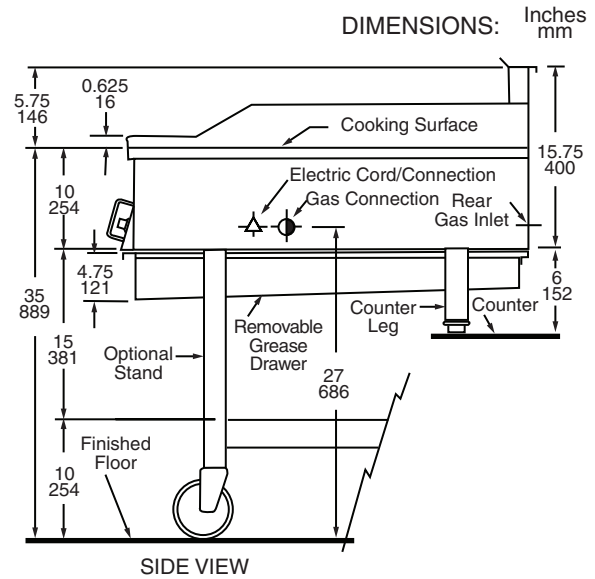
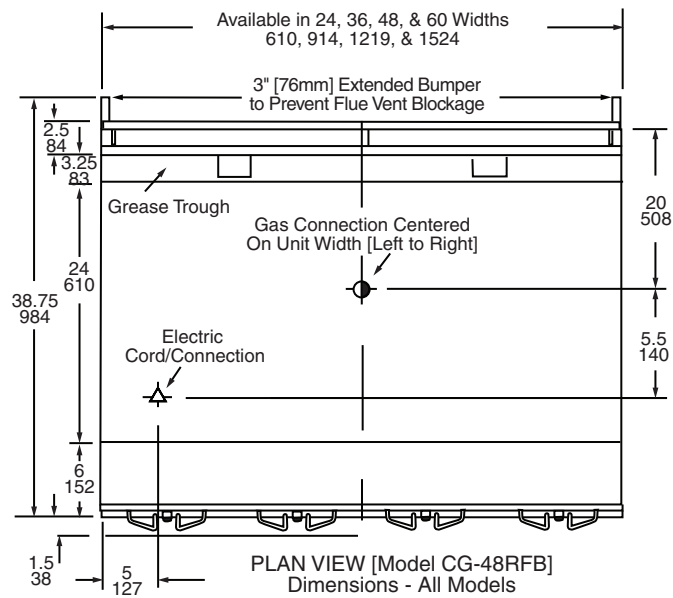
Garland Commercial Ranges Ltd
 1177 Kamato Road, Mississauga, Ontario
 L4W 1X4 CANADA
 Phone: 905-624-0260
 Fax: 905-624-5669

Enodis UK LTD
 Swallowfield Way, Hayes, Middlesex
 UB3 1DQ ENGLAND
 Telephone: 081-561-0433
 Fax: 081-848-0041



Item #: _____
 Models: CG-__RFB Series (24,36,48,60)
 Product Name: Master Production Griddle
 Gas Type: Natural Propane

INSTALLATION NOTES		SPECIFY GAS TYPE		ELECTRICAL CHARACTERISTICS
Combustible Wall Clearances		Operating Pressure		Specifications
Sides: 6" (152mm)	Back: 6" (152mm)	Natural: 7" W.C. (17.4mbar)	Propane: 11" W.C. (24.4mbar)	120 V, Single Phase, 60Hz, 1 amp 6' (1829mm) power supply cord provided
<ul style="list-style-type: none"> IMPORTANT: Unit must be installed on legs for proper air circulation. 		<ul style="list-style-type: none"> Gas Input Ratings shown are for installations up to 2,000 feet (610mm) above sea level. BTU input ratings must be derated for high altitude installations 		<ul style="list-style-type: none"> NOTE: No cord and plug on export units. Direct connection on junction box.
ENTRY CLEARANCE		This product must be installed by professional personnel as specified. Garland/U.S. Range products are not approved or authorized for home or residential use, but are intended for commercial applications only. Garland / U.S. Range will not provide service, warranty, maintenance or support of any kind other than in commercial applications.		
Crated	Uncrated			
40" (1016mm)	38" (965mm)			
<ul style="list-style-type: none"> See illustration for further specifications & size statistics 				



Model Number	BTU/HOUR	Kw	Gas Inlet	Shipping Weight
				Lbs./Kgs.
CG-24RFB	60,000	17.60	3/4"	335/152
CG-36RFB	90,000	26.40	3/4"	485/220
CG-48RFB	120,000	35.00	3/4"	625/284
CG-60RFB	150,000	44.00	3/4"	765/348