



# Air Deck

## Electric Deck Ovens

Item: \_\_\_\_\_

Quantity: \_\_\_\_\_

Project: \_\_\_\_\_

Approval: \_\_\_\_\_

Date: \_\_\_\_\_

Air Deck Electric Deck Ovens

Models:

E56PB

E56PT

E56PT/B



Model E56PT

### Standard Features:

- Stainless steel front, sides, top, and legs
- Porcelainized control panel
- Full deck-width, balanced spring-loaded door
- Stainless steel perforated deck
- Adjustable legs
- Electronic ignition
- Snap action thermostat (550° F/ 288° C max.)
- Bakes w/air impingement – top & bottom
- Heat control damper system
- 15 Kw element package
- Single speed fan with 3/4 HP motor
- Deck surface – 55.5" (1410mm) W x 35.75" (908mm) D
- Floor space – 63" (1600mm) W x 45" (1143mm) D
- Door opening – 53" (1346mm) W x 7-1/2" (190mm) H
- 1 Year limited parts & labor warranty, (USA & Canada only)

### Optional Features:

- Stainless steel main back

## AIR DECK

### Specifications:

Unique energy delivery system driven by controlled hot air flow designed for high volume operation. Offers minimum preheat time; no recovery time; consistent selected temperatures; high quality production, and menu versatility.



Model E56PT/B

Garland Commercial Ranges Ltd  
1177 Kamato Road,  
Mississauga, Ontario  
L4W 1X4 CANADA

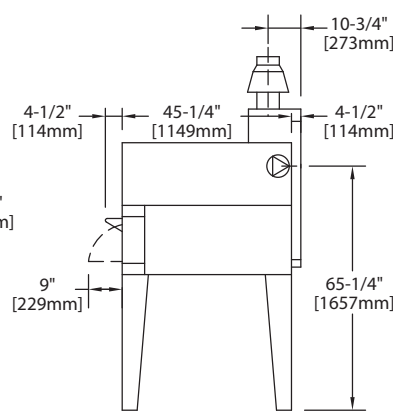
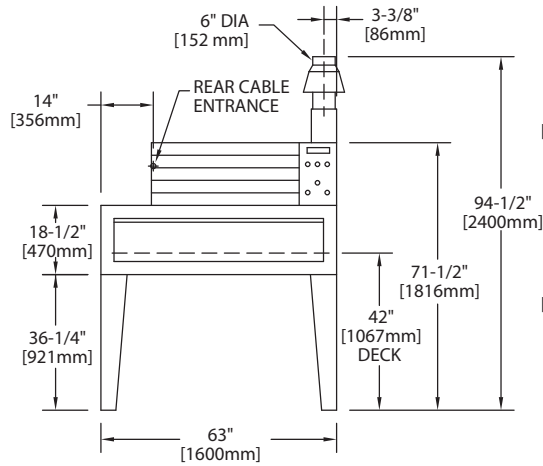
General Inquires 1-905-624-0260  
USA Sales, Parts and Service 1-800-424-2411  
Canadian Sales 1-888-442-7526  
Canada or USA Parts/Service 1-800-427-6668



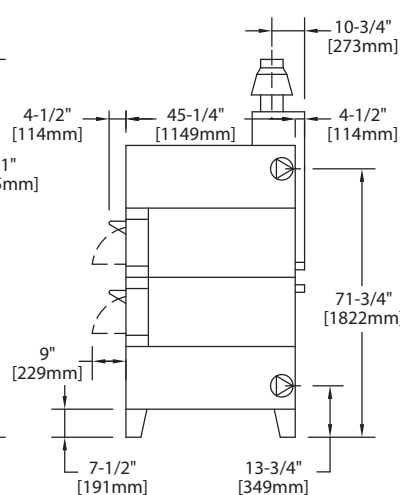
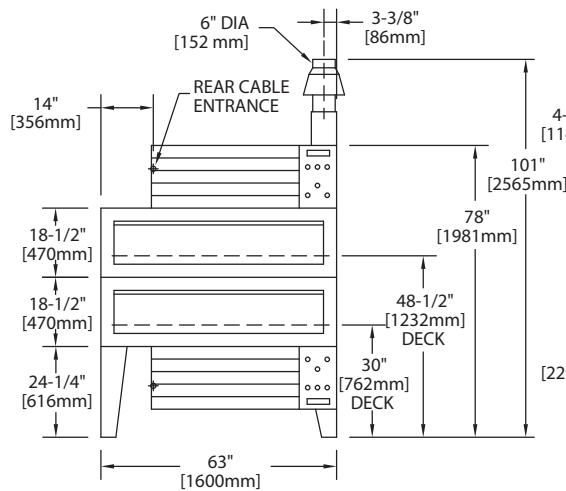
Model	Total Loading	Nominal Amperes Per Line								Cu Ft	Shipping Weight Lbs./ Kg
		208V	240V	208V/3Ph			240V/3Ph				
		1Ph	1Ph	X	Y	Z	X	Y	Z		
E56PB	15 kW	72	63	43	39	43	38	36	38	95	1050/477
E56PT	15 kW	72	63	43	39	43	38	36	38	95	1050/477
E56PT/B	30 kW	(2) 72	(2) 43	(2) 43	(2) 39	(2) 43	(2) 38	(2) 36	(2) 38	190	2100/954

Model	Deck: in(mm)			Pizza Capacity
	No.	Width	Depth	
E56PB	1	55.5(1410)	35.75(908)	6(18")
E56PT	1	55.5(1410)	35.75(908)	6(18")
E56PT/B	2	55.5(1410)	35.75(908)	12(18")

Combustible Wall Clearance:		Oven Door Openings	
		Width	53-1/4" (1353mm)
		Height	7-1/2" (190mm)
Sides	6" (152mm)	Entry Clearances	
Back	6" (152mm)	Crated	45" (1143mm)
Base	8" (203mm)	Uncrated	35-1/2" (902mm)



Deck with top power module and Direct Connect Venting



Deck (1) top power module (1) bottom power module and Direct Connect Venting

Form# E56PB (07/22/11)