

### Kit Contents:

|                |   |                    |                           |
|----------------|---|--------------------|---------------------------|
| Part # 2487000 | Relay (1)                               | Wire Dwg No G03302 | 208-240 Service           |
| Part # 8003204 | 6-32 x ½ Inch Bolt (2)                  | Wire Dwg No G03322 | 208/380 – 240/415 Service |
| Part # 8001209 | 6-32 Fin Hx Nut (2)                     |                    |                           |
| Part # 8000333 | .190 x .375 Washer (2)                  |                    |                           |
| Part # 1030022 | 10/12 Ga .250 Faston Wire Connector (1) |                    |                           |

1. **Disconnect all power from oven.** See page 3 for Relay Replacement Kit Contents.
2. Pull control panel (Figure 1) forward to access breaker cover panel (Figure 2).



Figure1

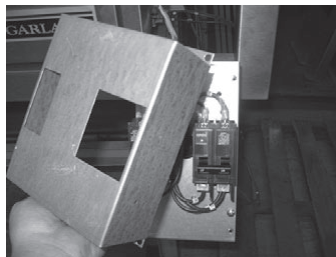


Figure 2

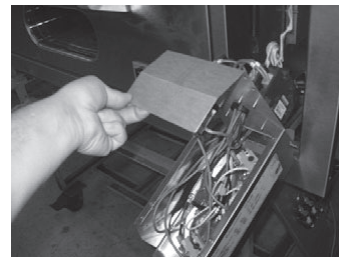


Figure 3

3. Remove breaker cover panel (Figure 2) and breaker back panel plate (Figure 3).
4. Remove existing failed relay and mounting bracket by drilling the two rivets where the mounting bracket is attached to the side of control panel front cover.
5. Mark and drill new relay mounting holes (5/32 Dia.) identified as holes (E) on Partial Hole Chart Drawing (Page 2).
6. Install new relay and connect wiring as Shown in Figure 4 and the included revised wire diagram (G03302 Rev.2 or G03322 Rev.1) The new relay requires a four wire connection. The fourth connection is accomplished by creating a jumper wire out of the wire identified to connect to terminal 6 of the new relay. Cut existing wire approximately 2.5 inches from existing connector as shown in figure 5. Strip 1/4 inch insulation from both cut wire ends and insert and crimp in wire connector furnished with the kit, as shown in figure 6. The new wire connector should go to terminal 6 of the new relay and the jumper section will connect to terminal 1 of the new relay. Finish wiring by connecting the appropriate wires to terminals 0 and 4 as shown on included wire diagram for unit being serviced.

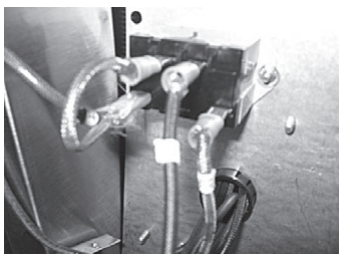


Figure4



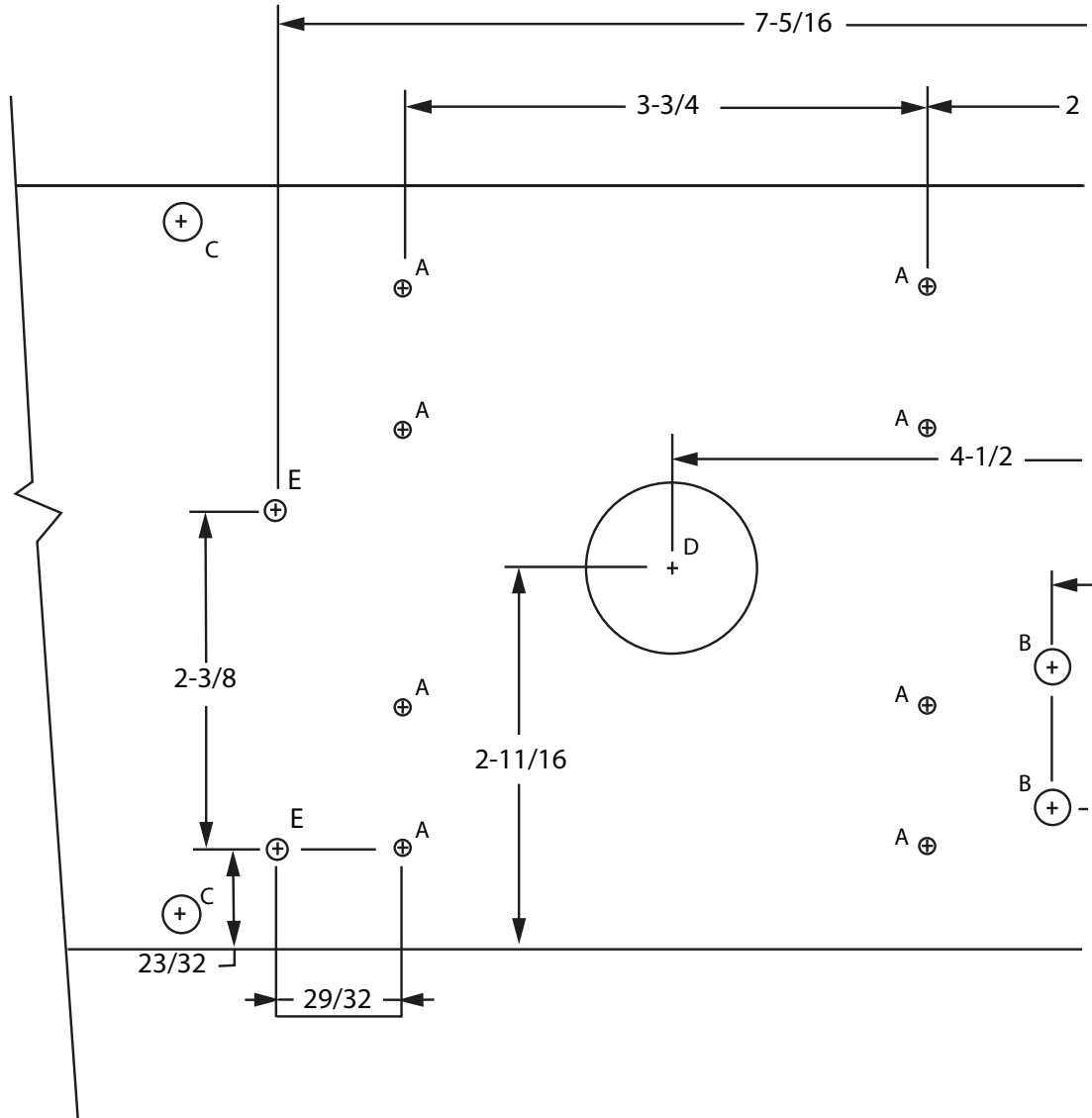
Figure 5



Figure 6

7. Reassemble control panel by reversing steps 1 through 3 and test oven operation.

## Partial Hole Chart Drawing



|     |          |     |
|-----|----------|-----|
| E   | 5/32 DIA | 2   |
| D   | 3/16DIA  | 1   |
| C   | 9/32 DIA | 6   |
| B   | 1/4 DIA  | 2   |
| A   | 1/8 DIA  | 9   |
| SYM | SIZE     | QTY |

HOLE CHART