



400 Watt

Fondant Warmer

Item: EFW400

Quantity: _____

Project: _____

Approval: _____

Date: _____

400 Watt Fondant Warmer

Models:

EFW400



Model EFW400

Specification:

Durable, easy-to-use counter, (wet use only), Garland Fondant Warmer, model EFW400. Electrical rating: 115VAC, 400 Watts (120VAC, 420 Watts). Illuminated On/Off power switch and 5-foot, (1524mm) power cord with plug. Preset, 140°F thermostat with high-limit safety cut-off for worry-free operation. Stainless steel construction. Overall dimensions: 13-1/2" wide x 11-1/8" deep x 7-3/4" high, (343mm x 283mm x 197mm). CSA, NSF approved.

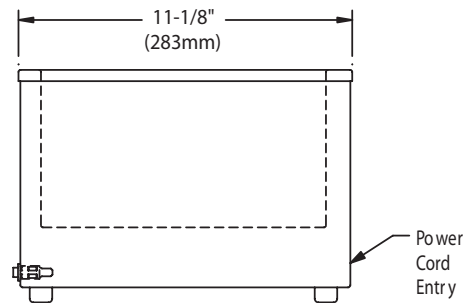
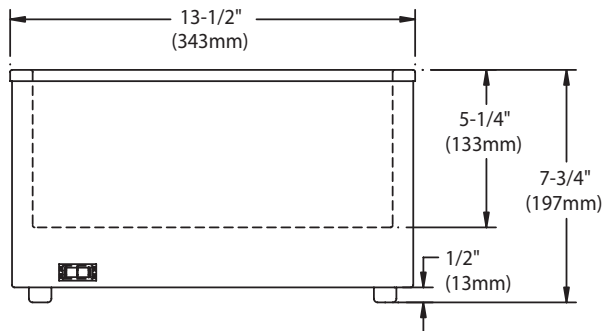
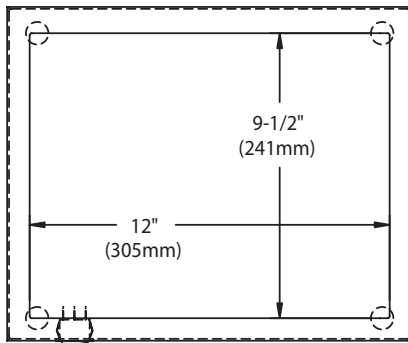
Standard Features:

- Illuminated On/Off power switch
- Built-in, preset thermostat with high-limit control
- Stainless steel construction inside and outside
- 5-foot, (1524mm), power cord with plug
- Pan capacity: (2) one-fourth size pans, (1) one-half size pan (maximum pan depth: 4")



Voltage	Phase	kW	Nominal Amperes	Connection Type
120	1	0.42	3.5	5' cord w/NEMA 5-15P plug

Clearances				Shipping Weight
Installation		Entry		
Sides	Rear	Crated	Uncrated	
0"	0"	13-1/2" (343mm)	11-1/8" (283mm)	14lbs. (6.4kg)



Garland products are not approved or authorized for home or residential use, but are intended for commercial applications only. Garland will not provide service, warranty, maintenance or support of any kind other than in commercial applications.

Form# EFW400 (03/30/11)