



# Induction Built In Wok

Item: \_\_\_\_\_  
 Quantity: \_\_\_\_\_  
 Project: \_\_\_\_\_  
 Approval: \_\_\_\_\_  
 Date: \_\_\_\_\_

Induction Built In Wok

### Models:

- GIU-3.5 BI (SH/WO/IN 3500)     GIU-5.0 BI (SH/WO/IN 5000)



### Installation Notes:

The unit is designed to be installed into a counter. An integral cooling fan keeps the electronics cool. Garland offers an optional air intake kit, recommended for all enclosed installations. The unit takes cooling air in from the bottom, and discharges from both sides. The optional air intake kit connects directly to the unit. A minimum of 30 sq. inch (19.34 sq. cm) opening for the exhaust must be allowed for proper operation in the design of the cabinet.

### Standard Features:

- Drop-in, flush mounted design with stainless steel body below counter bowl to accept wok pan
- Remote control and indicator light mounted on a control panel plate with a 3 foot (914mm) cable
- Integral cooling fan keeps electronics cool and provisions must be made to allow for air intake and exhaust when mounted in a counter
- 6' (1829mm) cord and plug supplied (60 cycle units only)
- "Flat Design", compact high performance electronics
- Thermostatically controlled overheat sensor shuts the unit off preventing damage from pans cooking dry
- Instant energy transmission to the pan
- Induction technology transfers heat to the pan, not to the surrounding air
- Innovated new technology for pan detection; RTCS (Real Time Temperature Control System) is an internal control software development matching speed, capability and performance
- Electronic output limitation continually monitors the energy transfer to the pan, helping to ensure the most efficient energy transfer possible
- Available in either 3.5 kW or 5.0 kW

### Options & Accessories

- High quality induction stainless steel wok pan; 5.2 liter for 3.5 kW and 9.1 liter for the 5.0 kW unit

### Specifications:

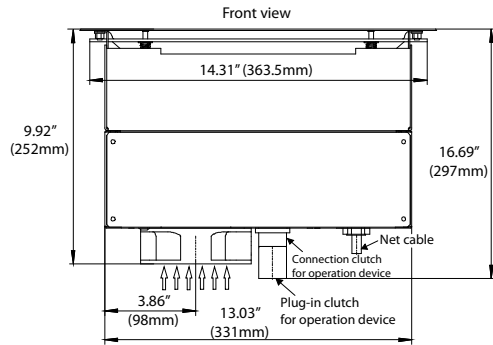
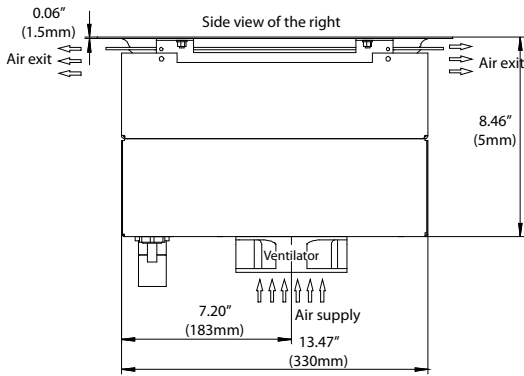
Shall be a Garland Single Drop-In Induction Wok, model GIWOK-3.5BI with a total kilowatt rating of 3.5kW or model GIWOK-5.0BI with a total kilowatt rating of 5.0 kW. Drop in mounts flush with counter, built with a robust stainless steel casing with ceran ceramic glass bowl to accept an induction rounded pan. Compact powerful electronic system for years of reliable service. Overheat sensors help prevent damage if pan is run dry. Easy to operate system supplied with remote rotary mounted control. Unit to come with integral cord and plug for 208V or 240V (specify at time of order), 60 Hz, single phase

Note: Induction cooking requires magnetic pots and pans to work effectively.



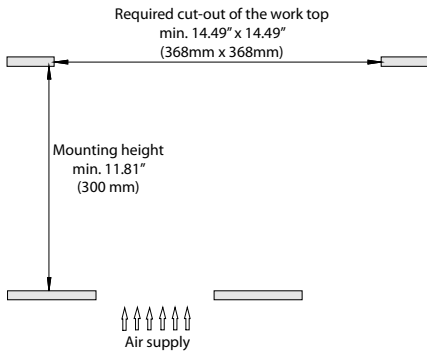
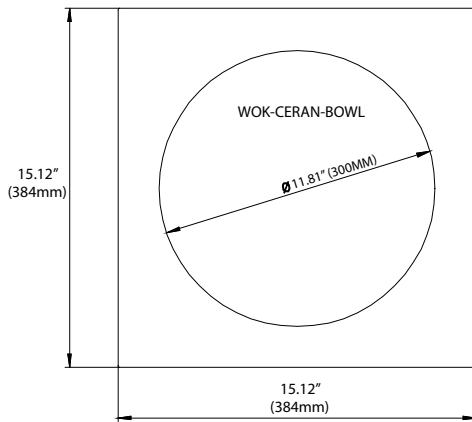
Conforms to UL-197 & NSF-4  
 Certified to CAN/CSA  
 C22.2 NO. 109 VDE EN60335-2-38



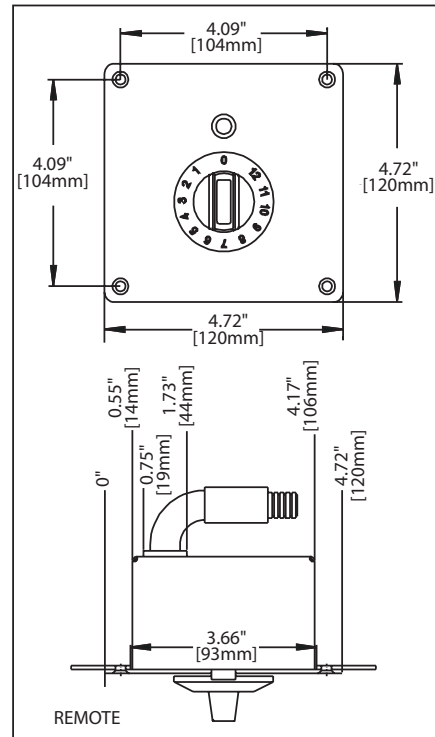


### Plug Configurations:

Model	Electrical Characteristics	Plug
GIWOK-3.5 BI	208V/60Hz/1Ø 240V/60Hz/1Ø	 NEMA 6-20P
GIWOK-5.5 BI	208V/6Hz/1Ø	 NEMA 15-20P



Electrical Loading:				
Model	Watts	208/60/1	208/60/3	240/60/1
GIWOK-3.5 BI	3500	16 amp	N/A	14 amp
GIWOK-5.0 BI	5000	N/A	14 amp	N/A



Form# GIU-3.5/5.0 BI (SH/WO/IN 3500/5000) (03/31/11)