



S280 Sentry Series Range-Match Fryers

Item: _____
 Quantity: _____
 Project: _____
 Approval: _____
 Date: _____

S280 Sentry Series Range-Match Fryers

Models:

- S35-280SC S680-18FM S680-18FM-EH



MODEL S35-280SC

Standard Features:

- Stainless steel front & sides
- 10" (254mm) high stainless steel backguard with slotted black enameled angled cap.
- Stainless steel frypot
- Twin baskets
- 6" (152mm) chrome legs with adjustable stainless steel inserts
- Open pot design for easy cleaning
- Deep cold zone, keeping contaminants out of cooking area
- Compatible with both S and ST Series products
- Centre line thermostat accurate to 1°
- Piezo spark ignition
- 100% safety system
- Multiple orifice burners, 110,000 BTU (32.2 kW)

- Gas regulator North America only
- Natural or propane gas, please specify

Optional Features:

- Stainless steel fryer cover
- Fish plate
- Extra set of twin baskets
- Large single basket
- Swivel casters(4) w/front brakes
- 6" (152mm) stainless steel adjustable legs
- Flanged feet
- Matching Fry Station with, model S680-18F-EH, or with out ,model S680-18F, heat lamp, specify
- Solid stainless steel work top Model S680-18F only

NOTE: Fryers supplied with casters must be installed with an approved restraining device.

Specification:

Medium duty range match fryer, model S35-280SC, 110,000 BTU (32.2 kW) multiple orifice Starfire burners, with centre line thermostat accurate to 1°. Natural or propane gas. 30 lb (15 litre) to 40 lb (20 litre) capacity stainless steel open design frypot with life time warranty. 16" (406mm) wide; stainless steel front, door, cabinet, and back guard with louvered black porcelain enameled sloped backguard cap to match the S280 series ranges. 12" (305mm) x 15" (381mm) frying area with large heat transfer area and deep cold zone. Matching 18" (457mm) wide fryer station with stainless steel 12" (305mm) x 20" (508mm) x 2-1/2" (61mm) cafeteria pan, with (Model S680-18FM-EH) or without (Model S680-18FM) heat lamp, cabinet base. Solid stainless steel work top available on Model S680-18FM.



MODEL S680-18F-EH

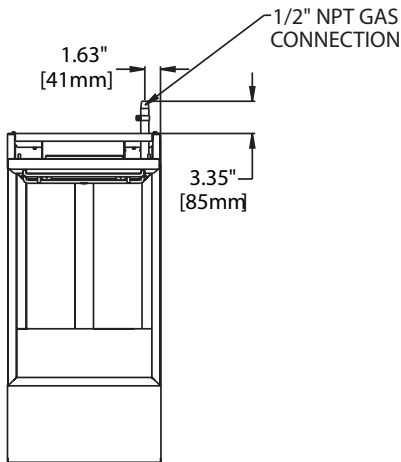
Garland Commercial
 Industries, LLC
 185 East South Street
 Freeland, PA 18224
 Phone: (570) 636-1000
 Fax: (570) 636-3903

Garland Commercial Ranges Ltd
 1177 Kamato Road,
 Mississauga, Ontario
 L4W 1X4 CANADA
 Phone: 905-624-0260
 Fax: 905-624-5669



MODEL	Exterior Dimensions			Installation Clearances		Shipping	
	Height	Width	Depth	Sides	Rear	Cu Ft	lb/Kg
S35-280SC	46 5/8" (1184mm)	16" (406mm)	34-3/8" (873mm)	6" (152mm)	6" (152mm)	24	210/95
S680-18F	46 5/8" (1184mm)	18" (257mm)	34-3/8" (873mm)	0"	0"	16	105/48
S680-18F-EH	56 5/8" (1438mm)	18" (257mm)	34-3/8" (873mm)	0"	0"	16	130/49

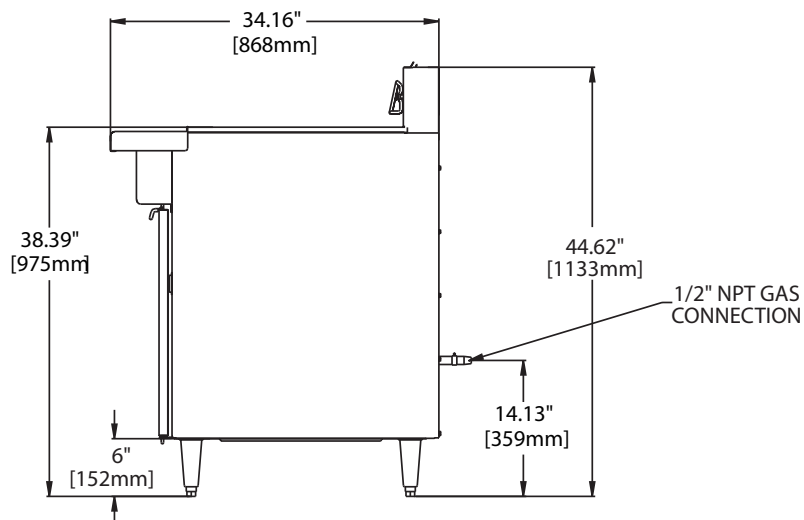
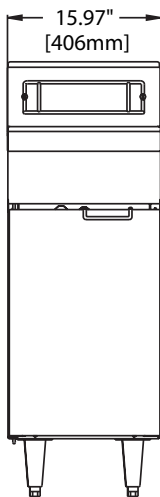
MODEL	Total Input Rating (Natural & Propane Gas)		Operating Pressure "WC/ mbar		Gas Inlet
	BTU	kW	Natural	Propane	
S35-280SC	110,000	32.2	7/17	11.0/27.5	3/4"



NOTE: Installation clearance reductions are applicable only where local codes permit.

When ordering specify gas type, natural or propane and elevation if over 2,000 ft (610m).
Data applies to North America only

Garland products are not approved or authorized for home or residential use, but are intended for commercial applications only. Garland will not provide service, warranty, maintenance or support of any kind other than in commercial applications.



Form# S35-280SC/S680-18FM (02/16/09)