



H280 Series Range-Match Fryers

Item: _____
 Quantity: _____
 Project: _____
 Approval: _____
 Date: _____

H280 Series Range-Match Fryers

Models:

H35-280SC

FS-H35-280

FS-H35-280FWHI



MODEL H35-280SC

Standard Features:

- Stainless steel front & sides
- Stainless steel frypot
- Low profile backguard
- Centre line thermostat accurate to 1°
- Twin baskets
- 6" (152mm) chrome legs with adjustable stainless steel inserts
- Open pot design for easy cleaning
- Deep cold zone, keeping contaminants out of cooking area
- Gas regulator North America only
- Multiple orifice burners, 110,000 BTU (32.2 kW)

- Natural or propane gas, please specify

Optional Features:

- Stainless steel fryer cover
- Fish plate
- Extra set of twin baskets
- Large single basket
- Swivel casters w/front brakes (4)
- 6" (152mm) stainless steel adjustable legs
- Flanged feet
- Matching Fry Station with, model FS-H35-280FWHI, or with out ,model FS-H35-280, heat lamp, specify

NOTE: Fryers supplied with casters must be installed with an approved restraining device.

Specification:

Medium duty range match fryer, model H35-280SC, 110,000 BTU (32.2 kW) multiple orifice Starfire burners, with centre line thermostat accurate to 1°. Natural or propane gas. 30 lb (15 litre) to 40 lb (20 litre) capacity stainless steel open design frypot with life time warranty. 16" (406mm) wide; stainless steel front, door, and cabinet, low profile stainless steel backguard, to match the H280 Series ranges. 12" (305mm) x 15" (381mm) frying area with large heat transfer area and deep cold zone. Matching 18" (457mm) wide fryer station with stainless steel 12" (305mm) x 20" (508mm) x 2-1/2" (61mm) cafeteria pan, with (Model FS-H35-280FWHI) or without (Model FS-H35-280) heat lamp, cabinet base.



MODEL FS-H35-280FWHI

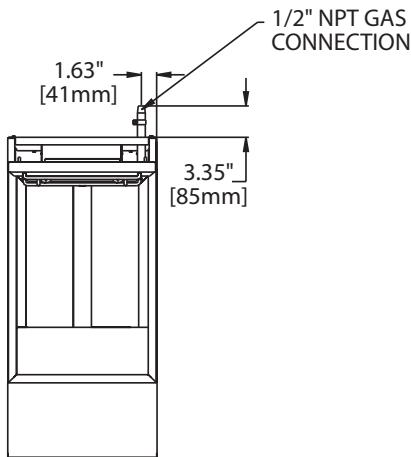
Garland Commercial Industries, LLC
 185 East South Street
 Freeland, PA 18224
 Phone: (570) 636-1000
 Fax: (570) 636-3903

Garland Commercial Ranges Ltd
 1177 Kamato Road,
 Mississauga, Ontario
 L4W 1X4 CANADA
 Phone: 905-624-0260
 Fax: 905-624-5669

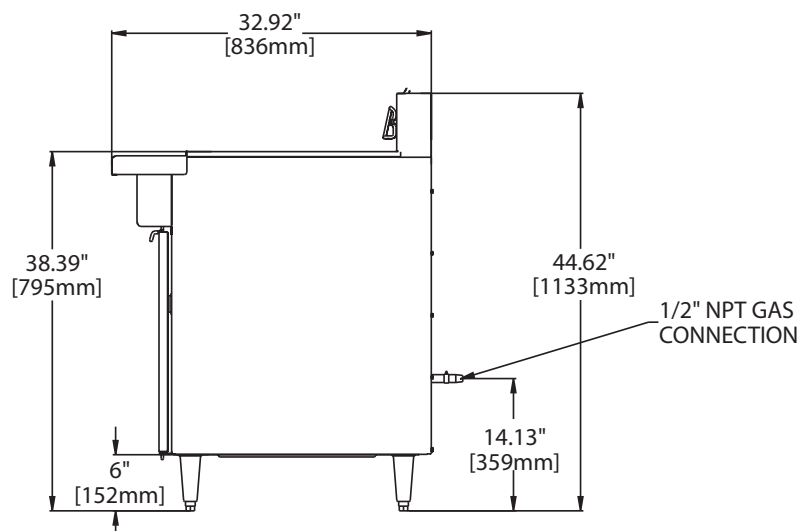
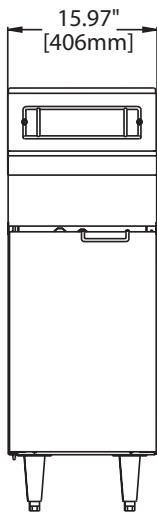


MODEL	Exterior Dimensions			Installation Clearances		Shipping	
	Height	Width	Depth	Sides	Rear	Cu Ft	lb/Kg
H35-280SC	44 5/8" (1133mm)	16" (406mm)	33" (838mm)	6" (152mm)	6" (152mm)	24	210/95
FS-H35-280	44 5/8" (1133mm)	18" (457mm)	33" (838mm)	0"	0"	16	135/61
FS-H35-289FWHI	54 5/8" (1387mm)	18" (457mm)	33" (838mm)	0"	0"	16	140/64

MODEL	Total Input Rating (Natural & Propane Gas)		Manifold Operating Pressure "WC/mbar		Gas Inlet
	BTU	kW	Natural	Propane	
H35-280SC	110,000	32.2	7/17	11.0/27.5	3/4"



Data applies to North America only
 Garland products are not approved or authorized for home or residential use, but are intended for commercial applications only. Garland will not provide service, warranty, maintenance or support of any kind other than in commercial applications.



Form# H35-280SC/FS-H35-280 (02/16/09)