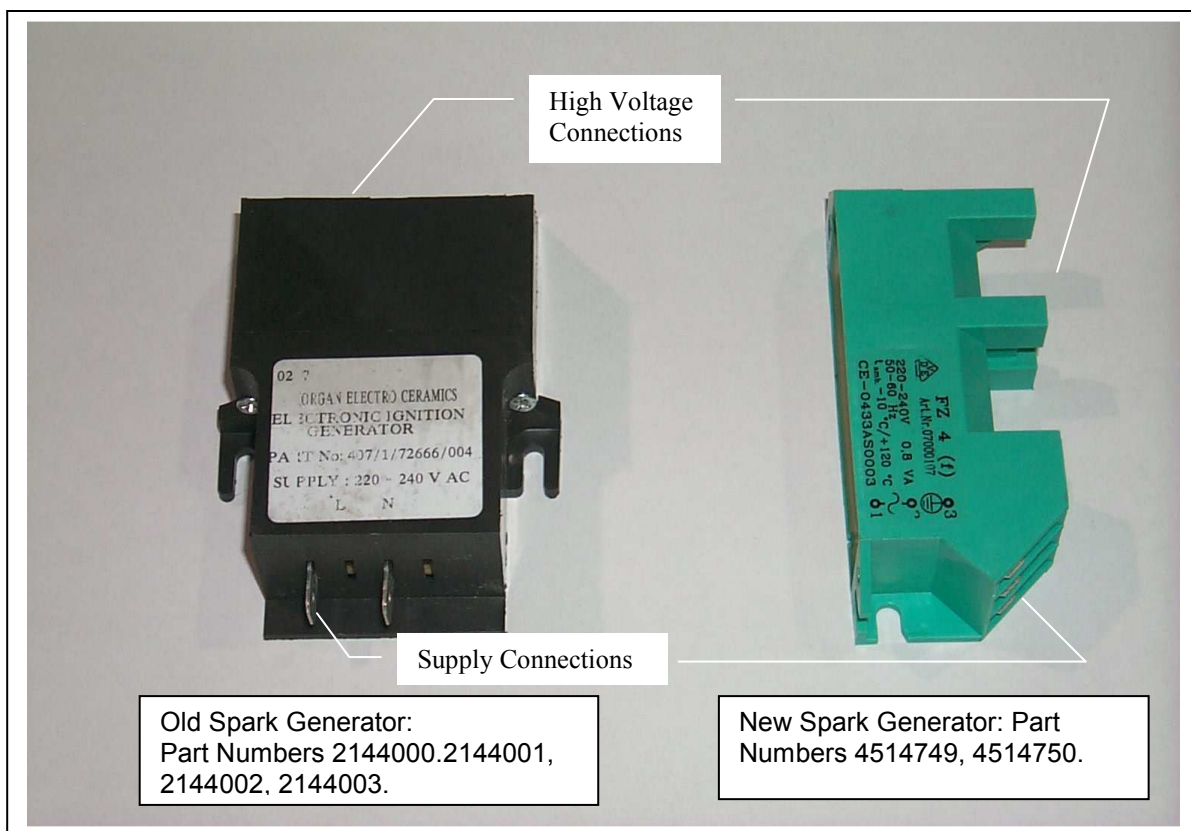


Instructions for Spark Generator Replacement Kits 4515817, 4515818

Part Number 4515817: Kit, Spark Generator 120V replaces part numbers 2144002 (4 outlet) and 2144003 (2 outlet).

Part Number 4515818: Kit, Spark Generator 230V replaces part numbers 2144000 (4 outlet) and 2144001 (2 outlet).



Critical Differences between New and Old Parts

- Physical size and mounting is different.
- Voltage barriers on the new spark generator restrict the supply connection terminal sizes. Receptacle/tab combinations can no longer be used.
- High voltage tabs on the new spark generator are .110" x .032" (2.8mm x .82mm) as opposed to .110" x .020" (2.8mm x .51mm) on the old spark generator.

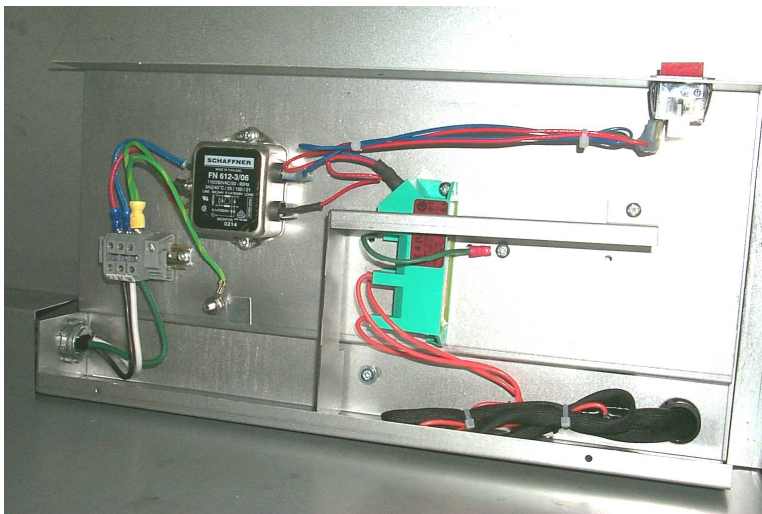
- Only 4 outlet spark generators are now available.

Required Modifications

- Locate and drill new mounting holes. Use drill template instructions.
- Replace high voltage terminal connectors. See figures 1 and 2 on diagram 1.
- Any unused high voltage terminals must be grounded.
- Modify supply connections. See diagram 2.

Spark Generator Replacement Kit Parts List

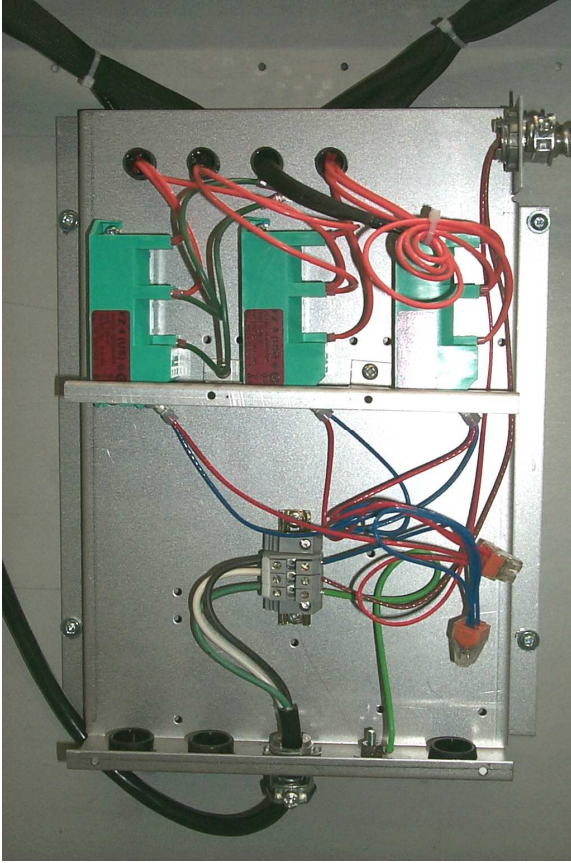
Item	Part Number	Description	Quantity	
			4515817 120 Volt	4515818 230 Volt
1	4514749	Spark Generator, 4 outlet, 230V		1
2	4514750	Spark Generator, 4 outlet, 120V	1	
3	2563601	Wire - #10 Ring: .110 x .032	2	2
4	2562510	Wire - .250 Female : 3/8 Strip, Red, 8"	1	1
5	2562511	Wire - .250 Female : 3/8 Strip, Blue, 8"	1	1
6	4515715	Wire - #10 Ring: .250 Female		1
7	F572	Connector, Female, .110 x .032	4	4
8	F580	4 Connection Wire Splice, 18-12AWG	2	2
9	4516299	Instructions, Spark Generator Kit	1	1



Master Series Storage

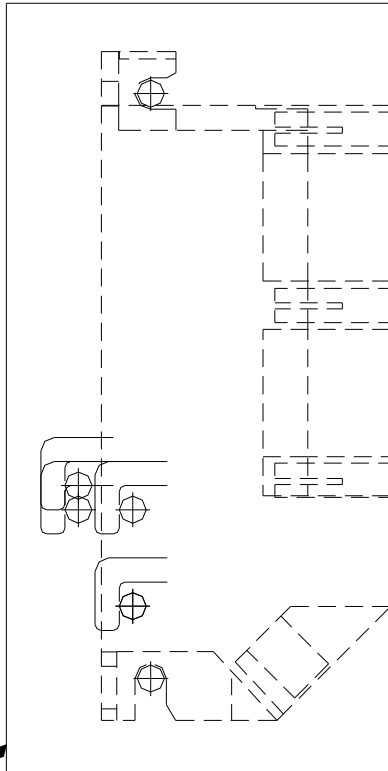


Master Series Range



Sentry Series

Cut out the template below. Locate and drill 2 – 9/64" (3.5mm) diameter holes. Follow the instructions in diagram T4.



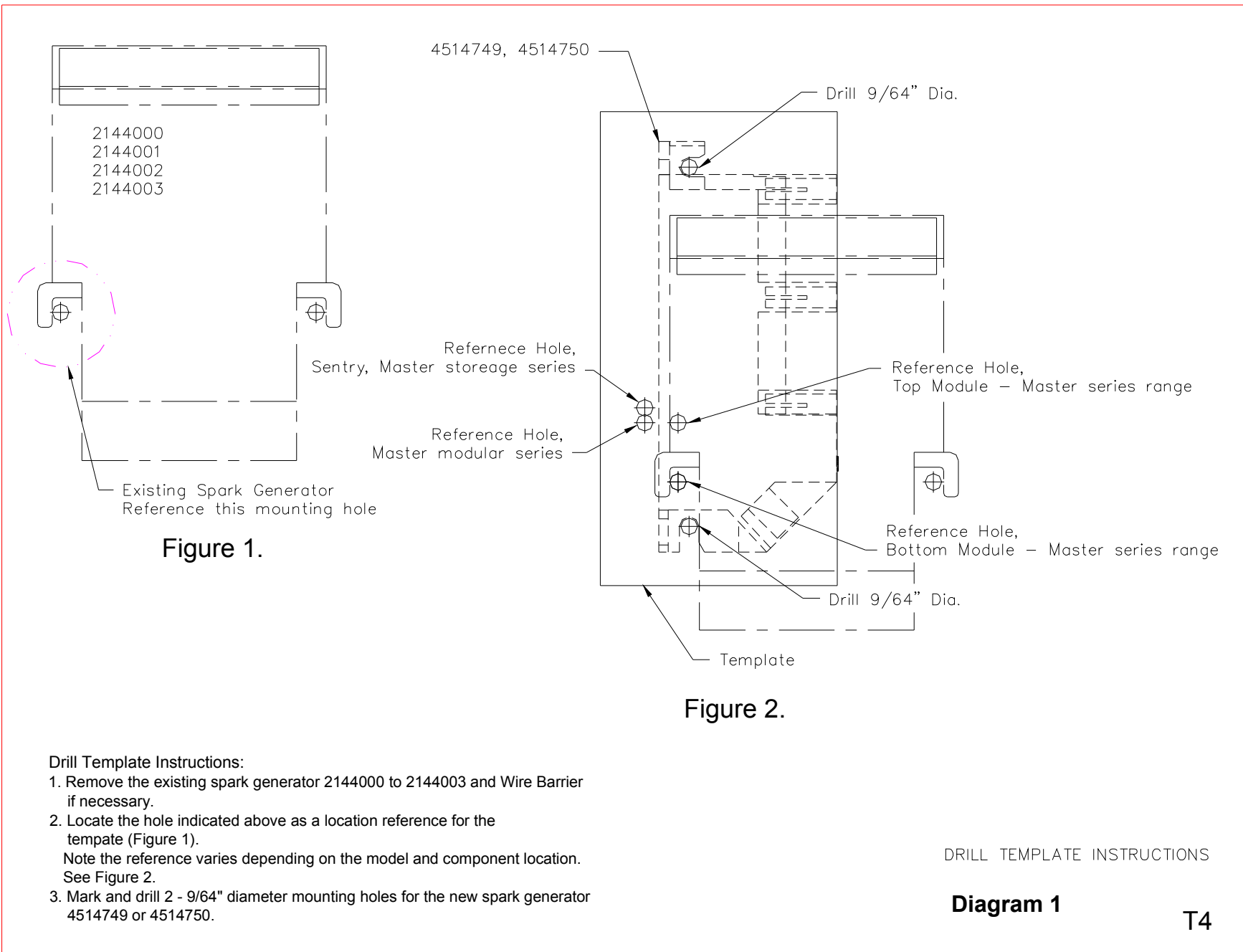


Figure 1.

Figure 2.

Drill Template Instructions:

1. Remove the existing spark generator 2144000 to 2144003 and Wire Barrier if necessary.
2. Locate the hole indicated above as a location reference for the template (Figure 1).
Note the reference varies depending on the model and component location. See Figure 2.
3. Mark and drill 2 - 9/64" diameter mounting holes for the new spark generator 4514749 or 4514750.

DRILL TEMPLATE INSTRUCTIONS

Diagram 1

T4

Rewire the new modules using new terminals (F572) on the high voltage wires and wire splices (F580).

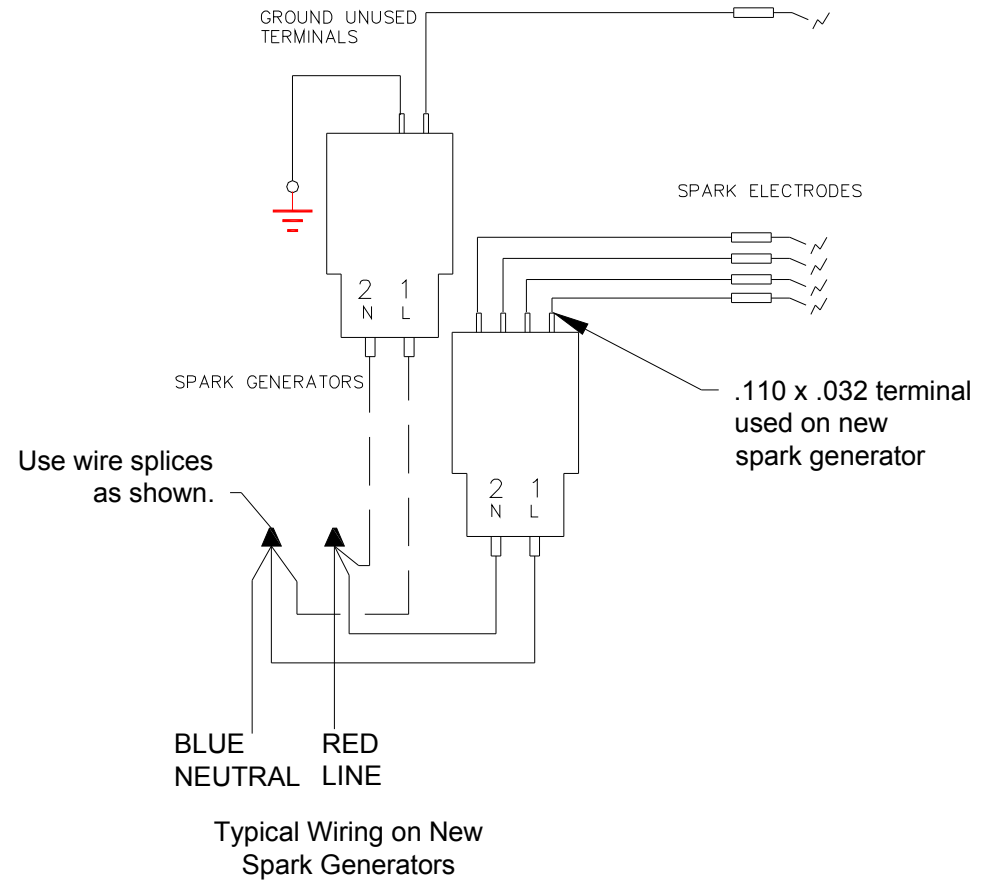
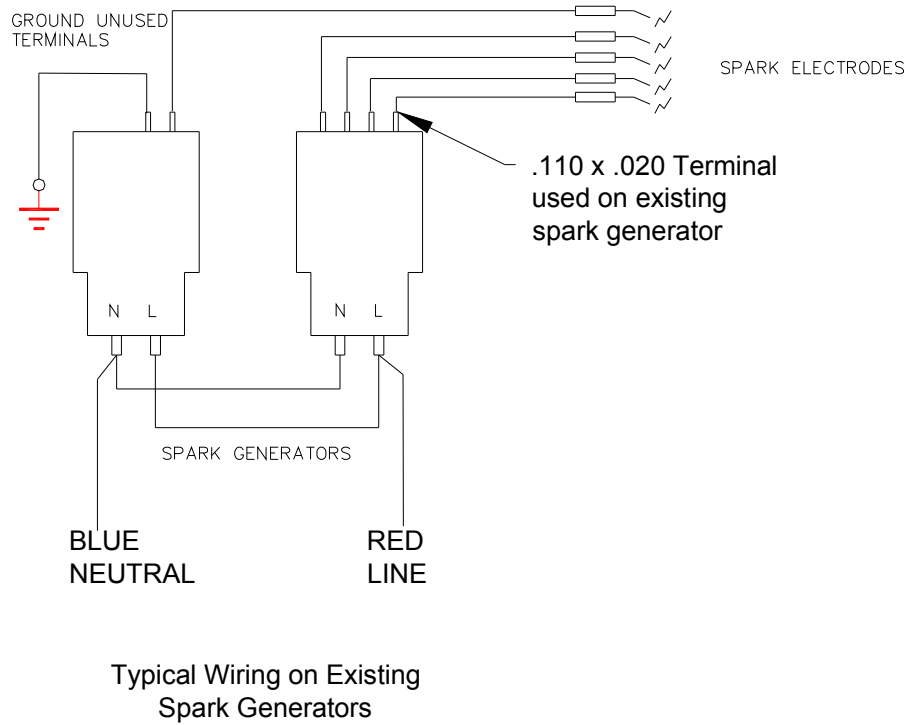


Diagram 2