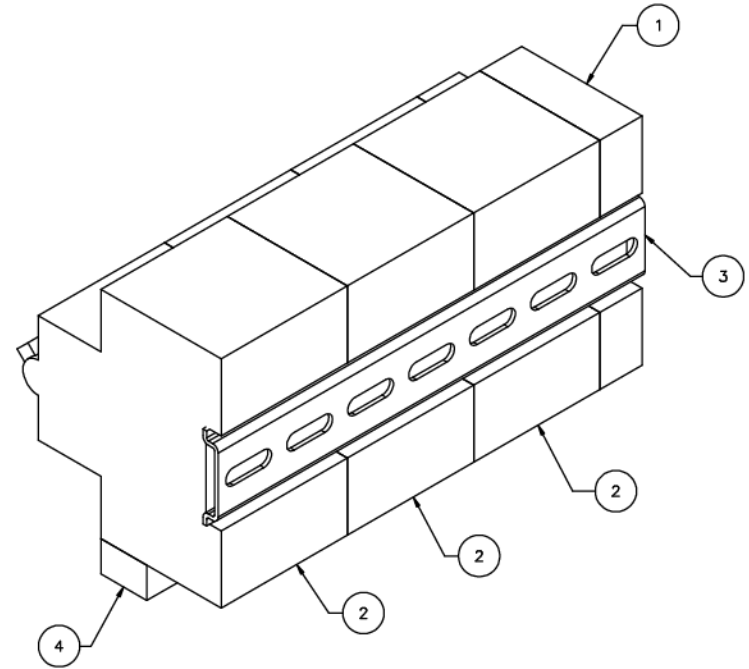
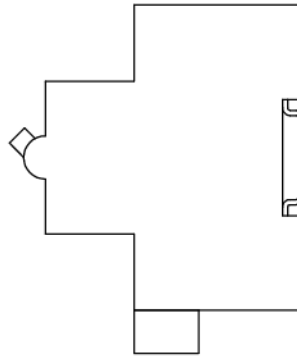
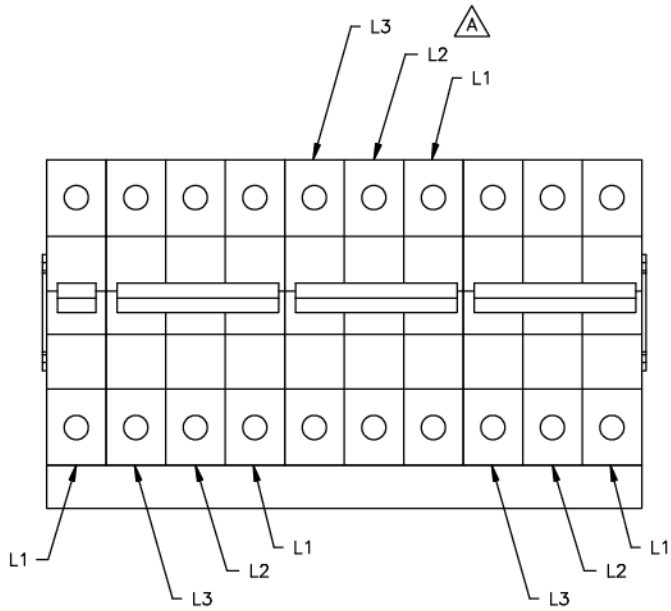
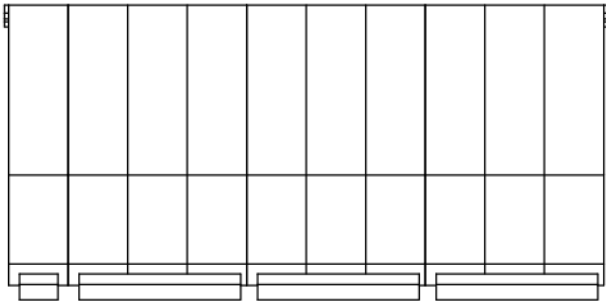


6	4517811	CIRCUIT BRAKER ASSEMBLY	-	0	-
5					
4	4517808	BUS BAR, 7 POLE	-	-	1
3	4517807	DIN RAIL, 5 INCH	-	-	1
2	4516979	CIRCUIT BREAKER, 3 POLE 32 AMP	-	-	2
1	4516980	CIRCUIT BREAKER, 1 POLE 16 AMP	-	-	1
ITEM	PART NUMBER	DESCRIPTION	FINISH	REV	QTY

CIRCUIT BREAKER  
ASSEMBLY

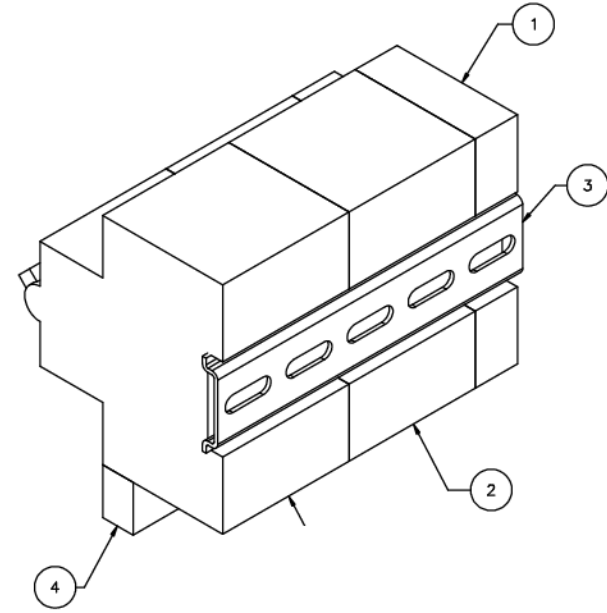
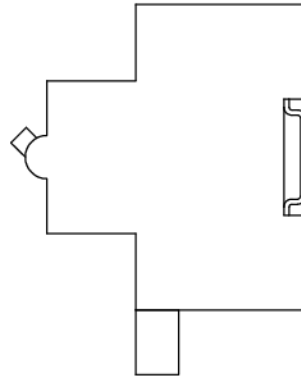
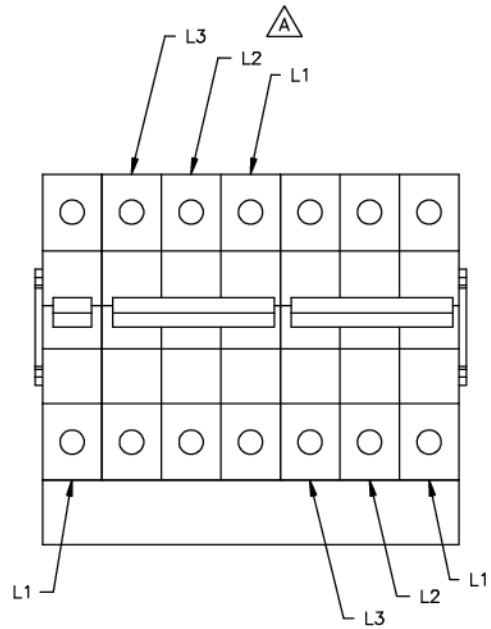
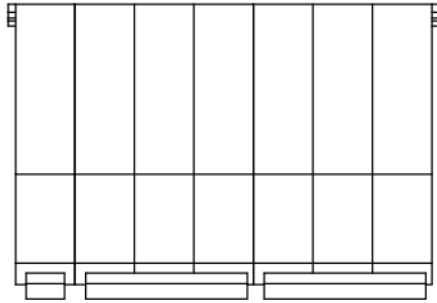
MODEL(S)  
XE24



6	4517812	CIRCUIT BRAKER ASSEMBLY	-	0	-
5					
4	4517810	BUS BAR, 10 POLE	-	-	1
3	4517809	DIN RAIL, 7 INCH	-	-	1
2	4516979	CIRCUIT BREAKER, 3 POLE 32 AMP	-	-	3
1	4516980	CIRCUIT BREAKER, 1 POLE 16 AMP	-	-	1
ITEM	PART NUMBER	DESCRIPTION	FINISH	REV	QTY

CIRCUIT BREAKER  
ASSEMBLY

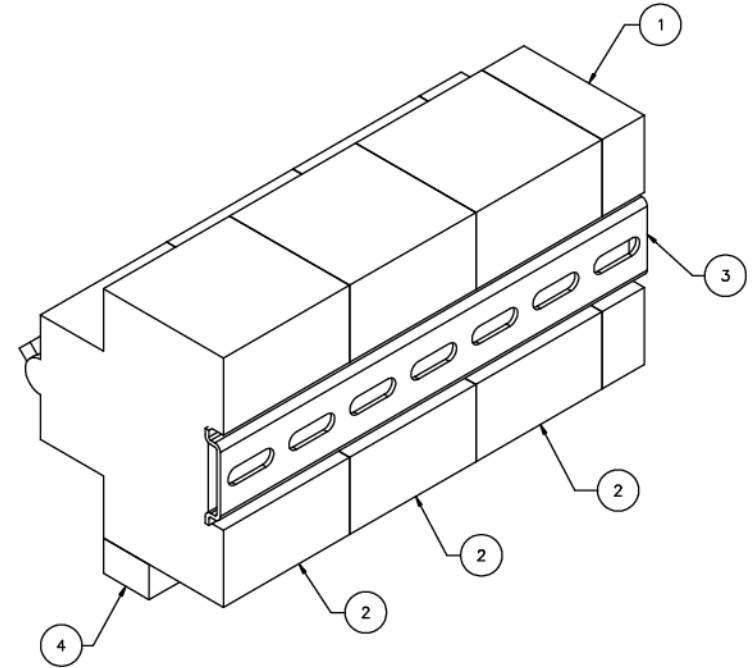
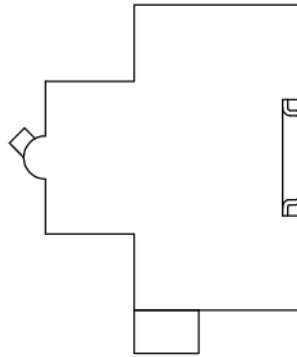
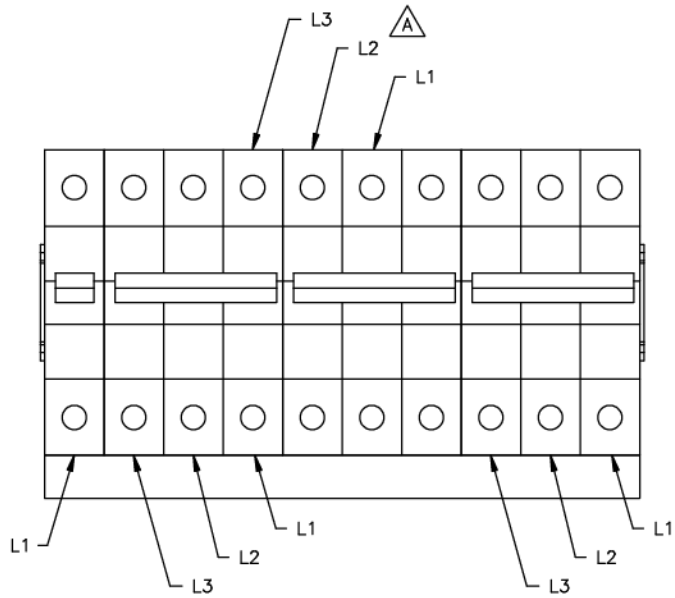
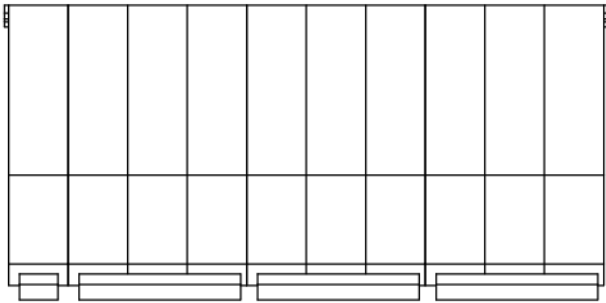
MODEL(S)  
XE36



6	4517813	CIRCUIT BRAKER ASSEMBLY	-	0	-
5					
4	4517808	BUS BAR, 7 POLE	-	-	1
3	4517807	DIN RAIL, 5 INCH	-	-	1
2	4517425	CIRCUIT BREAKER, 3 POLE 16 AMP	-	-	2
1	4516980	CIRCUIT BREAKER, 1 POLE 16 AMP	-	-	1
ITEM	PART NUMBER	DESCRIPTION	FINISH	REV	QTY

CIRCUIT BREAKER  
ASSEMBLY

MODEL(S)  
XG24



6	4517814	CIRCUIT BRAKER ASSEMBLY	-	0	-
5					
4	4517810	BUS BAR, 10 POLE	-	-	1
3	4517809	DIN RAIL, 7 INCH	-	-	1
2	4517425	CIRCUIT BREAKER, 3 POLE 16 AMP	-	-	3
1	4516980	CIRCUIT BREAKER, 1 POLE 16 AMP	-	-	1
ITEM	PART NUMBER	DESCRIPTION	FINISH	REV	QTY

CIRCUIT BREAKER  
ASSEMBLY

MODEL(S)  
XG36