

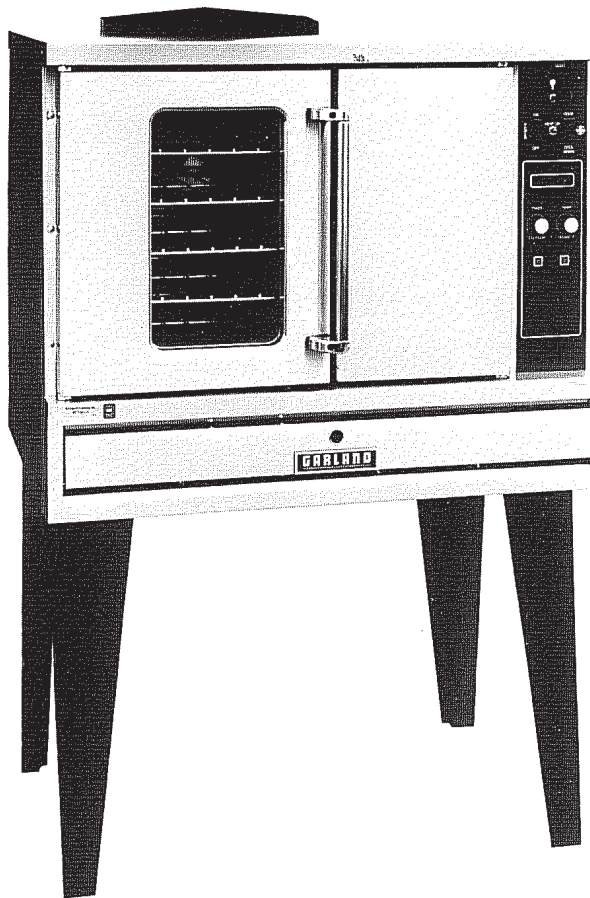
GARLAND

A **WELBILT** Company

Item # _____

TG3; TTG3
Model # TG4; TTG4

Product Name: Convection Oven Gas,
Full-Size



Model TG3 or TG4



Specifications:

General —

Designed as a general purpose oven for roasting, baking and rethermalizing a variety of food products, faster and at lower temperatures by circulating heated air throughout the oven cavity.

Standard Features:

- Electronic Controls which include:
 - Cook Temperature Control with a Range of 140° F (60° C) to 500° F (260° C)
 - Cook Count Down Timer - Max. 12 Hrs.
 - Timer/Temperature Digital Display
- Electronic Ignition
- Total of 80,000 BTU Loading Per Cavity
- Single Speed Fan with 1/3 HP Motor
- Porcelain Enameled Oven Cavity w/Coved Corners
- Stainless Steel Front, Black Baked Enamel Sides, Top, Back and Legs
- 60/40 Door Design w/Double Pane Thermal Window in Left Door
- One Year Limited Parts and Labor Warranty
- Five (5) Oven Racks w/11 Position Rack Guide

Optional Features: (Additional Charge)

- High Energy Oven - 100,000 BTU Input
- Two Speed Fan with 1/3 HP Motor
- Stainless Steel Exterior - Legs, Sides, Top, Back
- Continuous Clean Oven Interior
- Stainless Steel Oven Interior
- Cabinet Base with Shelf and Rack Guides
- Open Base with Shelf and Rack Guides
- Solid Doors - Less Window and Lights
- Double Pane Thermal Window in Right Side
- Five (5) Set Point Programmable Control Panel
- Swivel Casters w/Front Brakes (Set of 4)

Item # _____

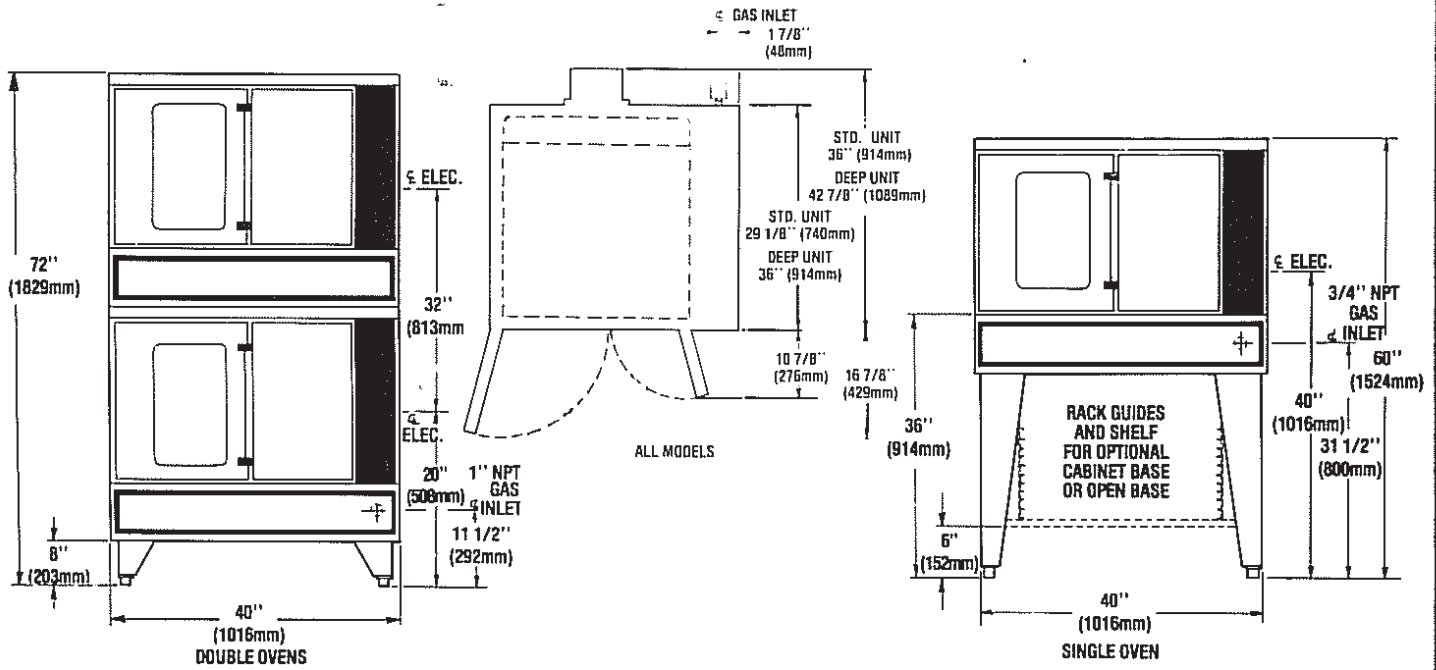
TG3; TTG3

Model # TG4; TTG4

Product Name: Convection Oven Gas, Full-Size

GARLAND

A **WELBILT** Company



MODEL NO.	INTERIOR DIMENSIONS (per deck)			EXTERIOR DIMENSIONS (per deck)			SHIPPING WEIGHT LBS. (Kg.)
	W	H	D	W	H (w/o Legs)	D	
TG3	29" (736 mm)	20½" (520 mm)	21½" (546 mm)	40" (1016 mm)	32" (813 mm)	36" (914 mm)	675 (308)
TTG3	29" (736 mm)	20½" (520 mm)	21½" (546 mm)	40" (1016 mm)	32" (813 mm)	36" (914 mm)	1350 (608)
TG4	29" (736 mm)	20½" (520 mm)	28½" (723 mm)	40" (1016 mm)	32" (813 mm)	43" (1089 mm)	700 (315)
TTG4	29" (736 mm)	20½" (520 mm)	28½" (723 mm)	40" (1016 mm)	32" (813 mm)	43" (1089 mm)	1400 (630)

MODEL NO.	INPUT CHART - NAT. GAS		ELEC CHARACTERISTICS	
	BTU/HR	GAS INLET	120V/1 PHASE	MOTOR
TG3	80,000	ONE @ ¾" NPT	ONE @ 5.2 AMPS	1/3 HP
TTG3	160,000	ONE @ 1" NPT	TWO @ 5.2 AMPS	1/3 HP ea.
TG4	80,000	ONE @ ¾" NPT	ONE @ 5.2 AMPS	1/3 HP
TTG4	160,000	ONE @ 1" NPT	TWO @ 5.2 AMPS	1/3 HP ea.
TG3-X	100,000	ONE @ ¾" NPT	ONE @ 5.2 AMPS	1/3 HP
TTG3-X	200,000	ONE @ 1" NPT	TWO @ 5.2 AMPS	1/3 HP ea.
TG4-X	100,000	ONE @ ¾" NPT	ONE @ 5.2 AMPS	1/3 HP
TTG4-X	200,000	ONE @ 1" NPT	TWO @ 5.2 AMPS	1/3 HP ea.

Installation Notes

Specify Gas Type When Ordering

Gas input ratings shown here are for installations up to 2000 ft. (610 m) above sea level. BTU input ratings must be deflated for high altitude installations.

Manifold Pressure:

NAT 4.0" WC
LP 9.5" WC

Combustible Wall Clearances:

Sides: 6" (152 mm) Back: 6" (152 mm) Base: 8" (203 mm)

Entry Clearances:

Crated 44½" (1130 mm) **Uncrated** 32½" (826 mm)

Continuous product improvement is a Garland policy.
Therefore, specifications and designs are subject to change without notice.

Garland Commercial Industries, Inc., 185 East South St., Freeland, PA 18224

Telephone: 717-636-1000 Telefax: 717-636-3903 Telex: 887-610