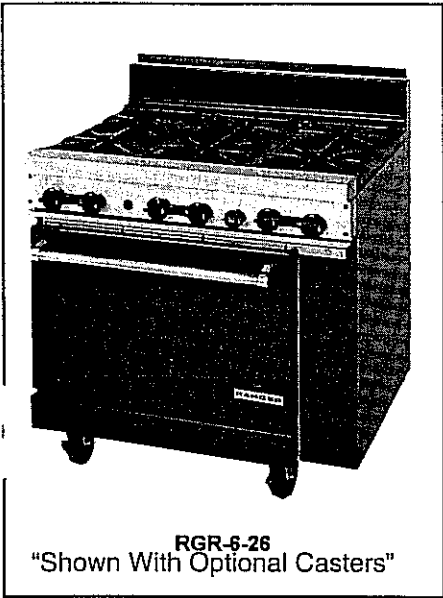


6 in high shelf - 282 876 2 - Range only  
 60 in high shelf - 282 876 2 - Range only

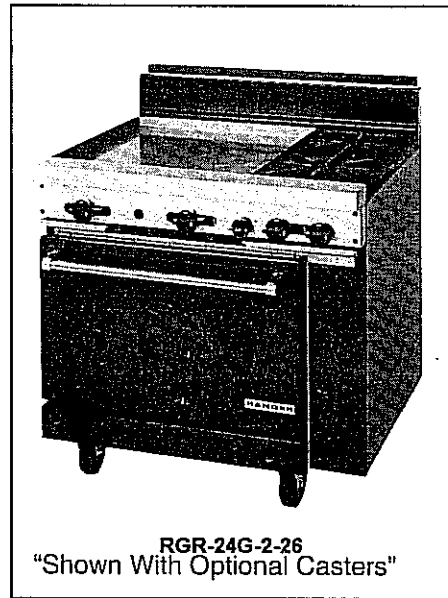
STD W/RC

# RANGER

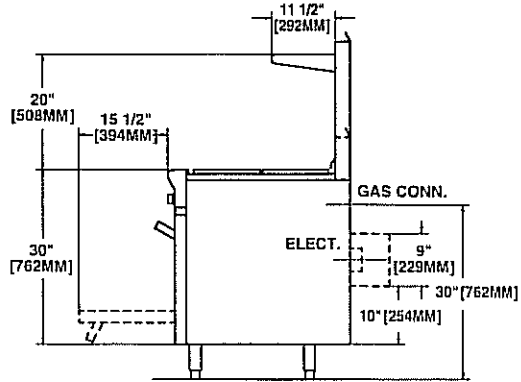
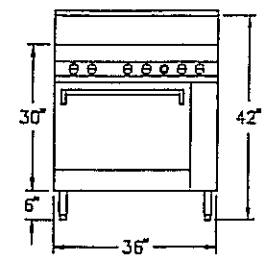
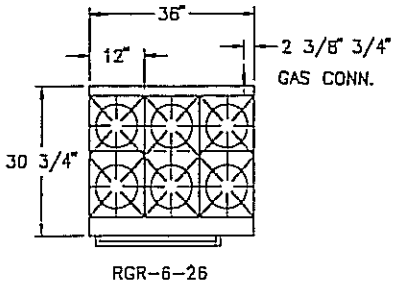
## 36" COMMERCIAL RANGE



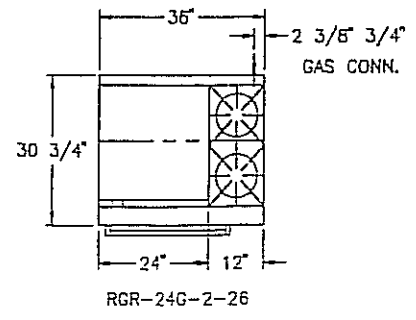
- ### Standard Features
- Black Enamel Front, Sides, Slub Back
  - Stainless Steel Front Top Ledge
  - Large, Easy to Use Knobs
  - 6" Level Adjustable Legs
  - 3/4" Pressure Regulator
  - 3/4" Rear Gas Connection
  - 26 1/2" w x 22 1/2" d x 14" h oven
  - 200° - 500° F Oven Thermostat Range
  - 30,000 BTU Aluminized Steel Oven Burner
  - One Chrome Plated Oven Rack per Oven
    - Strong, Keep Cool Oven Handle
    - Aluminized Steel Oven Interior
    - Heavy Duty Oven Door
- ### Optional Features
- Black Enamel High Shelf and Riser
  - Casters



- ### Burners
- Six 16,000 BTU Open Burners
  - Satellite Burners with Center Pilot
  - One Piece Cast Iron Lift-off Top Grate
    - 12" w x 25" d Top Grate



- ### Griddle
- Large Capacity Aluminized Drip Pan
    - Nominal 1/2" Thick Steel Plate
    - Removable Drip Pan
    - Manual Control
    - 3" Wide Drip Trough
  - Two 20,000 BTU Griddle Burners
- ### Burners
- Two 16,000 BTU Open Burners
  - Satellite Burners with Center Pilot
  - One Piece Cast Iron Lift-off Top Grate
    - 12" w x 25" d Top Grate



5.0" w.c. natural gas  
 10.0" w.c. propane gas

# RANGER

## 60" COMMERCIAL RANGE

### Standard Features

- Black Enamel Front, Sides, Stub Back
- Stainless Steel Front Top Ledge
- Large, Easy Use Knobs
- 6" Adjustable Legs
  - ¾" Pressure Regulator
  - ¾" Rear Gas Connection
- Two 26½" w x 22½" d x 14" h ovens
- 200° - 500° F Oven Thermostat
- 30,000 BTU Oven Burner-Aluminized Steel
  - One Chrome Plated Rack per Oven
- Strong, Keep Cool Oven Handle
- Aluminized Steel Oven Interior
  - Heavy Duty Oven Door

### Optional Features

- Black Enamel High Shelf and Riser
- Casters



RGR-24G-6-2626

"Shown With Optional Casters"



RGR-10-2626

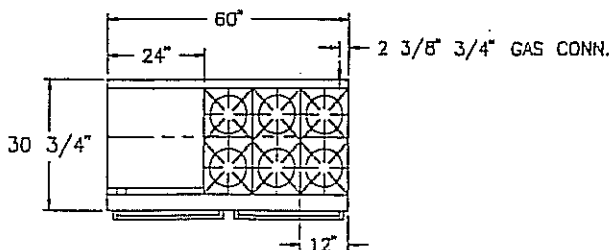
"Shown With Optional Casters"

### Griddle

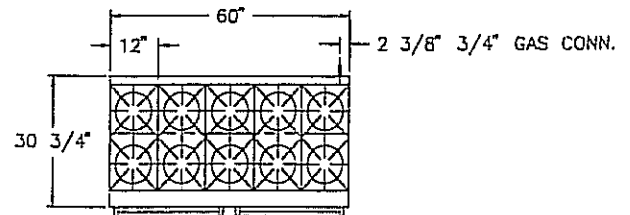
- Large Capacity Aluminized Drip Pan
  - Nominal ½" Thick Steel Plate
  - Removable Drip Pan
  - Manual Control
  - 3" Wide Drip Trough
- Two 20,000 BTU Griddle Burners
- Six 16,000 BTU Open Burners
- Satellite Burners with Center Pilot
- One Piece Cast Iron Lift-off Top Grate
  - 12" w x 25" d Top Grates

### Burners

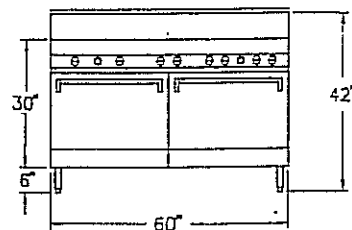
- Ten 16,000 BTU Open Burners
- Satellite Burners with Center Pilot
- One Piece Cast Iron Lift-off Top Grate
  - 12" w x 25" d Top Grates



RGR 24G-6-2626



RGR-10-2626



For further information, please contact your local distributor.

U.S. Range, Inc.

A WELBILT Company

RANGER SPECS