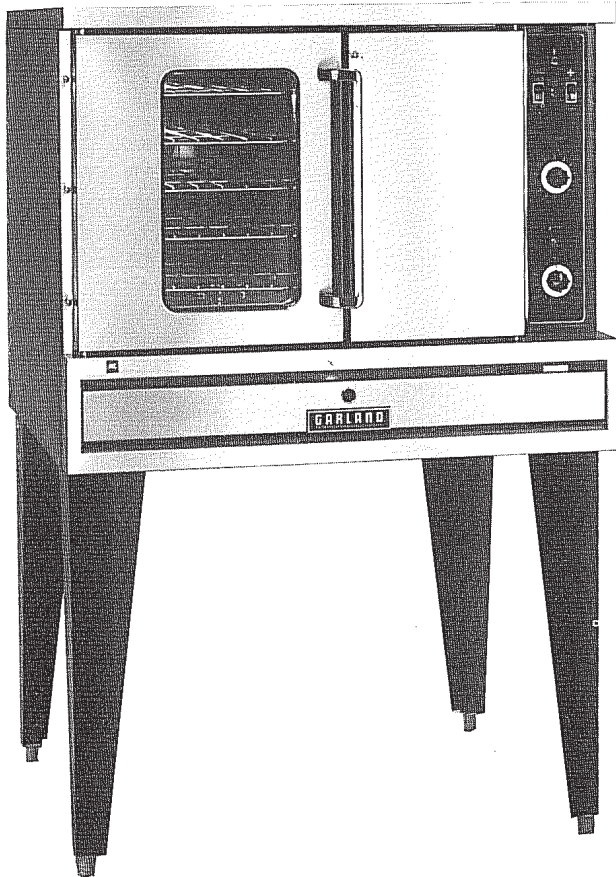


GARLAND®

A WELBILT Company

Item #: _____

Model # ICO-E-10; ICO-E-20
Product Name: Institutional Convection Oven,
Full Size, Electric



Model # ICO-E-10



Specifications

General:

Designed as a general purpose oven for baking, roasting and rethermalizing a variety of food products, faster and at lower temperatures by circulating air throughout the oven cavity.

The additional oven depth of this unit allows for the placing of a 26" wide bun pan either from front to back or side to side.

Standard Features:

- Mechanical controls 150°F (66°C) to 500°F (260°C) temperature range
- One-hour electric timer
- Total of 11.0 kw loading per cavity
- 208 or 240 voltage
- Porcelain enameled oven cavity with coved corners
- Two speed fan with 1/2 HP motor
- Five (5) oven racks with 11 position rack guide
- Stainless steel front, black powder coat epoxy sides, top, back and legs
- 60/40 dependent door design with double pane thermal window in left door and interior lighting
- Double deck models available
- One year parts and labor limited warranty

Optional Features:

(Additional Charge)

- Windows in both doors w/ lights
- Extra oven racks
- Stainless steel oven interior
- Continuous clean oven interior
- Swivel casters, set of 4 with front brakes
- Perforated main back (black powder coat epoxy or stainless steel)
- Mobil cart loading system with basket dollies
- Open base with rack guides and shelf
- Stainless steel exterior
- Stainless steel legs
- Stainless steel solid doors
- 460 voltage
- 220/380 voltage four (4) wire WYE System
- 50 cycle wiring
- Extended second year limited warranty

Control Panel Options:

(Additional Charge)

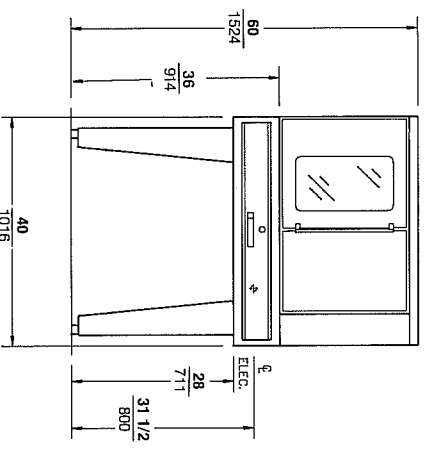
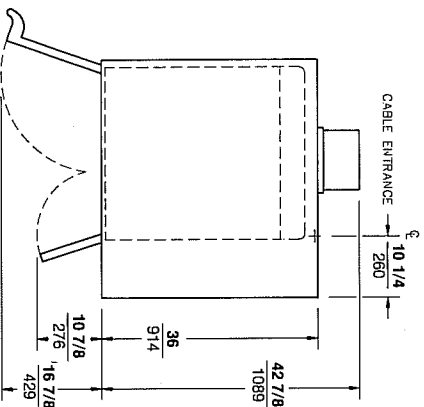
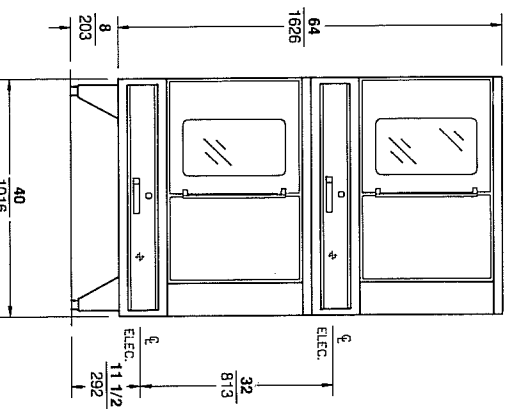
- Electronic controls
- Programmable memory
- Cook 'n hold

Item #: _____
Model # ICO-E-10; ICO-E-20
Product Name: Institutional Convection Oven, Full Size, Electric

SPECIFICATIONS

DIMENSIONS: inches or inches/mm

DIMENSIONS



DOUBLE OVEN

SINGLE OVEN

Note: If unit is on casters, add 5" / 127mm to overall height for single deck, deduct 1-1/2" / 38mm from overall height for double deck.

INTERIOR DIMENSIONS (per deck)

W	H	D
29 7/36	20 1/2 / 520	28 1/2 / 723

INSTALLATION NOTES

MODEL NO.	LOADING	TOTAL KW	NOMINAL AMPERES PER LINE*											
			208V/1PH	240V/1PH	208V/3PH	X	Y	Z	240V/3PH	X	Y	Z		
ICO-E-10	11.0 KW	53	46			32	32	28				28	28	24
ICO-E-20	22.0 KW	106	92			60	65	60				52	56	52

* Includes 1/2 HP Fan Motor

NOTE: 208 VAC= 197 to 219 VAC/240VAC=220 to 252 VAC
 1 Speed Motor, 1725 RPM (60HZ)
 2 Speed Motor, 1140 and 1725 RPM (60HZ)

Combustible Wall Clearances		460V Information Available Upon Request		Shipping Weight	
Sides	Back			ICO-E-10	ICO-E-20
6"	6"			700#/315 Kg.	1400#/630 Kg.
152	152				
Entry Clearance					
Crated	Uncrated				
44 1/2"	34"				
1130	864				

Continuous product improvement is a Garland policy. Therefore, specifications and designs are subject to change without notice.