

## G2000 Spring Installation

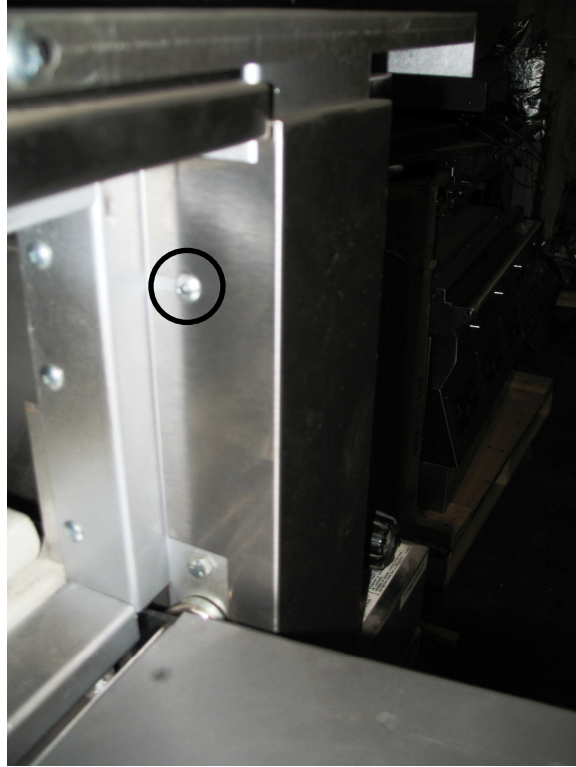
**7" Doors** have only **one spring** on right,  
**12" Doors** have **two springs**, one on the right and one on the left.



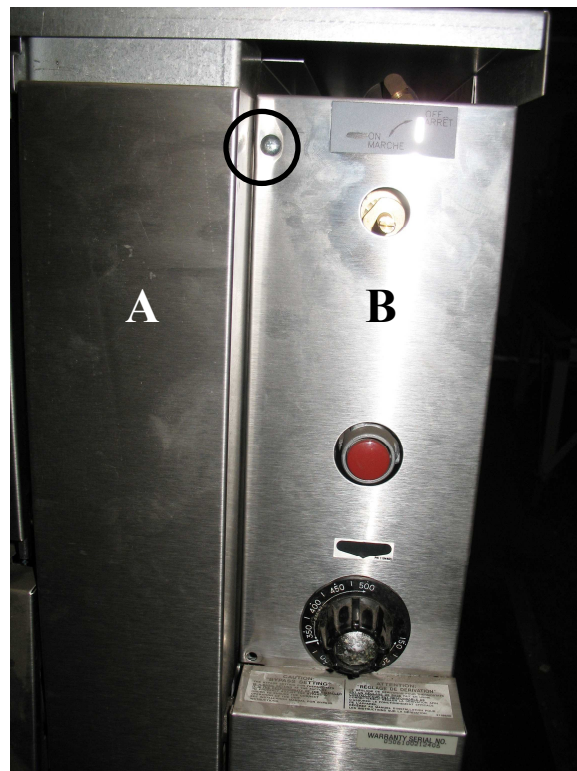
First remove bottom cover by removing the 2 screws on either end.



Next loosen the two screws shown above, behind the panel on the right.



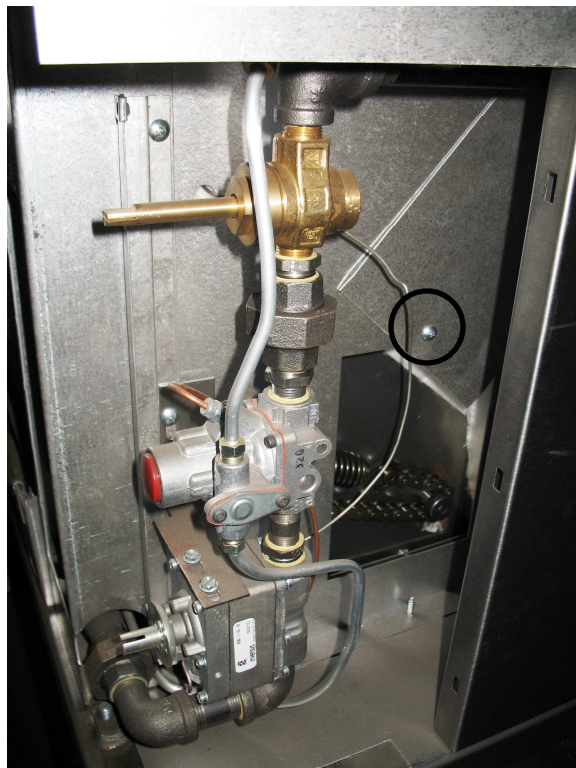
Then open the door and loosen the screw shown above.



Now remove the knobs and the screw shown above and remove both panels A and B.



Next remove any insulation in the way and set aside to replace when complete.

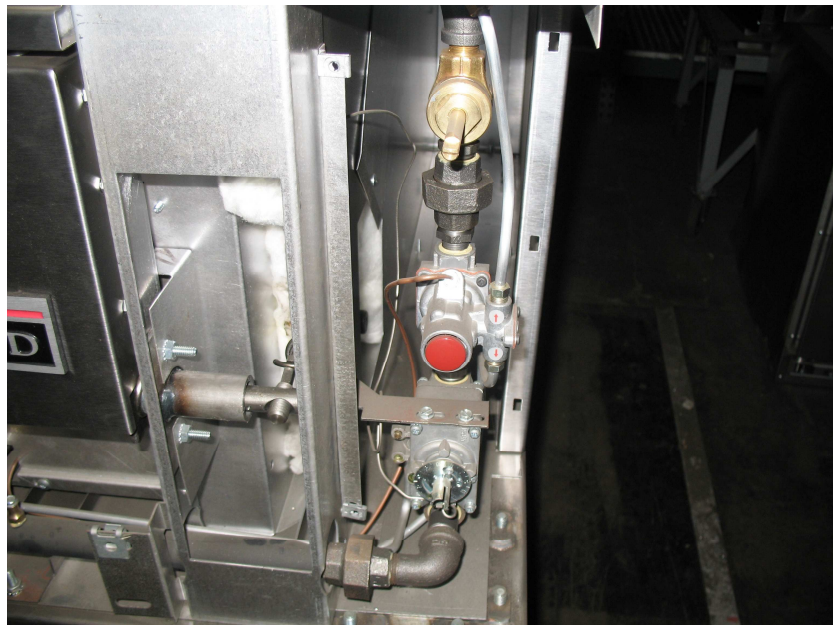


Remove screw and panel shown above, or Rotate panel to view Chain and Spring.

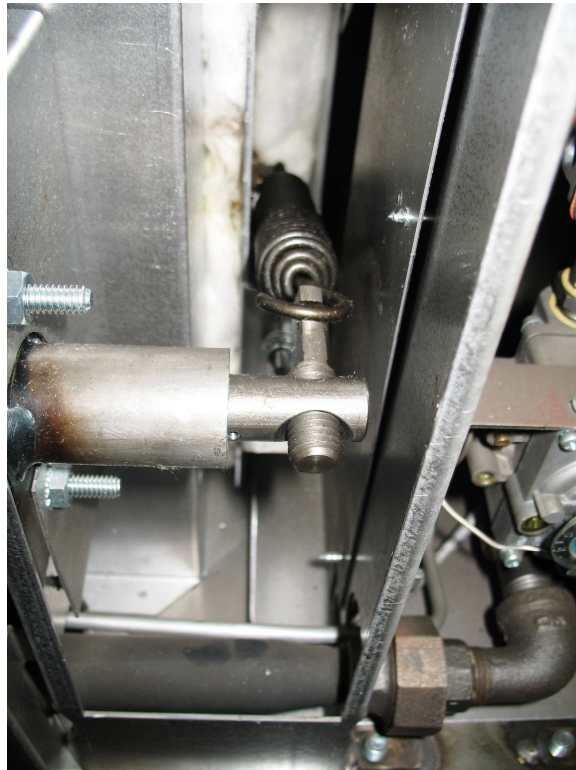




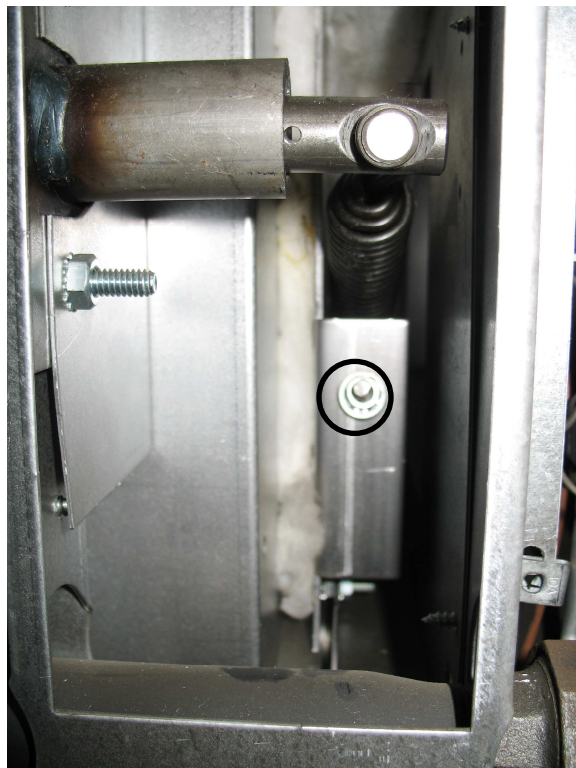
Spring and Chain shown above.



Take care not to damage Thermostat Capillary during repairs.



With the J Bolt as loose as possible, assemble and hook chain to door arm.  
A hook with a handle is recommended.



Then adjust the J bolt for spring tension and test, then reassemble.