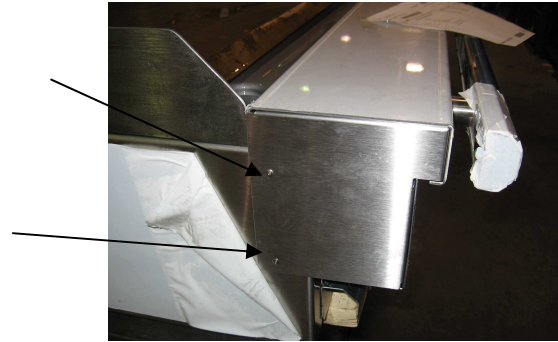
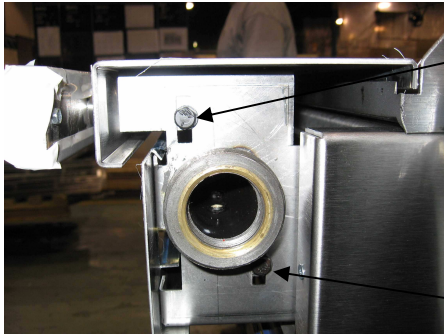


CUISINE GRIDDLE SEAL INSTALLATION INSTRUCTIONS

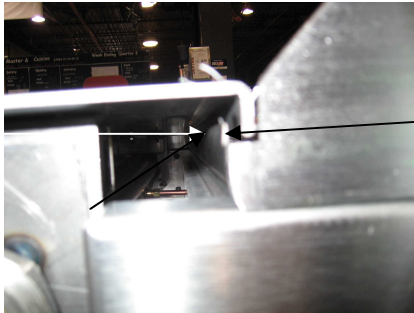
These instructions are for the installation of the following parts:

4523436	GRIDDLE SEAL 12in CUISINE	4523440	GRIDDLE SEAL 48in CUISINE
4523437	GRIDDLE SEAL 18in CUISINE	4523441	GRIDDLE SEAL 54in CUISINE
4523438	GRIDDLE SEAL 24in CUISINE	4523442	GRIDDLE SEAL 60in CUISINE
4523439	GRIDDLE SEAL 36in CUISINE	4523443	GRIDDLE SEAL 72in CUISINE

1. Remove front rail by removing (4) ¼-20 bolts near the ends of the rail. If the unit has end enclosures you will need to drill out the rivets first.



2. Clean front lip of griddle, on both sides, very well with alcohol or solvent.



3. Push seal down over front of griddle as far as it will go. Place seal in the direction shown in the drawing below (5).
4. Reinstall front rail. Make sure rail sits as in drawing shown below.

