



**For KIT #4523986 - Cuisine Griddle Grease Tray Overflow**

**This Kit is intended for Cuisine Griddle units with an RC Oven:**

**C836 (RC / -36ARC / -336ARC / SURC / -436ARC / -WS24ARC)**

**To be done by a Licensed Gas Technician !**

<b>Part #</b>	<b>Description</b>	<b>Quantity</b>
4523983	Grease Tray Over-Shelf	1
4517055	L-Bracket for Power Supply Terminal Block	1
4523984	Shelf for RC Oven's Electrics	1
F32	Screws 10 – 24 UNC x ½" Long	4

**Additional Items/Tools You \*May\* Need (Not Supplied)**

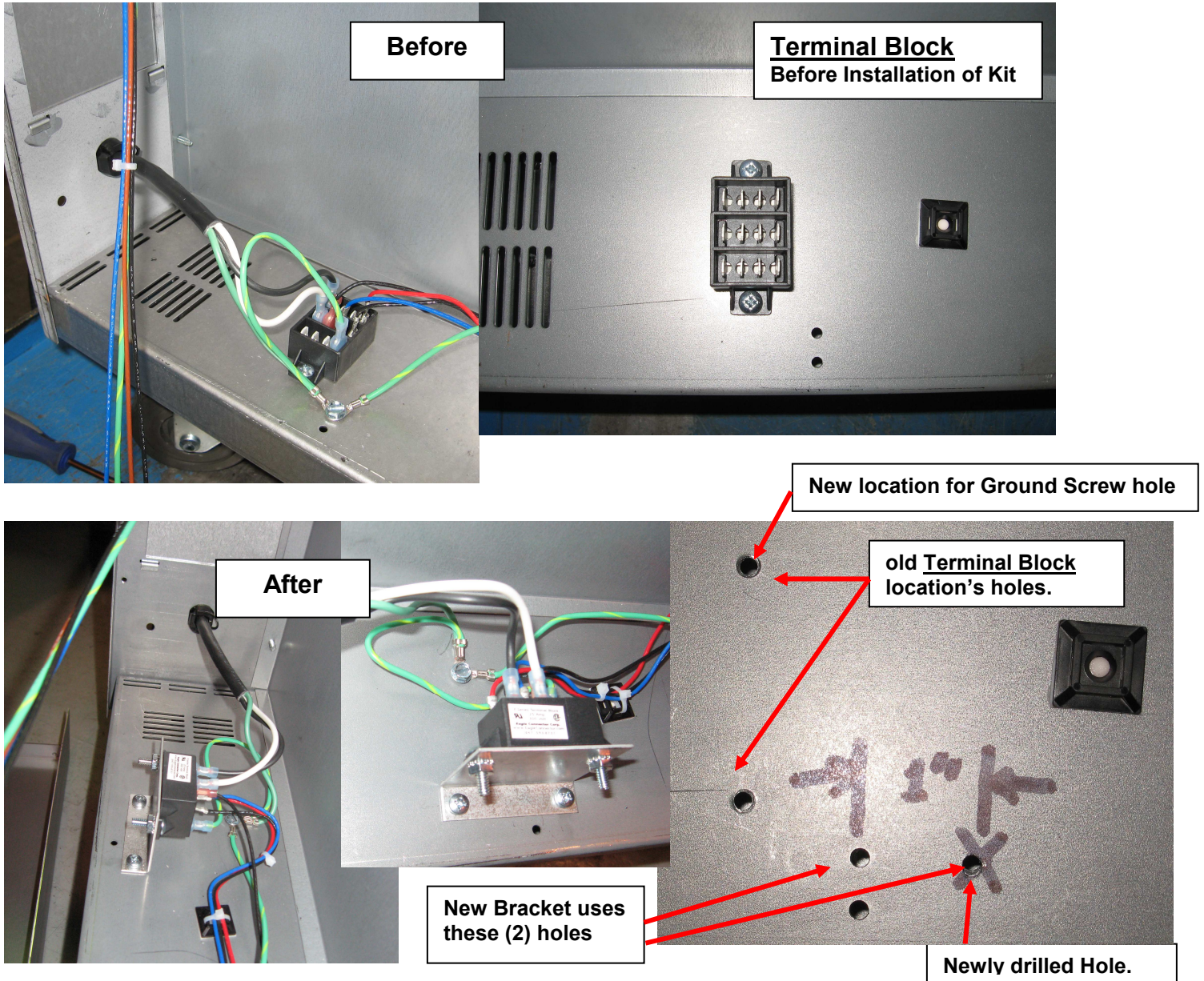
Drill, Hammer & Centre Punch, 0.156" Drill Bit

Screw drivers, including Robertson #2 (various), 5/16" Socket Driver

**Instructions:**

1. Disconnect the gas & power supply for the unit.
2. Remove the oven knob by pulling it towards you.
3. Remove the grease tray.
4. Remove the front panel by (a) Opening the oven door and unfastening the (1) screw found there. (b) Open the kick panel (the panel below the oven door) by lifting up and pivoting the top edge towards you. Then unfasten the (1) screw found there. (c) Pull the front panel towards you (there are 2 spring clips that hold the panel along the left edge). Leave the wiring attached to the front panel (ground wire and fan power switch wires).
5. Remove the main left-side panel by (a) Unfastening the (2) screws found at the back of the unit. (b) Slide the back edge of the panel off the rear corner frame, then (c) Unhook the panel off the front (2) pins.

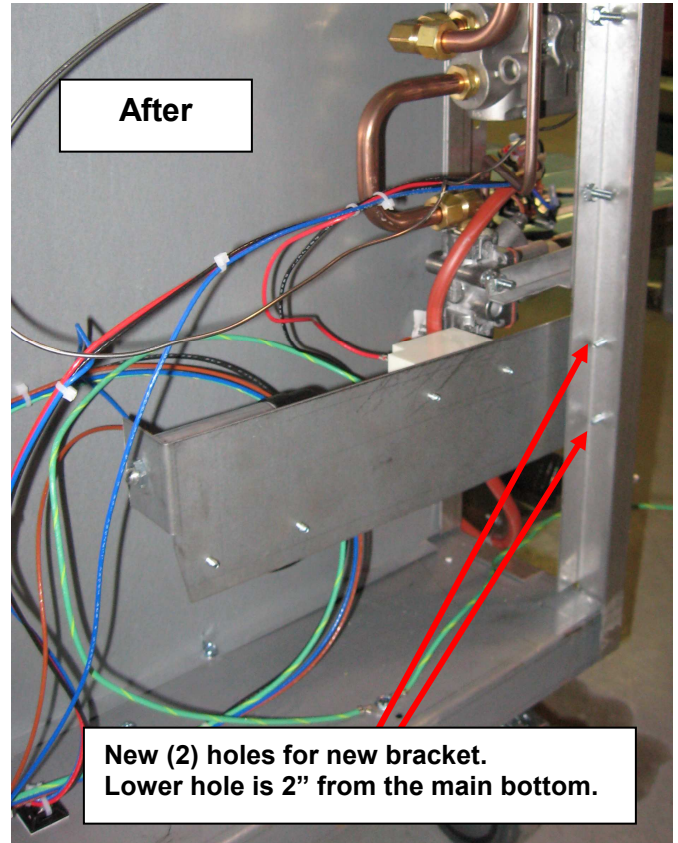
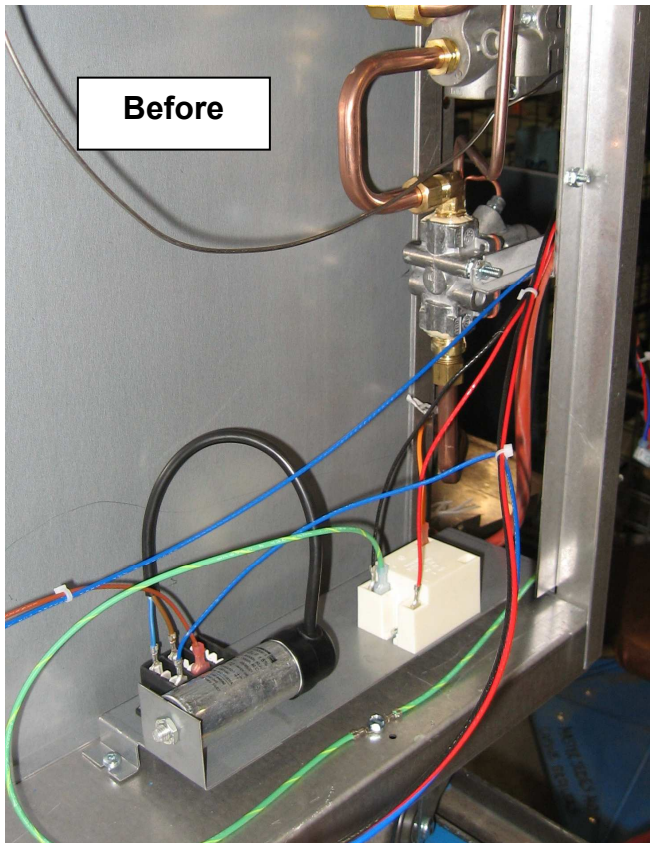
## New Terminal Block Bracket 4517055 - Installation:



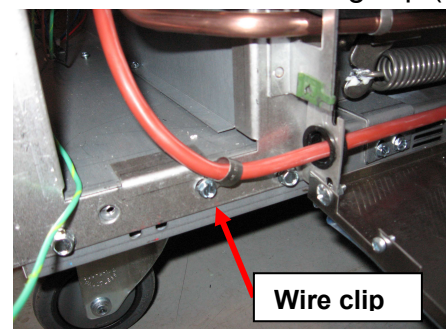
6. Unfasten (2) screws securing the terminal block to the main bottom of the unit. Do NOT unhook the wires from terminal block (unnecessary).
7. Relocate the ground wires by (a) Unfastening the ground screw (b) Re-fastening the ground screw and wires to the right/inner hole that the terminal was using.
8. Use the supplied L-Bracket (4517055) to locate and drill (1) 0.156" hole, 1" apart in the orientation shown above. (TIP! Use the inner (2) holes on the small flange of the bracket). Be sure to clean out any metal filings away from the wires and terminal block!
9. Attach terminal block to the L-Bracket using (2) of the supplied screws.
10. Attach the L-Bracket to the main bottom of the unit with the terminal block facing to the inside of the unit. Use the (2) screws that previously secured the terminal block to the main bottom.



## New Shelf for RC Oven's Electrics 4523984 - Installation:



11. Unfasten & keep the screws holding the electric components on the shelf (the capacitor, the terminal block and the spark ignition module). Do NOT unhook the wires from components (unnecessary).
12. Unfasten the old shelf's (2) mounting screws found at the front of the unit, behind the front panel. (Discard 1 screw; keep the other). The right screw also holds a wire-securing clip (to be reattached after the old shelf is removed).
13. Remove/Slide the old shelf out, and discard.
14. Reattach the wire-securing clip into the right, front hole.



15. Use the supplied, new shelf (4523984) to locate and drill (2) 0.156" holes (see pictures) onto the left corner column. The bottom hole should be located approximately 2" from the bottom of the frame. Tip! Do NOT attach the bracket just yet.
16. Slide the new shelf into the location where the old shelf was, and then attach the electrics.
17. Attach the new shelf with electrics onto the left corner column where the (2) new holes are located using (2) supplied screws.

## Instructions (Final Steps):

18. Reattach main side panel, front panel and knob.
19. Slide the new Grease Tray Over-Shelf (4523983) into the opening where the grease tray is housed, as shown below:



20. Insert the Grease Tray.
21. Check for correct operation of the oven (i.e. no issues with the electrics that were recently moved).

**FINISHED**