



INSTRUCTIONS: INSTALLATION AND
ADJUSTMENT OF DOOR ROD MECHANISM

TOOLS REQUIRED:

- LARGE STANDARD SCREWDRIVER (BLADE)
- 90 IN-LB. TORQUE WRENCH
- 2 - 7MM OPEN END WRENCHES
- #2 PHILLIPS SCREWDRIVER

INSTALLATION

1. REMOVE THE FRONT VENEER (ABOVE THE DOORS ON MCO, BELOW THE DOORS ON ICO). THIS WILL EXPOSE THE DOOR CHAIN MECHANISM.
2. CLOSE BOTH DOORS.
3. YOU SHOULD HAVE THE FOLLOWING PARTS:
 - (2) TURNBUCKLES
 - (2) SHORT RODS
 - (2) DOOR CHAINS
 - (2) LONG RODS
 - (4) ¼-20 NUTS
4. INSTALL A TURNBUCKLE ONTO EACH OF THE SHORT RODS UNTIL THE ROD THREADS JUST BEGIN TO PROTRUDE THROUGH THE HOLE IN THE TURNBUCKLE. THIS ALLOWS FOR MAXIMUM ADJUSTMENT RANGE. INSTALL TWO (2) ¼-20 NUTS ONTO EACH LONG ROD. YOU SHOULD NOW HAVE TWO (2) ASSEMBLIES CONSISTING OF:

(2) TURNBUCKLE → (1) SHORT ROD → (1) DOOR CHAIN
→ (1) LONG ROD → (2) ¼-20 NUTS
5. PLACE THE CHAINS AROUND THE SPROCKETS WITH THE LONG ROD TO THE REAR AND THE SHORT ROD TO THE FRONT. THERE SHOULD BE SEVEN (7) PINS ON THE FRONT SIDE OF EACH SPROCKET (*THE EIGHTH PIN ON EACH SIDE SHOULD JUST TOUCH THE SPROCKET.*) (SEE FIGURE 1 - page 4)
6. STARTING WITH THE LEFT TURNBUCKLE AND RIGHT LONG ROD, INSTALL EACH LONG ROD INTO THE OPPOSITE TURNBUCKLE (SEE FIGURE 1- *See page 4*).

ADJUSTMENT

7. TIGHTEN THE LEFT TURNBUCKLE BY HAND. YOU SHOULD NOW HAVE APPROXIMATELY THE SAME AMOUNT OF THREAD ON EACH SIDE OF THE TURNBUCKLE. NOW TIGHTEN THE RIGHT TURNBUCKLE. YOU SHOULD ALSO HAVE APPROXIMATELY THE SAME AMOUNT OF THREAD ON EACH SIDE OF THE RIGHT TURNBUCKLE AS WELL.

8. OPEN THE DOORS APPROXIMATELY ½ INCH. ADJUST THE TURNBUCKLES SO THE RIGHT DOOR CLOSES ABOUT ¼ TO ½ INCH AHEAD OF THE LEFT DOOR (SEE FIGURE 1). **THE DOORS SHOULD OPERATE FREELY!**

*NOTE: TIGHTENING THE LEFT TURNBUCKLE WILL CLOSE THE RIGHT DOOR AND OPEN THE LEFT.
TIGHTENING THE RIGHT TURNBUCKLE WILL CLOSE THE LEFT DOOR AND OPEN THE RIGHT.

SECURING THE TURNBUCKLES

9. HOLDING THE LEFT TURNBUCKLE STEADY WITH THE LARGE SCREWDRIVER, TIGHTEN THE NUT CLOSEST TO THE TURNBUCKLE AGAINST THE TURNBUCKLE TO 90 IN-LB. THEN, TIGHTEN THE SECOND NUT AGAINST THE FIRST ALSO TO 90 IN-LB. REPEAT FOR THE RIGHT TURNBUCKLE.

CHECK YOUR WORK

10. Operate the door to full open, and full close, several times to insure positive sealing. Also, insure the door is tight enough when closed so that average handle force is required to overcome the door seal lock.

10. REPLACE THE FRONT VENEER.

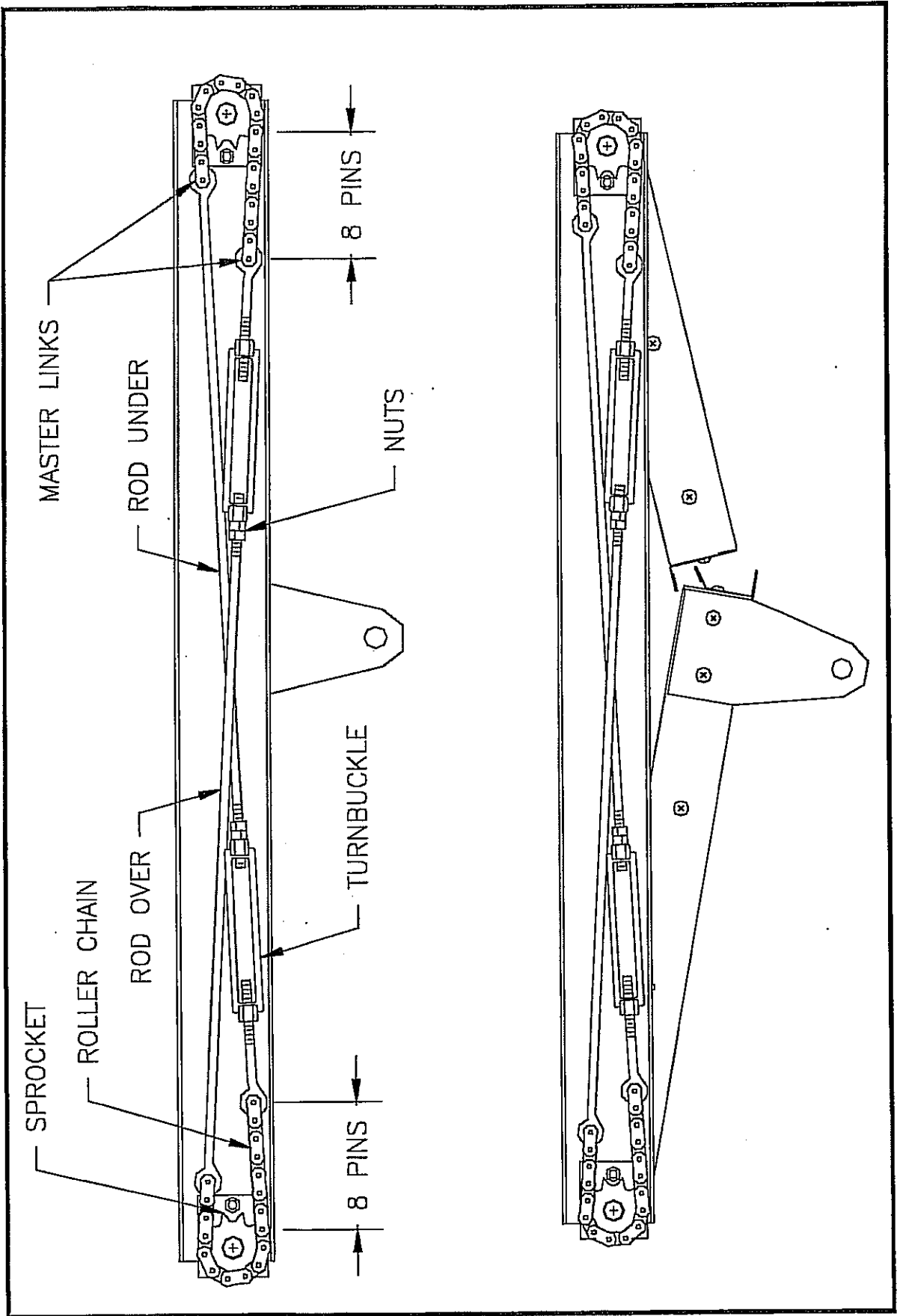


FIGURE 1: DOOR CHAIN/TURNBUCKLE ASSEMBLY