

Garland / US Range / Sunfire Ranges Caster Guide

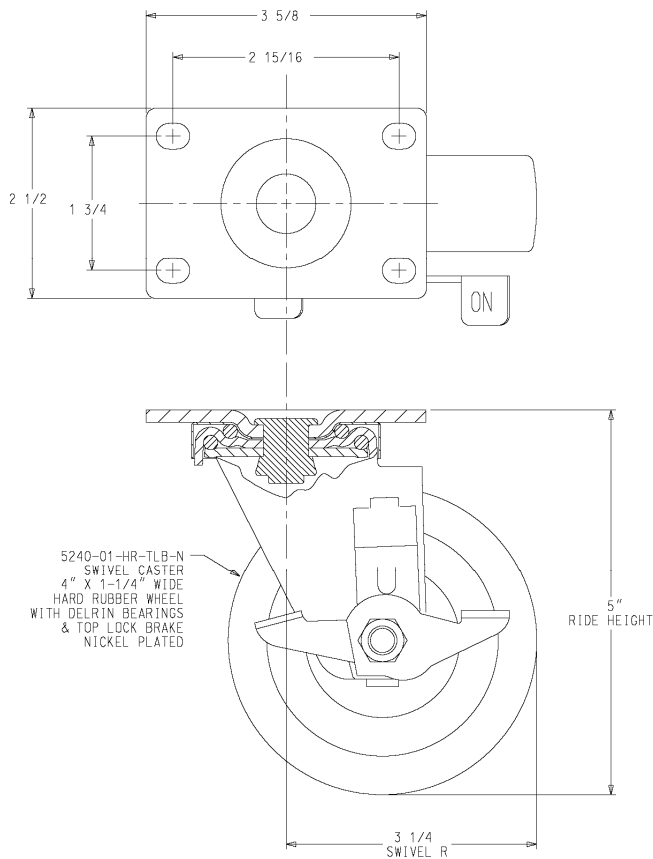
The 1027801 and 1027800 casters are used on the following ranges:

**H/P 280, G280, GV280, 280, 380,
Master Series, 40 Series, 10 Series**

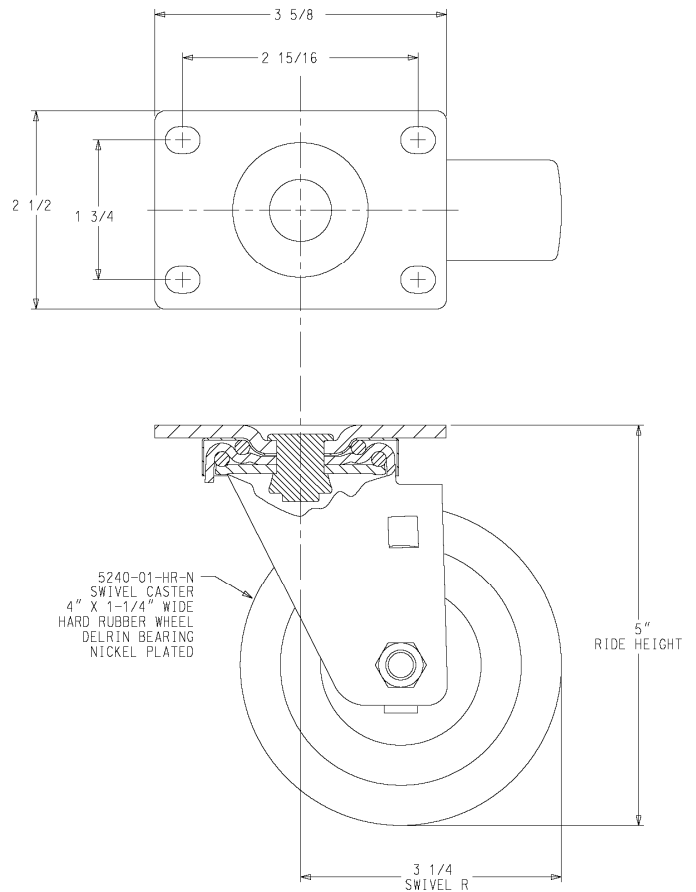
And they were used **Up to December 2004** on the following ranges:

36E, SX (except the SX-6-26A), Sentry, S, PS, PX, C836

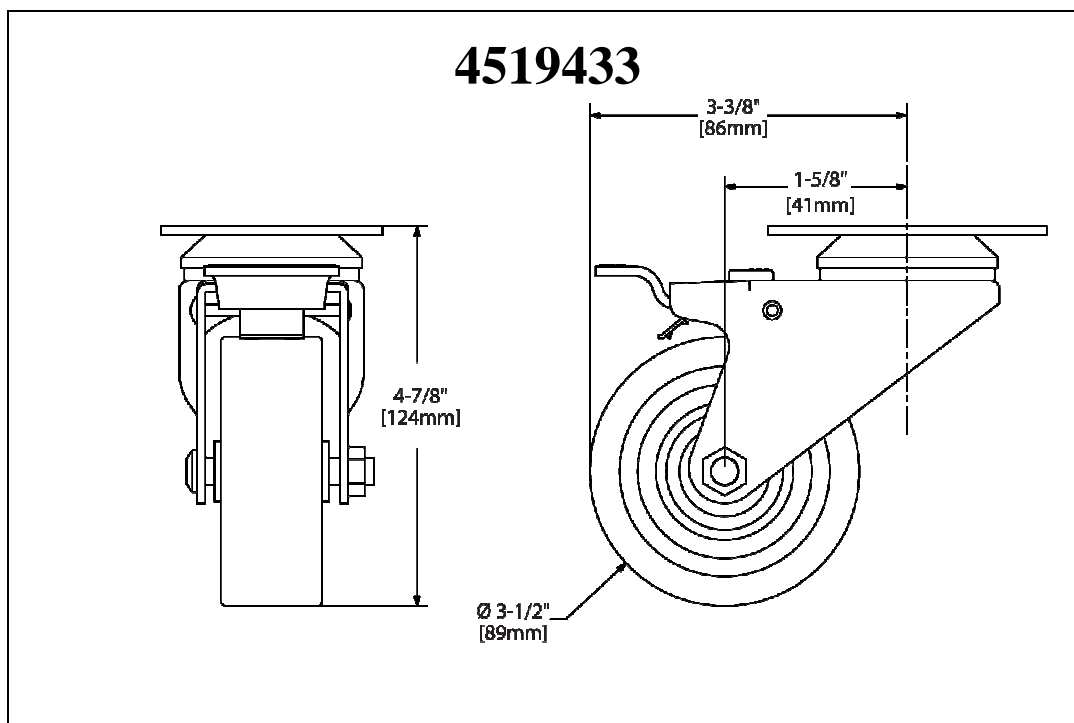
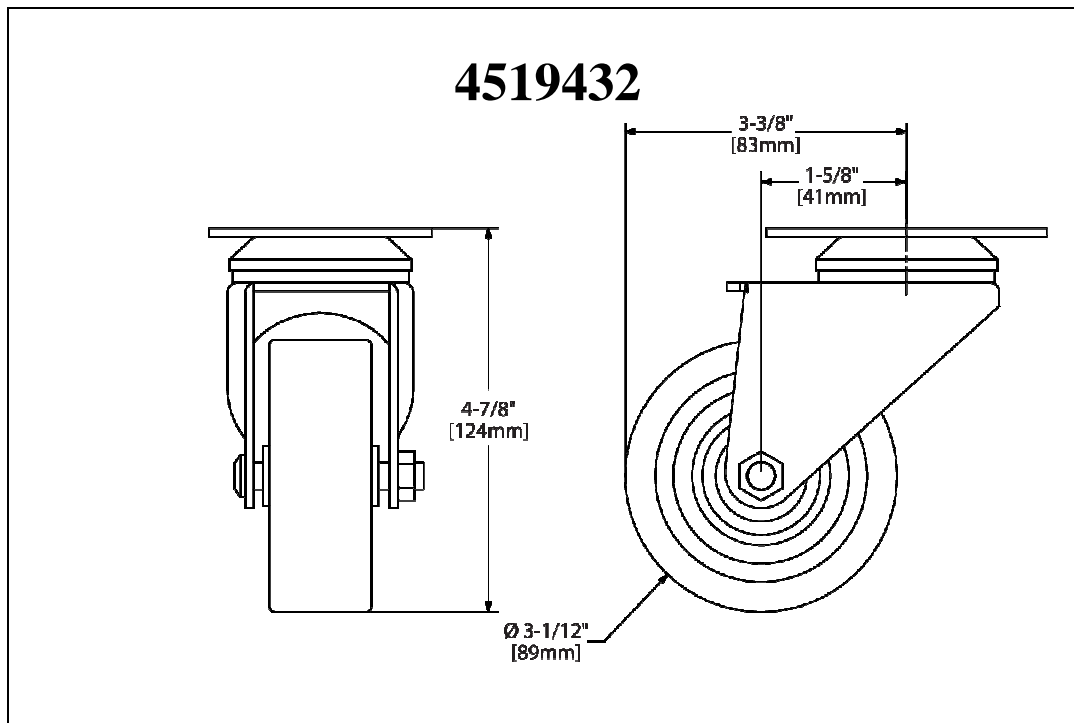
1027801



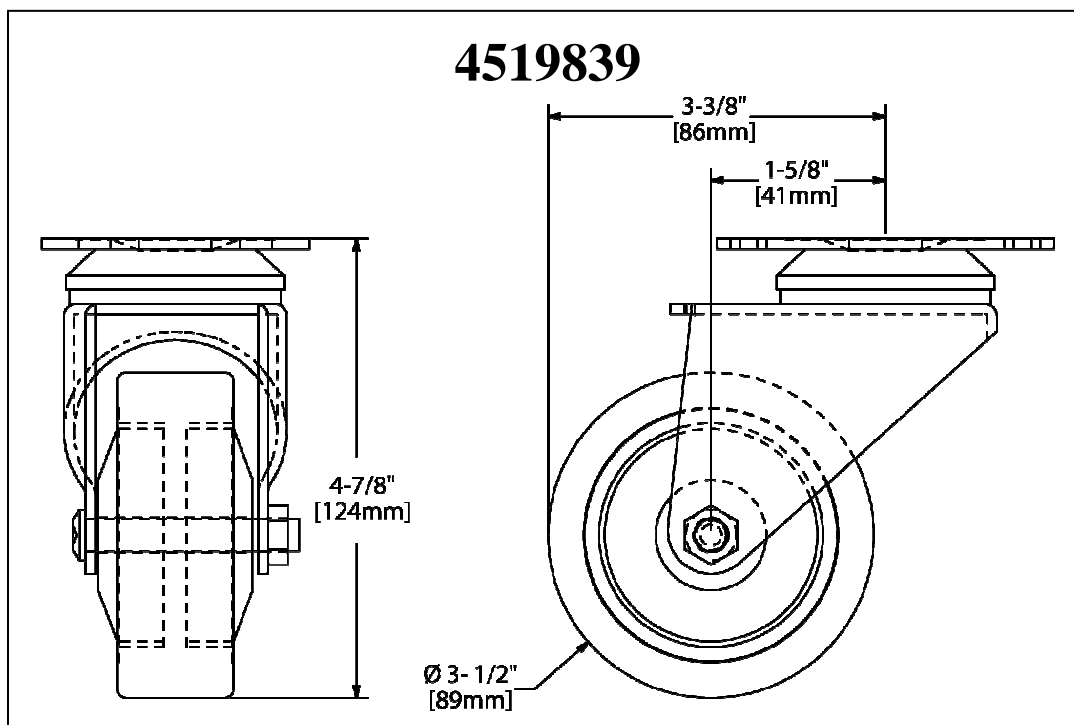
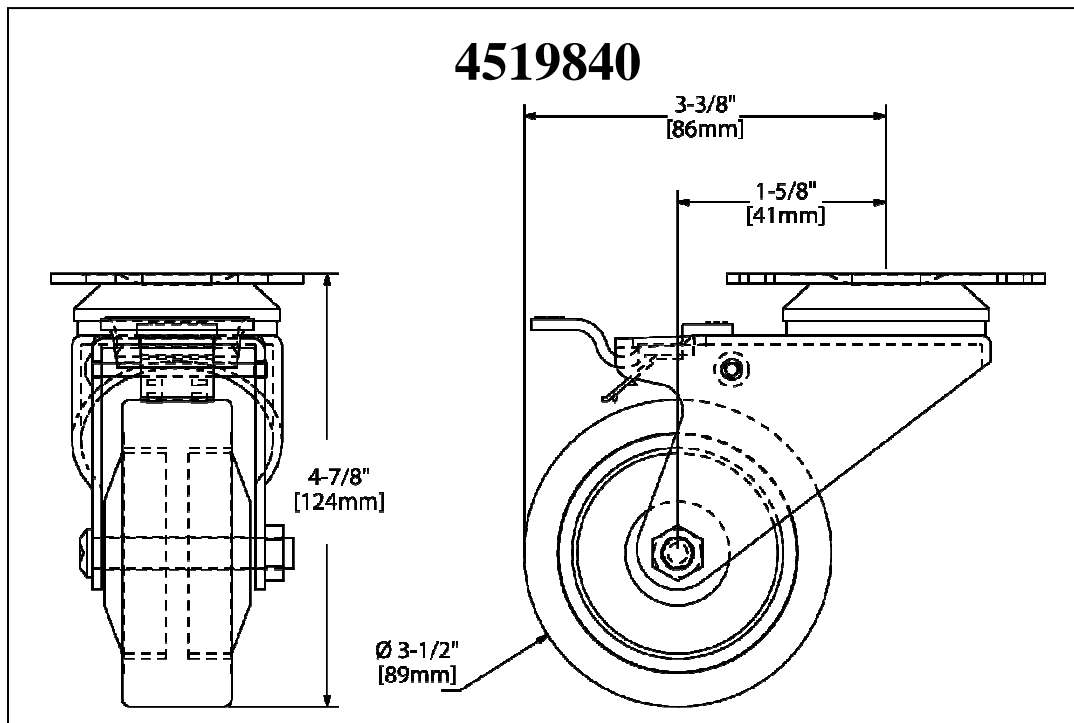
1027800



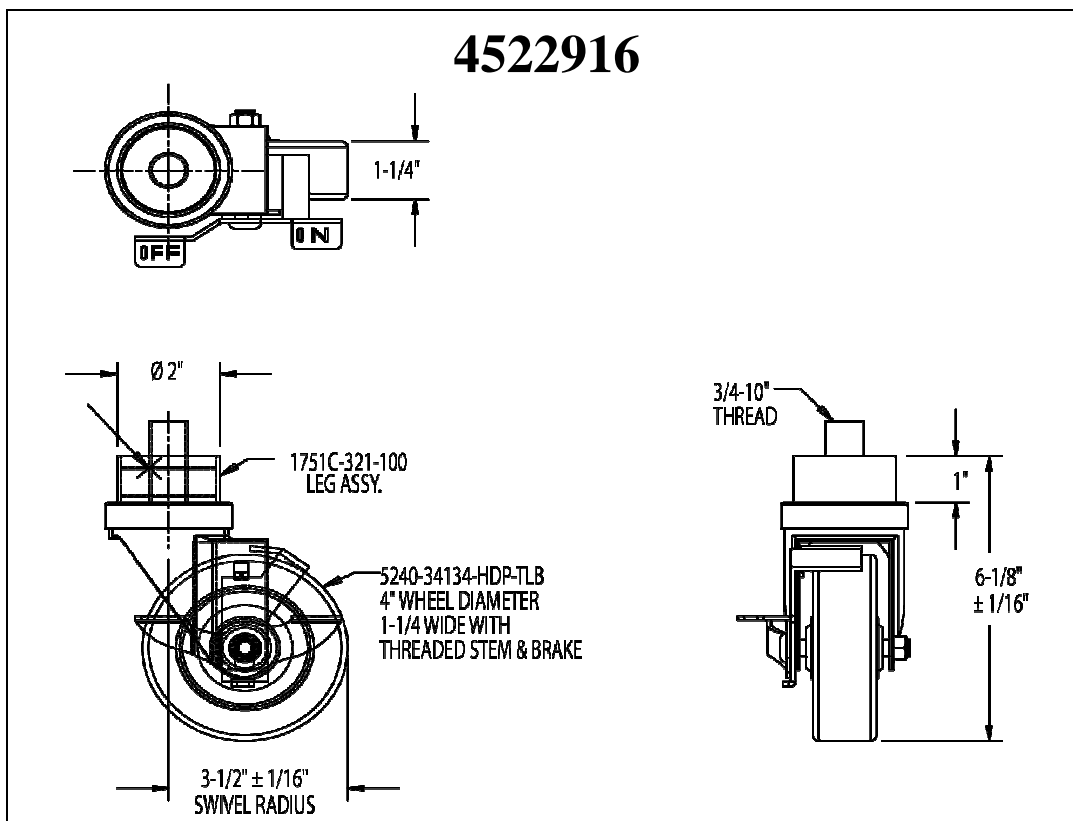
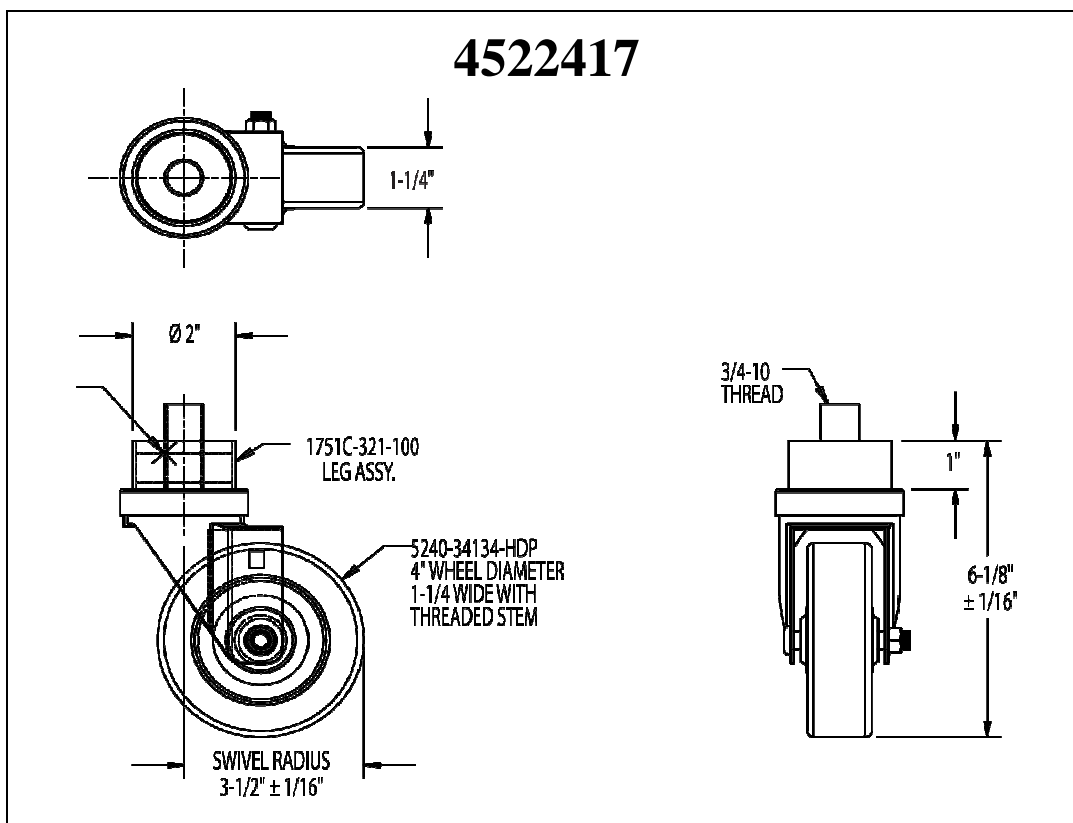
The 4519432 and 4516433 Casters are used **from December 2004** on the following ranges:
36E, SX (except the SX-6-26A), Sentry, S, PS, PX, C836, S680, 680



The 4519840 and 4519839 casters are used on the Wendy's **STW286** and the **STW286A**
Master and Cuisine Poly Caster Optional



The 4522417 and the 4522916 **Non Adjusting Casters** are used on the **G Series, U Series, and the X Series.**



The 4523013 and the 4523014 **Adjustable Casters** are an option for the **G Series, and U Series.**

