



BULLETIN # B-97-2009-S

**From: Parts and Service Department
To: All Authorized Service Agencies**

Date: Sept 18, 2009

**Product: Garland Convection Oven
Subject: New Axial Cooling Fan**

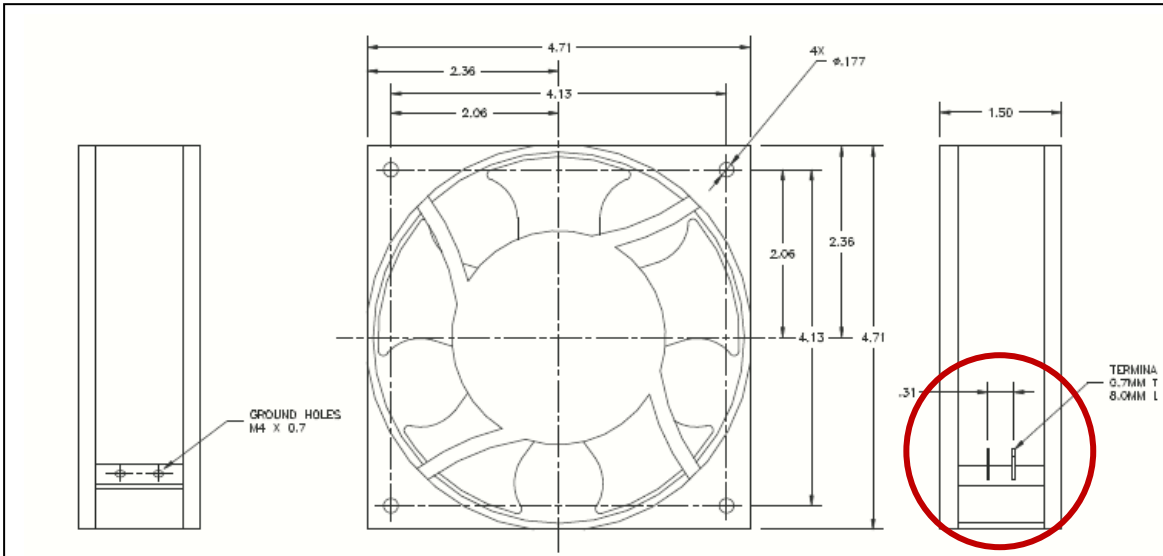
The axial cooling fan used in the MCO units has changed suppliers, and as a result, there is a change to the part in the position of the electrical terminals. In order to maintain the directionality of the air flow, please see the attached instructions to be followed when installing a replacement into an older oven.

Please contact The Garland/US Range Parts or Technical Service Department with any question.

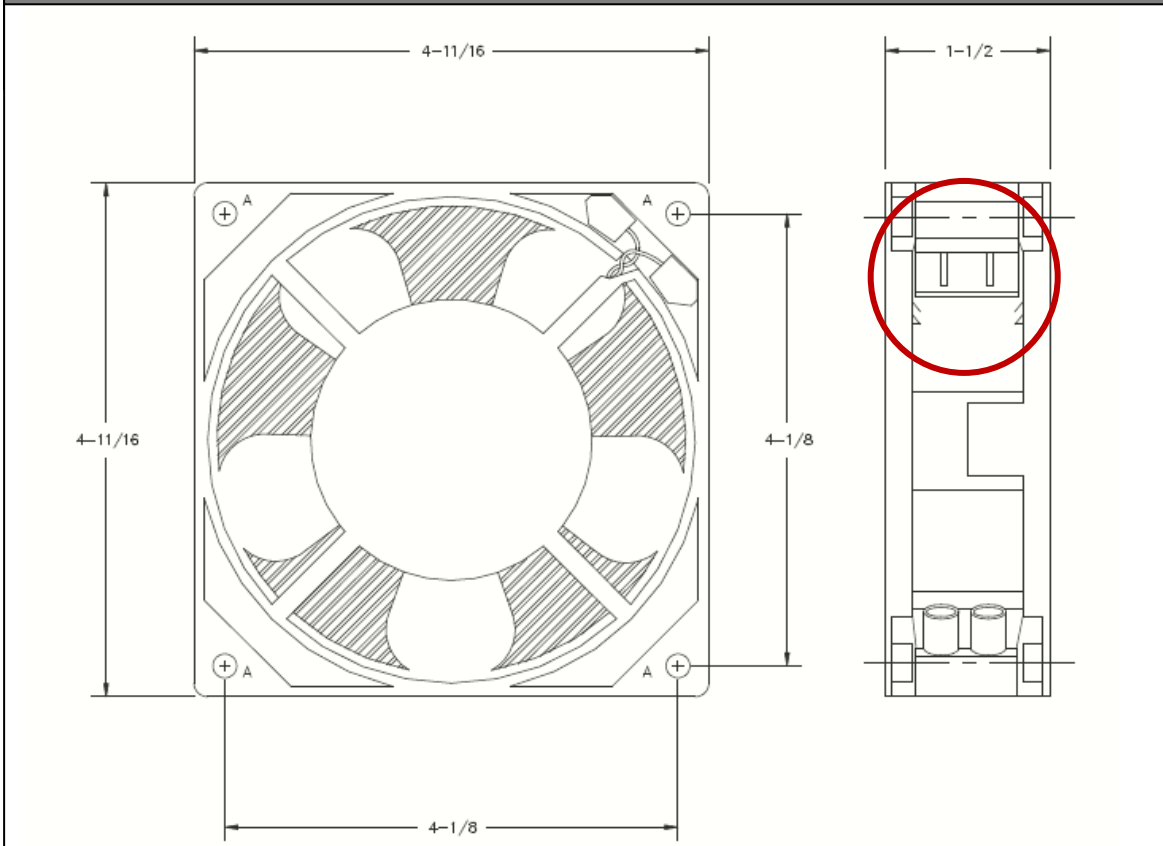
Instructions for Convection Oven Axial Fan Replacement

Original fan part numbers 1918201 and 1918202 have been replaced by part numbers 1671100 and 1671101 respectively.

(Key difference – the Terminals are on opposing sides)



Original Axial Fan – PN 1918201/1918202



Replacement Axial Fan – PN 1671100/1671101

When installing the 1671100/1 fan, note the design of the surrounding duct. If the opening across the full width as shown in photo 1, orient the fan as shown for optimal wire routing. If the duct is only open 50% as in photo 2, orient the fan as shown below in photo 3. When the duct is reinstated, route the wires as shown in photo 2. (Ensure the wires are not pinched or damaged when installing the duct.)

