

GARLAND®

A **WELBILT** Company

Item #: _____

Model # 684

Product Name: 60" Wide - 680 Series
Medium Duty - Electric Range



Model # 684

(684 Range Shown with two optional 12" Hot Tops, 24" Griddle, Convection Oven - Model 684-2-24THRC, and Salamander Broiler - Model ER680-60)



Specifications:

General —

Electric medium duty range - 60" W x 31¼" D x 37½" H (includes 6" legs). Front serviceable. Optional convection oven available. Stainless steel door, valve panel, and backguard, black powder coat epoxy sides and trim. Recommended for churches, schools, cafes and small restaurants. Specify with open elements or with options of hot top(s) and/or griddle.

Standard Features

- Stainless Steel Door
- Black Powder Coat Epoxy Sides and Trim
- Porcelainized Steel Oven Interior (Sides, Rear, Deck and Door Liner)
- Ten Open Elements, Switch Controlled
- Electric Heavy Duty Thermostats
- 6" Adjustable Legs (Brushed Chrome)
- Two Standard Ovens
- 7" Stainless Steel Backguard

Optional Features (Additional Charge)

- 12" Thermostatically Controlled Griddle, Add Suffix - 12th, Std. Right Side, Specify Left
- 24" Thermostatically Controlled Griddle, Add Suffix - 24th, Std. Right Side, Specify Left
- 36" Thermostatically Controlled Griddle, Add Suffix - 36th, Std. Right Side, Specify Left
- 12" Switch Controlled Hot Top, Add Suffix - 1, Std. Left Side, Specify Right
- Two 12" Switch Controlled Hot Tops, Add Suffix - 2, Std. Left Side, Specify Right
- Additional Oven Rack Per Oven
- Hi-Shelf w/Black Powder Coat Epoxy Backguard and Stainless Steel Plate Shelf
- Hi-Shelf w/Stainless Steel Backguard and Stainless Steel Plate Shelf
- Range Mount Salamander Broiler
- Continuous Clean Oven Interior, Add Suffix - CC
- Convection Oven Base w/Two Speed Fan, Add Suffix - RC for One Oven - Only Available on Left; or - RC2 for Two Ovens
- Stainless Steel Main Back for Rear Exposure
- 6" Adjustable Legs (Stainless Steel)
- Swivel Casters w/Front Brakes

**NOW STANDARD WITH
STAINLESS STEEL
FRONT AND SIDES**

Item #: _____

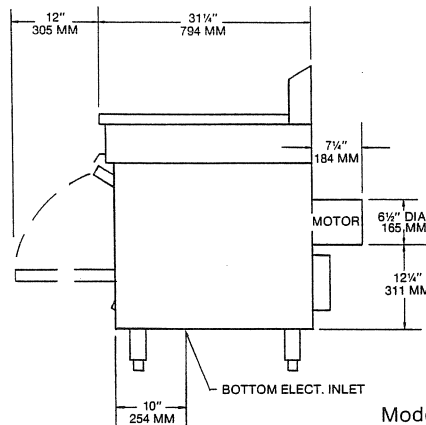
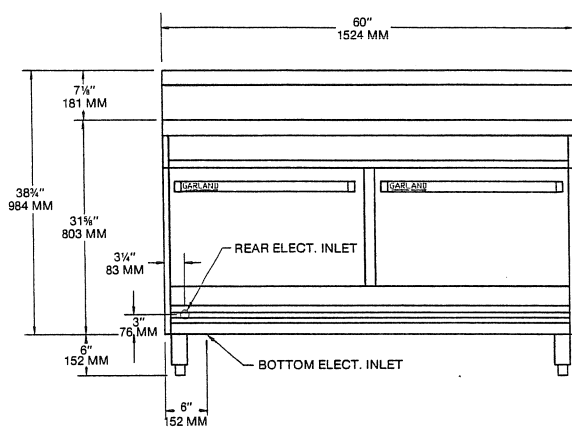
GARLAND®

Model # 684

Product Name: 60" Wide - 680 Series
Medium Duty - Electric Range

A **WELBILT** Company

Dimensions and Specifications



USABLE OVEN DIMENSIONS
STANDARD OVEN
 22 1/2" x 26 1/4" x 12 1/2"
 317.5 mm x 666.75 mm x 736.6 mm
RC Oven
 21 3/4" x 26 1/4" x 12 1/2"
 349.25 mm x 666.75 mm x 552.45 mm

SHIPPING WEIGHT

Model 684 650 LB
 Model 684RC 700 LB
 Model 684RC2 750 LB

* For Convection Oven Allow Additional 7 1/4" to Rear of Range for Installation.

Combustible wall clearances:
 Range without Salamander - 3" Sides - 1/2" Back

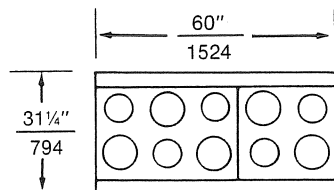
LOADING CHART

Range with Salamander - 6" Sides - 1/2" Back
 Range with hot top surface element - 6" Sides - 2" Back

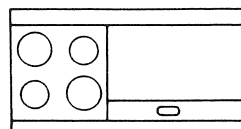
BASIC MODEL	COOKING TOP OPTION	OVEN	TOTAL KW	NOMINAL AMPERES PER LINE								
				1 PHASE		3 PHASE						
				208	240	208			240			
				X	Y	Z	X	Y	Z			
684	10 Open Elements or -12th, -24th, -36th	Std.	26.5	127	110	83	69	70	72	60	61	
		RC	27	130	113	80	74	70	70	64	61	
		RC2	27.5	132	115	74	80	79	64	69	68	
	-1 or -1-12th, -1-24th, -1-36th	Std.	27.2	131	113	86	69	74	75	60	64	
		RC	27.8	133	116	80	80	73	69	69	64	
		RC2	28.3	136	118	77	79	82	68	69	71	
	-2, -2-24th, -2-12th, -2-36th	Std.	28.1	135	117	90	69	78	78	60	68	
		RC	28.5	137	119	78	80	82	68	69	71	
		RC2	29.1	140	121	80	82	82	69	71	71	
with Salamander Broiler Add			7.0	34	28	34	—	34	29	—	29	

Available Wiring 240 Volt (220/240) or 208 Volt (197/219) Single or Three Phase. Specify Which is Required.

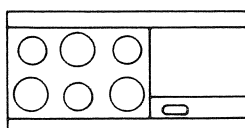
TYPICAL EXAMPLES OF TOP COMBINATIONS



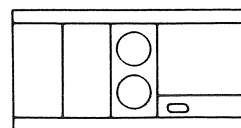
Model 684
 10 Open Elements
 2 Ovens



Model 684-36TH
 4 Open Elements
 36" (914mm) Griddle
 2 Ovens



Model 684-24TH
 6 Open Elements
 24" (610mm) Griddle
 2 Ovens



Model 684-2-24th
 2 Hot Top Sections
 2 Open Elements
 24" (610mm) Griddle
 2 Ovens

Continuous product improvement is a Garland policy.
 Therefore, specifications and designs are subject to change without notice.