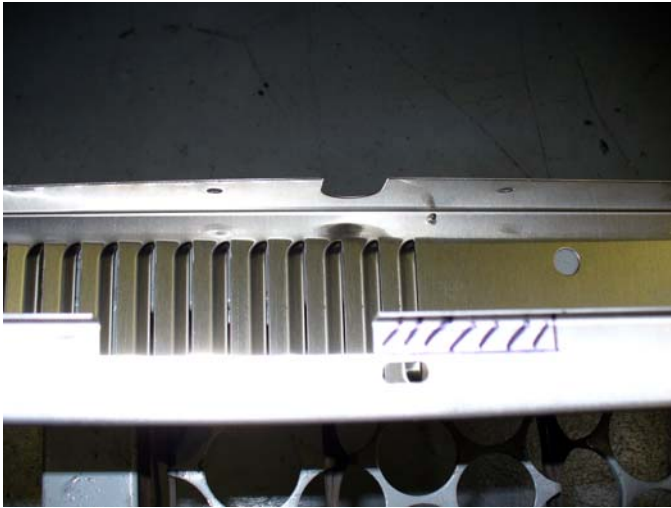


**INSTRUCTIONS FOR RETROFITTING SINGLE SPRING GPD60 OVENS
TO TWO SPRINGS
REQUIRES KIT # 4523593**

SPRING REMOVAL:



1. REMOVE LEFT AND RIGHT CORNER COLUMNS.
2. LOOSEN THE SPRING TENSION AND REMOVE SPRING ASSEMBLY FROM BOTH SIDES.
3. REMOVE NUT FROM EACH SIDE ADJUSTMENT PLATE.

MODIFICATIONS:

1. ADJUST SPRING HOOKS FLUSH TO THE BOTTOM OF THE HINGE SHAFT WITH THE OPENING FACING THE FRONT OF THE OVEN.
2. OPEN (2) HOLES IN EACH SIDE ADJUSTMENT PLATES TO $25/64$ ". IT MAY BE NECESSARY TO REMOVE THE LEFT SIDE ADJUSTMENT PLATE IF THERE IS LIMITED CLEARANCE BETWEEN THE OVEN AND ADJACENT WALL.
3. MODIFY LEFT CORNER COLUMN AND LEFT MAIN SIDE. THE UPPER NOTCHES SHOULD BE EXTENDED BY 2" AS SHOWN. **REMOVE ALL SHARP EDGES.**



SPRING INSTALLATION:

1. INSTALL NUT INSERTS INTO THE SIDE ADJUSTMENT PLATES AND SECURE USING PROPER TOOL.
2. ASSEMBLE SPRINGS, PLATES, CHAIN, AND PINS AS SHOWN.
3. ASSEMBLE OFFSET BRACKET ASSEMBLY AS SHOWN.
4. INSTALL OFFSET BRACKET ASSEMBLY AND SPRING ASSEMBLY.
5. ADJUST TENSION TO ALLOW DOOR TO BALANCE AT APPROXIMATELY 70 DEGREES FROM HORIZONTAL. **MAXIMUM SPRING EXTENSION NOT TO EXCEED 2-1/2"**.
6. REINSTALL COVERS.



RECOMMENDED TOOLS:

3/8" RIGHT ANGLE DRILL

25/64" SHORT DRILL BIT

7/16" WRENCH

9/16" WRENCH

PHILLIPS HEAD SCREWDRIVER

VISEGRIPS

PLIERS

NUT INSERTION TOOL (MCMASTER 96349A305)

SHEET METAL SNIPS

FLASHLIGHT

DIE GRINDER OR METAL FILE