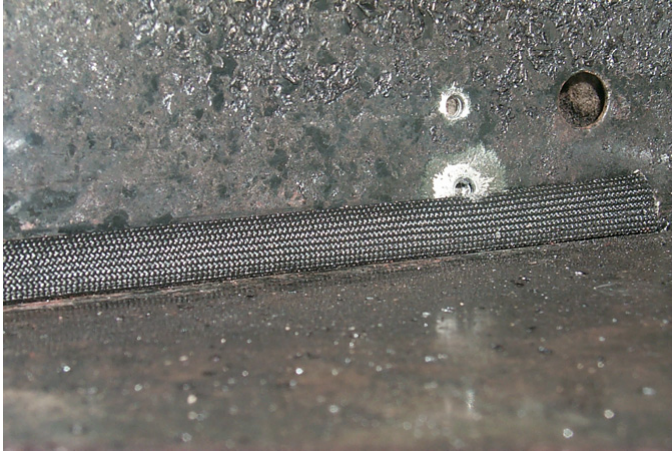


## RC CAVITY PATCH INSTALLATION

1. Remove oven racks and rack guides.
2. Remove air baffle.
3. Place insulating strip across bottom rear seam on center



4. Place S/S part over insulating strip and drill 4 holes 9/64" diameter. Attach with 4 sheet metal screws making sure part is tight to bottom and back. Note: insure insulating strip remains against rear seam.



5. Re-place air baffle and rack guides and racks.
6. Test unit to see if this solved the problem.

### Parts List

QTY 1 of 4520970 Rear Seal  
QTY 1 of 4520979 Installation Instructions  
QTY 1 of 4520980 Thermoflex Insulating Sleeve 26" long  
QTY 4 of F60 #10x5/8 Sheet Metal Screw