



BULLETIN # B-110-2001

From: Parts and Service Division
To: All Authorized Service Agencies

Date: September 28, 2001

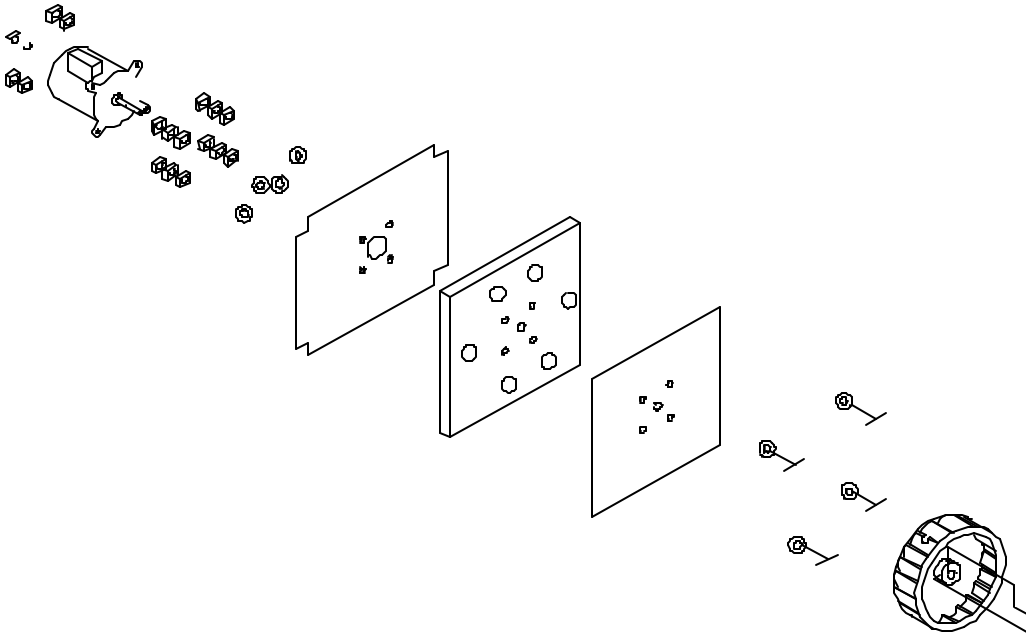
SUBJECT: Full Size Garland & US Range Convection ovens

When a replacement convection oven motor is required, a complete motor assembly should be ordered.

The assembly will :

- A. Reduce labour costs
- B. Reduce the likelihood of the original blower wheel being out of balance due to removal or debris build up in the original blower wheel.

The complete motor assembly includes the motor, motor mounting plate, motor plate inner, insulation, fasteners and blower wheel.



GARLAND MODEL #	US RANGE MODEL #	Voltage	Speed	<u>Horsepower</u>	Motor Assy. CK #	Motor ONLY
MCOGS MCOGD	SGE100 SGM100 P1-G-100	115V	2 SPD	¾ hp	CK1003090	1686711
MCOGS MCOGD	SGE100 SGM100	208V /240V	2 SPD	¾ hp	CK1003091	1686712
MCOGS MCOGD	SGE100 SGM100 P1-G-100	115V /230V	1 SPD	½ hp	CK1003092	1686703
MCOES MCOED	SEE100 SEM100	208V /240V	2 SPD	¾ hp	CK1003091	1686712
MCOES MCOED	SEE100 SEM100	115V /230V	1 SPD	½ hp	CK1003092	1686703

GARLAND MODEL #	US RANGE MODEL #	Voltage	Speed	Horsepower	Motor Assy. CK #	Motor ONLY
ICOG ECO G	CG100	115V / 230V	1 SPD	½ hp	CK1003099	1686703
ICOG ECO G	CG100 SDG	115V	2 SPD	¾ hp	CK1003095	1686711
ICOG TIM HORTON's 'spritzer'		115V	2 SPD	¾ hp	CK00-011	1686711
ICOE ECO E	CE100	208V / 240V	2 SPD	¾ hp	CK1003094	1686712